



BIREMA d.o.o.

investitor: "Birema d.o.o." Nova Pazova

STAMBENA ZGRADA Po+P+4+Pk

Novi Banovci, ul. Svetosavska 2

k.p. 2390 / 141

projektant: TIM INŽENJERING SISTEM

 tim inženjering sistem doo
biro za projektovanje i inženjering

STAMBENA ZGRADA Po+P+4+Pk

Novi Banovci, ul. Svetosavska 2

kp 2390 / 141

etaža: **podrum**

garaže

etaža: **prizemlje**

| | |
|-------------------|-----------------------|
| lokal br. 01..... | 140.81 m ² |
| lokal br. 02..... | 65.03 m ² |
| lokal br. 03..... | 43.69 m ² |
| lokal br. 04..... | 15.86 m ² |
| lokal br. 05..... | 46.73 m ² |
| lokal br. 06..... | 18.55m ² |
| lokal br. 07..... | 54.02m ² |

| | |
|------------------|---------------------|
| stan br. 01..... | 55.49m ² |
| stan br. 02..... | 51.31m ² |

etaža: **I sprat**

| | |
|------------------|----------------------|
| stan br. 03..... | 30.35 m ² |
| stan br. 04..... | 63.16 m ² |
| stan br. 05..... | 38.24 m ² |
| stan br. 06..... | 75.29 m ² |
| stan br. 07..... | 55.00 m ² |
| stan br. 08..... | 47.15 m ² |
| stan br. 09..... | 46.68 m ² |
| stan br. 10..... | 43.31 m ² |
| stan br. 11..... | 40.13 m ² |
| stan br. 12..... | 43.10 m ² |
| stan br. 13..... | 41.76 m ² |



STAMBENA ZGRADA Po+P+4+Pk

Novi Banovci, ul. Svetosavska 2

kp 2390 / 141

etaža: II sprat

| | |
|------------------|----------------------|
| stan br. 14..... | 30.35 m ² |
| stan br. 15..... | 63.16 m ² |
| stan br. 16..... | 38.24 m ² |
| stan br. 17..... | 75.29 m ² |
| stan br. 18..... | 55.00 m ² |
| stan br. 19..... | 47.15 m ² |
| stan br. 20..... | 46.68 m ² |
| stan br. 21..... | 43.31 m ² |
| stan br. 22..... | 40.13 m ² |
| stan br. 23..... | 43.10 m ² |
| stan br. 24..... | 41.76 m ² |

etaža: III sprat

| | |
|------------------|----------------------|
| stan br. 25..... | 30.23 m ² |
| stan br. 26..... | 83.13 m ² |
| stan br. 27..... | 97.48 m ² |
| stan br. 28..... | 55.82 m ² |
| stan br. 29..... | 47.32 m ² |
| stan br. 30..... | 46.52 m ² |
| stan br. 31..... | 43.34 m ² |
| stan br. 32..... | 40.15 m ² |
| stan br. 33..... | 43.17 m ² |
| stan br. 34..... | 41.81 m ² |



STAMBENA ZGRADA Po+P+4+Pk

Novi Banovci, ul. Svetosavska 2

kp 2390 / 141

etaža: **IV sprat**

| | |
|------------------|----------------------|
| stan br. 35..... | 30.23 m ² |
| stan br. 36..... | 83.13 m ² |
| stan br. 37..... | 97.48 m ² |
| stan br. 38..... | 55.82 m ² |
| stan br. 39..... | 47.32 m ² |
| stan br. 40..... | 46.52 m ² |
| stan br. 41..... | 43.34 m ² |
| stan br. 42..... | 40.15 m ² |
| stan br. 43..... | 43.17 m ² |
| stan br. 44..... | 41.81 m ² |

etaža: **potkrovlje**

| | |
|------------------|----------------------|
| stan br. 45..... | 27.72 m ² |
| stan br. 46..... | 70.88 m ² |
| stan br. 47..... | 71.52 m ² |
| stan br. 48..... | 39.60 m ² |
| stan br. 49..... | 38.59 m ² |
| stan br. 50..... | 38.86 m ² |
| stan br. 51..... | 63.47 m ² |
| stan br. 52..... | 37.28 m ² |
| stan br. 53..... | 33.96 m ² |



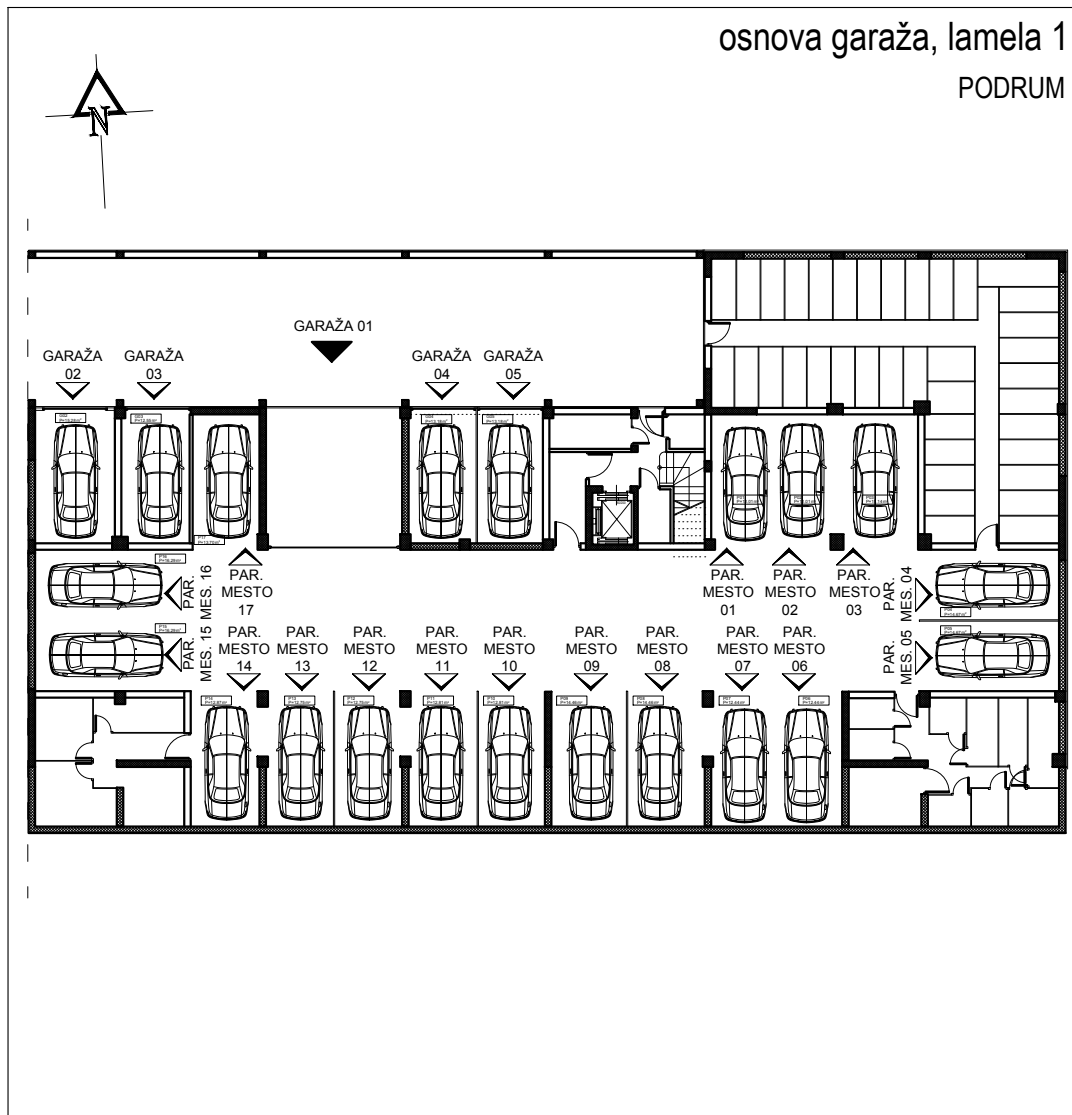
osnova garaža, lamela 1

PODRUM

STAMBENA ZGRADA Su+P+4+Pk

Novi Banovci, ul. Svetosavska 2

kp 2390 / 141



| P O D R U M | | |
|-----------------|---------------|-----------------------------|
| G A R A Ž A 0 1 | | |
| br. | prostorija | površina/m ² |
| PARKING MESTA | | |
| 1 | PAR. MESTO | 12.01 |
| 2 | PAR. MESTO | 12.01 |
| 3 | PAR. MESTO | 15.14 |
| 4 | PAR. MESTO | 14.67 |
| 5 | PAR. MESTO | 14.67 |
| 6 | PAR. MESTO | 12.44 |
| 7 | PAR. MESTO | 12.44 |
| 8 | PAR. MESTO | 14.46 |
| 9 | PAR. MESTO | 14.46 |
| 10 | PAR. MESTO | 12.81 |
| 11 | PAR. MESTO | 12.81 |
| 12 | PAR. MESTO | 12.75 |
| 13 | PAR. MESTO | 12.75 |
| 14 | PAR. MESTO | 12.87 |
| 15 | PAR. MESTO | 16.29 |
| 16 | PAR. MESTO | 16.29 |
| 17 | PAR. MESTO | 13.70 |
| GARAŽE | | |
| 18 | GARAŽA 02 | 15.28 |
| 19 | GARAŽA 03 | 12.55 |
| 20 | GARAŽA 04 | 13.18 |
| 21 | GARAŽA 05 | 13.18 |
| | UKUPNO | 286.76 m² |
| | -3% | 278.16 m² |

BIREMA

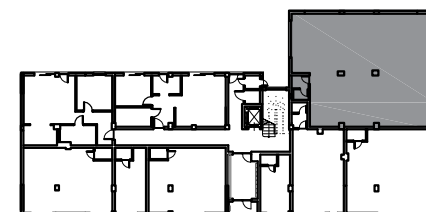
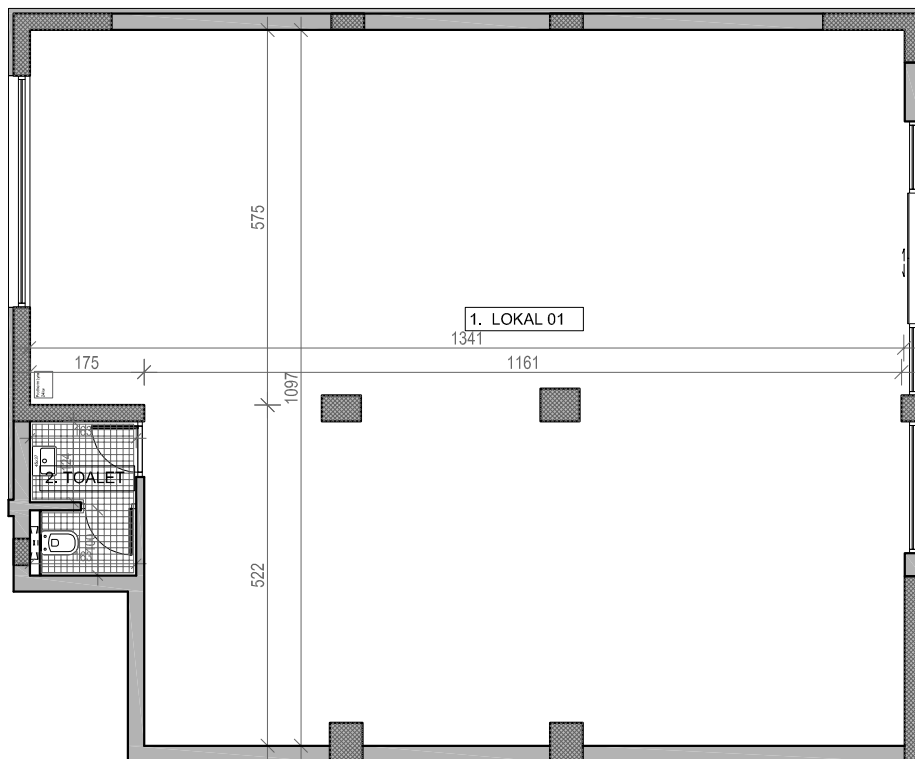
osnova lokala br. 01
PRIZEMLJE / **P=140.81 m²**

STAMBENA ZGRADA Su+P+4+Pk

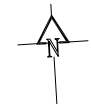
Novi Banovci, ul. Svetosavska 2
kp 2390 / 141



| PRIZEMLJE LOKAL BR. 01 | | |
|---------------------------|------------|-----------------------------|
| br. | prostorija | površina/m ² |
| 1 | LOKAL | 137.06 |
| 2 | TOALET | 3.75 |
| UKUPNO | | 140.81 m² |
| | | -3% |
| | | 136.59 m² |



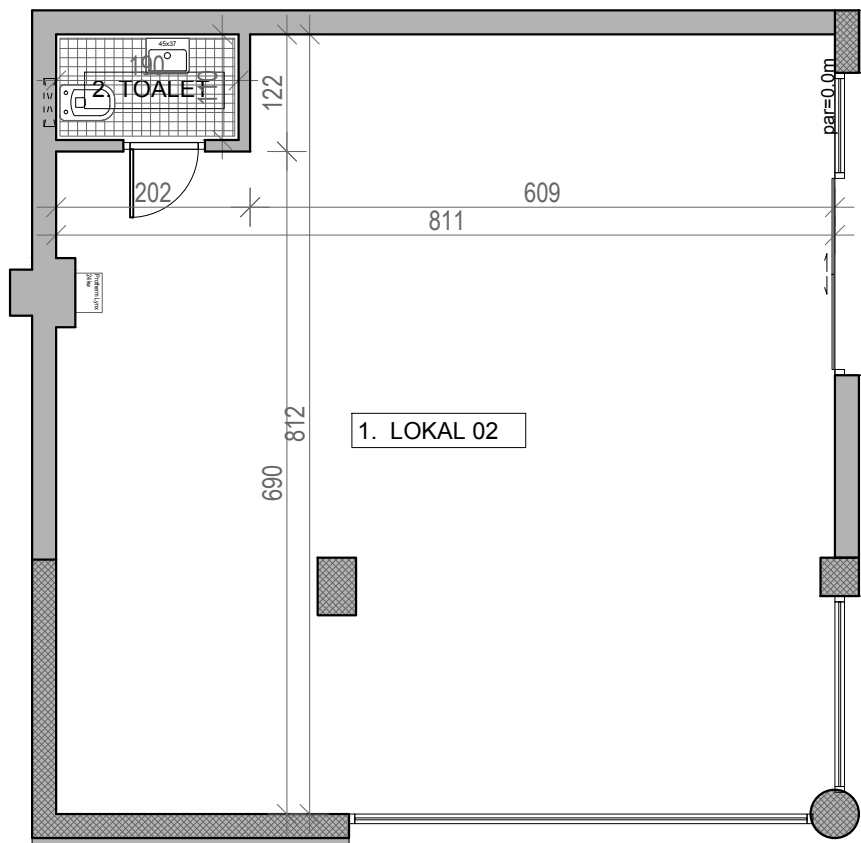
ULICA SVETOSAVSKA



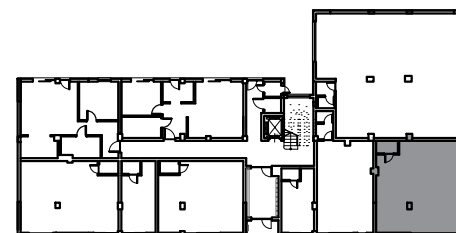
osnova lokala br. 02
PRIZEMLJE / **P=65.03 m²**

STAMBENA ZGRADA Su+P+4+Pk

Novi Banovci, ul. Svetosavska 2
kp 2390 / 141



| PRIZEMLJE LOKAL BR. 02 | | |
|---------------------------|------------|----------------------------|
| br. | prostorija | površina/m ² |
| 1 | LOKAL | 62.94 |
| 2 | TOALET | 2.09 |
| UKUPNO | | 65.03 m² |
| -3% | | 63.08 m² |



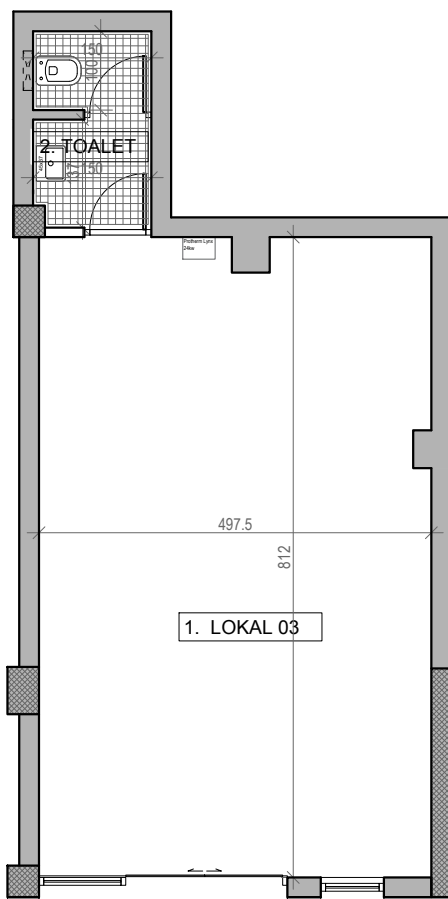
ULICA SVETOSAVSKA



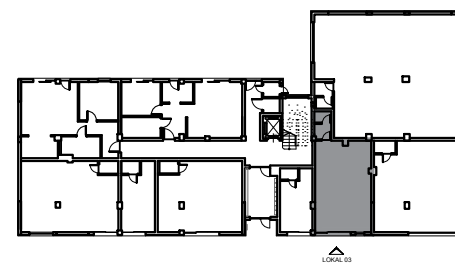
osnova lokala br. 03
PRIZEMLJE / **P=43.69 m²**

STAMBENA ZGRADA Su+P+4+Pk

Novi Banovci, ul. Svetosavska 2
kp 2390 / 141

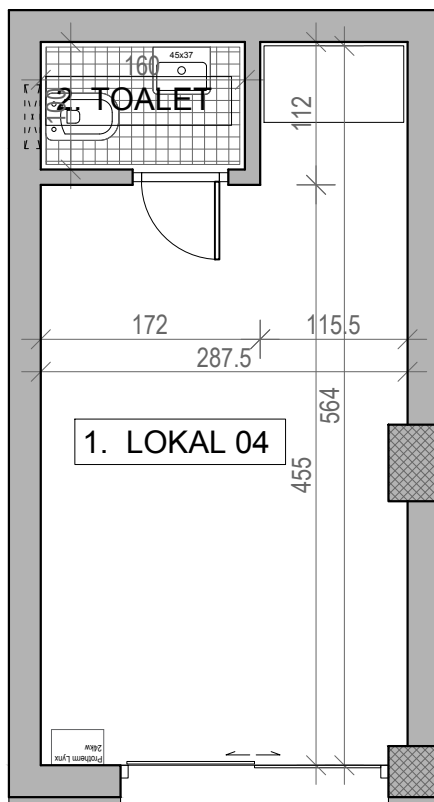


| PRIZEMLJE | | |
|---------------|------------|----------------------------|
| LOKAL BR. 03 | | |
| br. | prostorija | površina/m ² |
| 1 | LOKAL | 40.07 |
| 2 | TOALET | 3.62 |
| UKUPNO | | 43.69 m² |
| -3% | | 42.38 m² |



ULICA SVETOSAVSKA

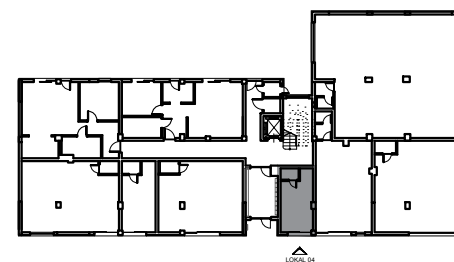
osnova lokala br. 04
PRIZEMLJE / **P=15.86 m²**



STAMBENA ZGRADA Su+P+4+Pk

Novi Banovci, ul. Svetosavska 2
kp 2390 / 141

| PRIZEMLJE | | |
|---------------|------------|----------------------------|
| LOKAL BR. 04 | | |
| br. | prostorija | površina/m ² |
| 1 | LOKAL | 14.26 |
| 2 | TOALET | 1.60 |
| UKUPNO | | 15.86 m² |
| | | -3% |
| | | 15.38 m² |



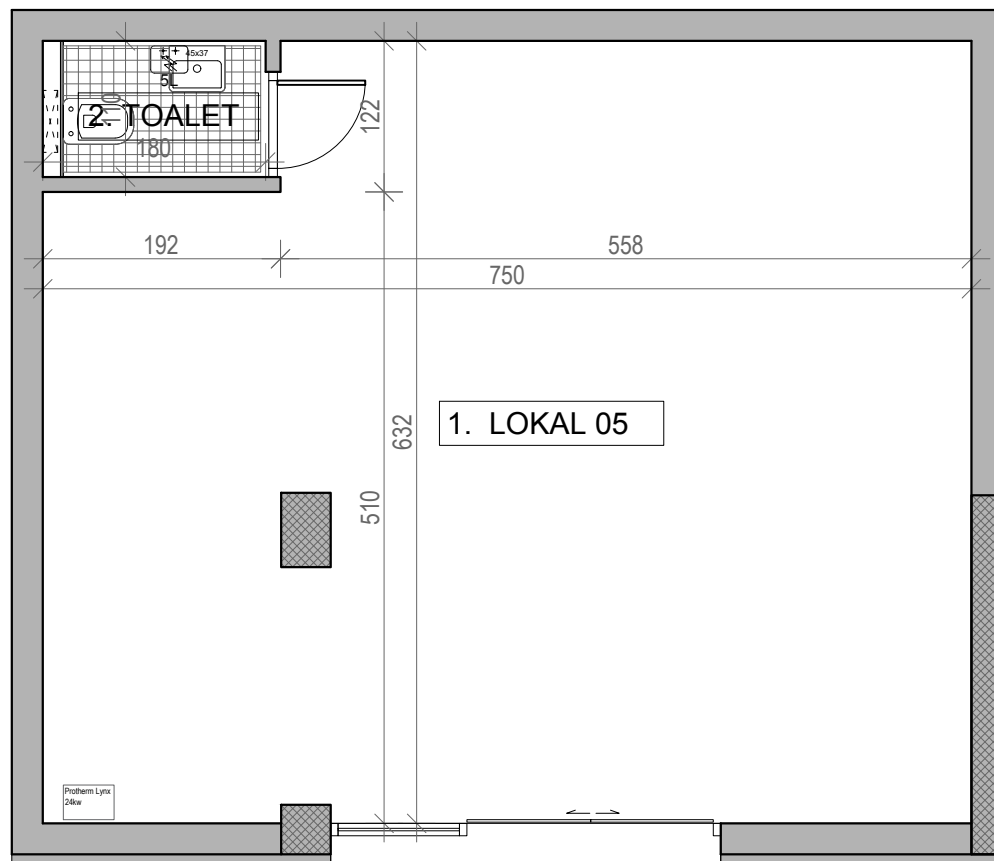
ULICA SVETOSAVSKA



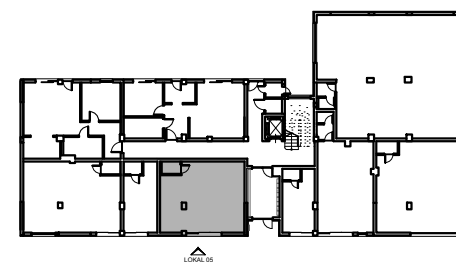
osnova lokala br. 05
PRIZEMLJE / **P=46.73 m²**

STAMBENA ZGRADA Su+P+4+Pk

Novi Banovci, ul. Svetosavska 2
kp 2390 / 141



| PRIZEMLJE | | |
|---------------|------------|----------------------------|
| LOKAL BR. 05 | | |
| br. | prostorija | površina/m ² |
| 1 | LOKAL | 44.75 |
| 2 | TOALET | 1.98 |
| UKUPNO | | 46.73 m² |
| -3% | | 45.33 m² |



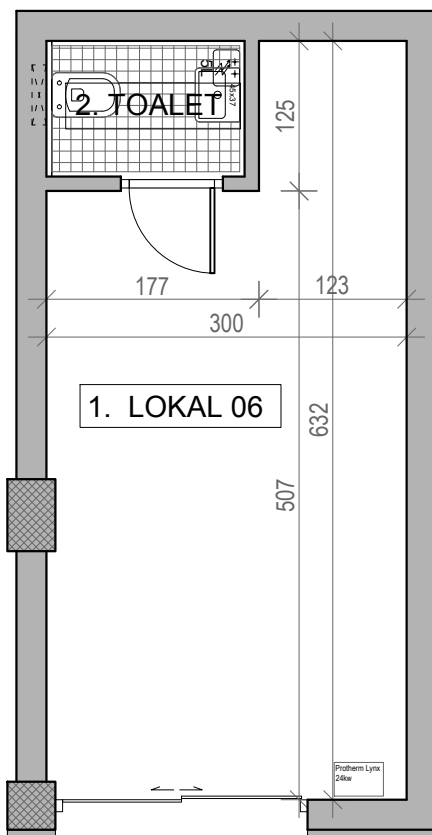
ULICA SVETOSAVSKA



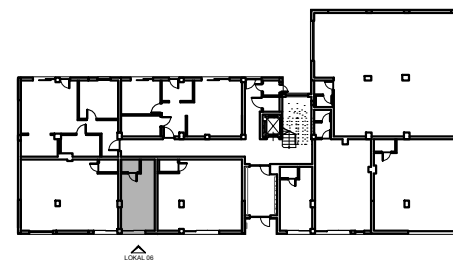
osnova lokala br. 06
PRIZEMLJE / **P=18.55 m²**

STAMBENA ZGRADA Su+P+4+Pk

Novi Banovci, ul. Svetosavska 2
kp 2390 / 141



| PRIZEMLJE LOKAL BR. 06 | | |
|---------------------------|------------|----------------------------|
| br. | prostorija | površina/m ² |
| 1 | LOKAL | 16.69 |
| 2 | TOALET | 1.86 |
| UKUPNO | | 18.55 m² |
| | | -3% |
| | | 17.99 m² |



ULICA SVETOSAVSKA

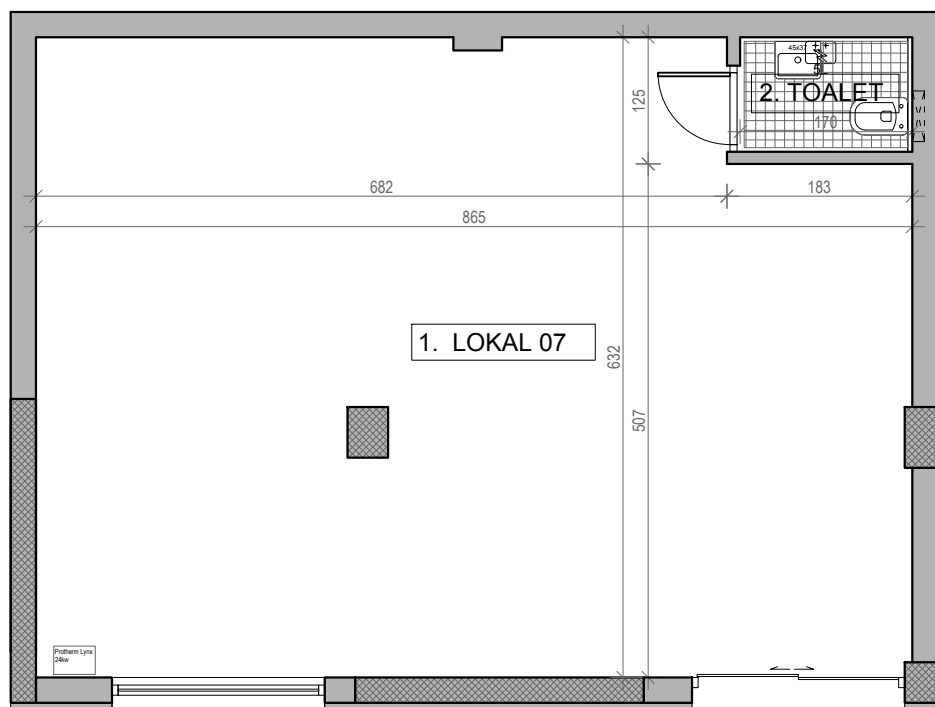


osnova lokala. 07
PRIZEMLJE / **P=54.02 m²**

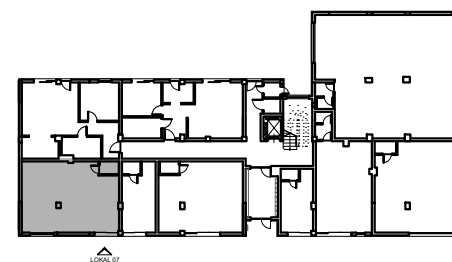
STAMBENA ZGRADA Su+P+4+Pk

Novi Banovci, ul. Svetosavska 2

kp 2390 / 141



| PRIZEMLJE | | |
|---------------|------------|----------------------------|
| LOKAL BR. 07 | | |
| br. | prostorija | površina/m ² |
| 1 | LOKAL | 52.10 |
| 2 | TOALET | 1.92 |
| UKUPNO | | 54.02 m² |
| | | -3% |
| | | 52.40 m² |

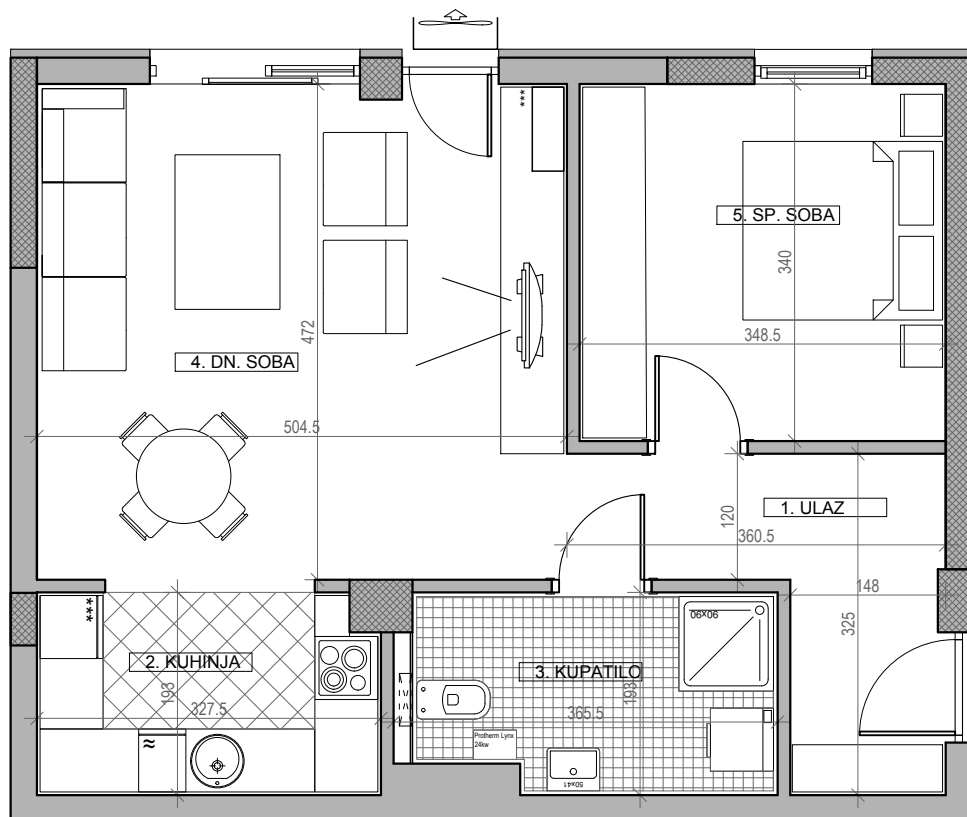


ULICA SVETOSAVSKA

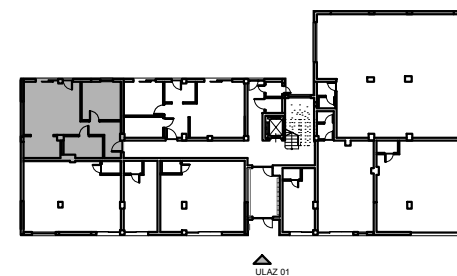
osnova stana br. 01, ulaz broj 1
PRIZEMLJE / **P=55.49 m²**

STAMBENA ZGRADA Su+P+4+Pk

Novi Banovci, ul. Svetosavska 2
kp 2390 / 141



| PRIZEMLJE | | |
|---------------|------------|----------------------------|
| STAN BR. 01 | | |
| br. | prostorija | površina/m ² |
| 1 | ULAZ | 7.34 |
| 2 | KUHINJA | 6.11 |
| 3 | KUPATILO | 6.40 |
| 4 | DN. SOBA | 23.74 |
| 5 | SP. SOBA | 11.90 |
| UKUPNO | | 55.49 m² |
| -3% | | 53.83 m² |



ULICA SVETOSAVSKA

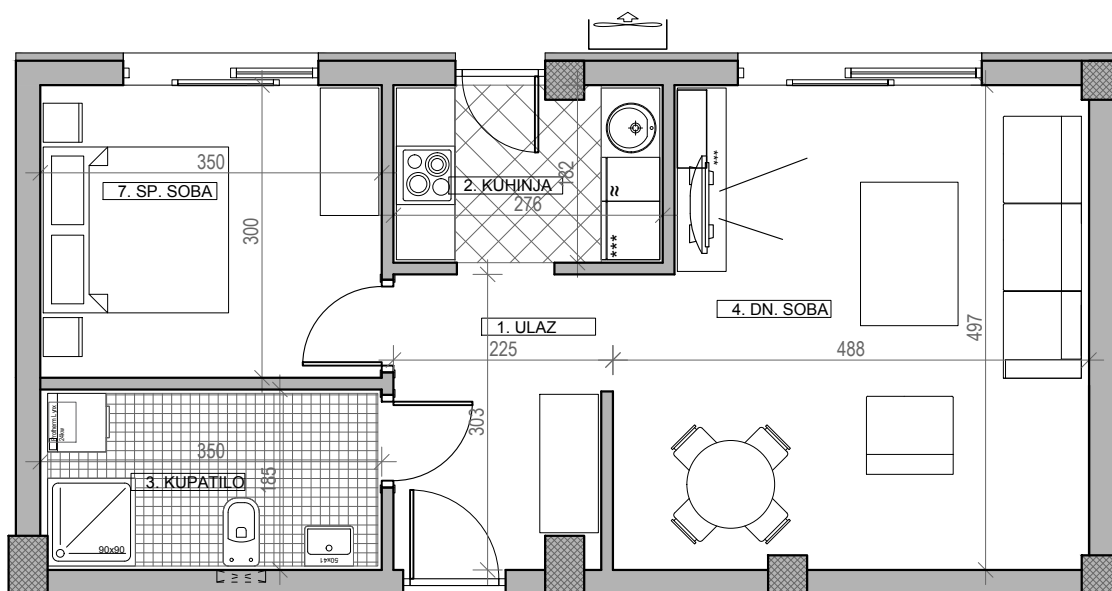


osnova stana br. 02, ulaz broj 1
PRIZEMLJE / **P=51.31 m²**

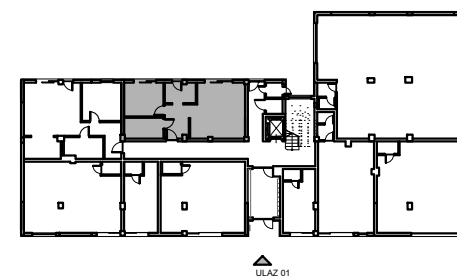
STAMBENA ZGRADA Su+P+4+Pk

Novi Banovci, ul. Svetosavska 2

kp 2390 / 141



| PRIZEMLJE STAN BR. 02 | | |
|--------------------------|------------|----------------------------|
| br. | prostoriya | površina/m ² |
| 1 | ULAZ | 6.45 |
| 2 | KUHINJA | 5.02 |
| 3 | KUPATILO | 6.31 |
| 4 | DN. SOBA | 23.03 |
| 5 | SP. SOBA | 10.50 |
| UKUPNO | | 51.31 m² |
| | | -3% |
| | | 49.77 m² |

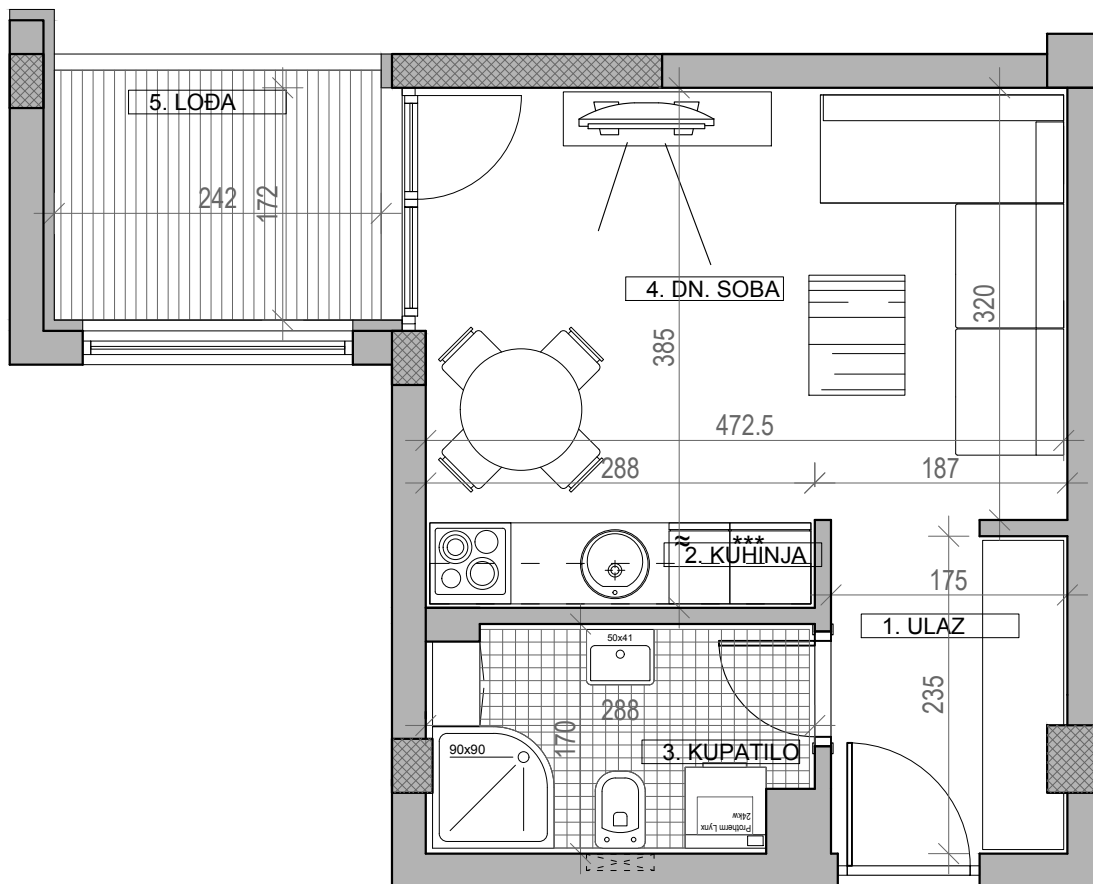


ULICA SVETOSAVSKA



osnova stana br. 03, ulaz broj 1

I SPRAT / P=30.35 m²

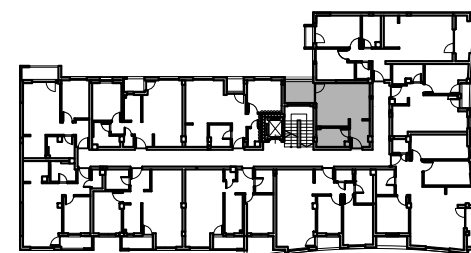


STAMBENA ZGRADA Su+P+4+Pk

Novi Banovci, ul. Svetosavska 2

kp 2390 / 141

| I SPRAT | | |
|---------------|------------|----------------------------|
| STAN BR. 03 | | |
| br. | prostorija | površina/m ² |
| 1 | ULAZ | 4.04 |
| 2 | KUHINJA | 1.84 |
| 3 | KUPATILO | 4.67 |
| 4 | DN. SOBA | 15.32 |
| 5 | LOĐA | 4.48 |
| UKUPNO | | 30.35 m² |
| -3% | | 29.44 m² |



ULICA SVETOSAVSKA

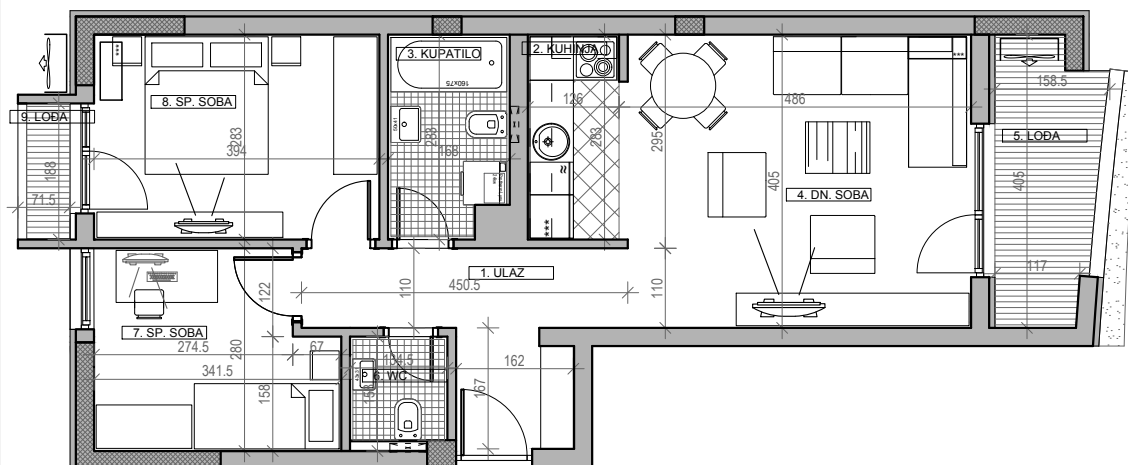


osnova stana br. 04, ulaz broj 1
I SPRAT / **P=63.16 m²**

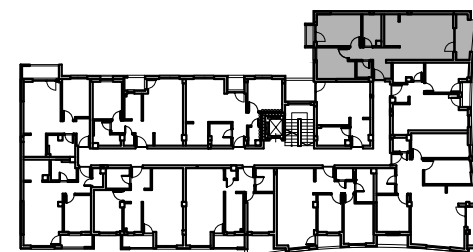
STAMBENA ZGRADA Su+P+4+Pk

Novi Banovci, ul. Svetosavska 2

kp 2390 / 141



| I SPRAT | | |
|---------------|------------|----------------------------|
| STAN BR. 04 | | |
| br. | prostorija | površina/m ² |
| 1 | ULAZ | 7.54 |
| 2 | KUHINJA | 3.57 |
| 3 | KUPATILO | 4.52 |
| 4 | DN. SOBA | 19.20 |
| 5 | LOĐA | 5.39 |
| 6 | WC | 1.92 |
| 7 | SP. SOBA | 8.74 |
| 8 | SP. SOBA | 11.15 |
| 9 | LOĐA | 1.13 |
| UKUPNO | | 63.16 m² |
| | | -3% |
| | | 61.27 m² |



ULICA SVETOSAVSKA



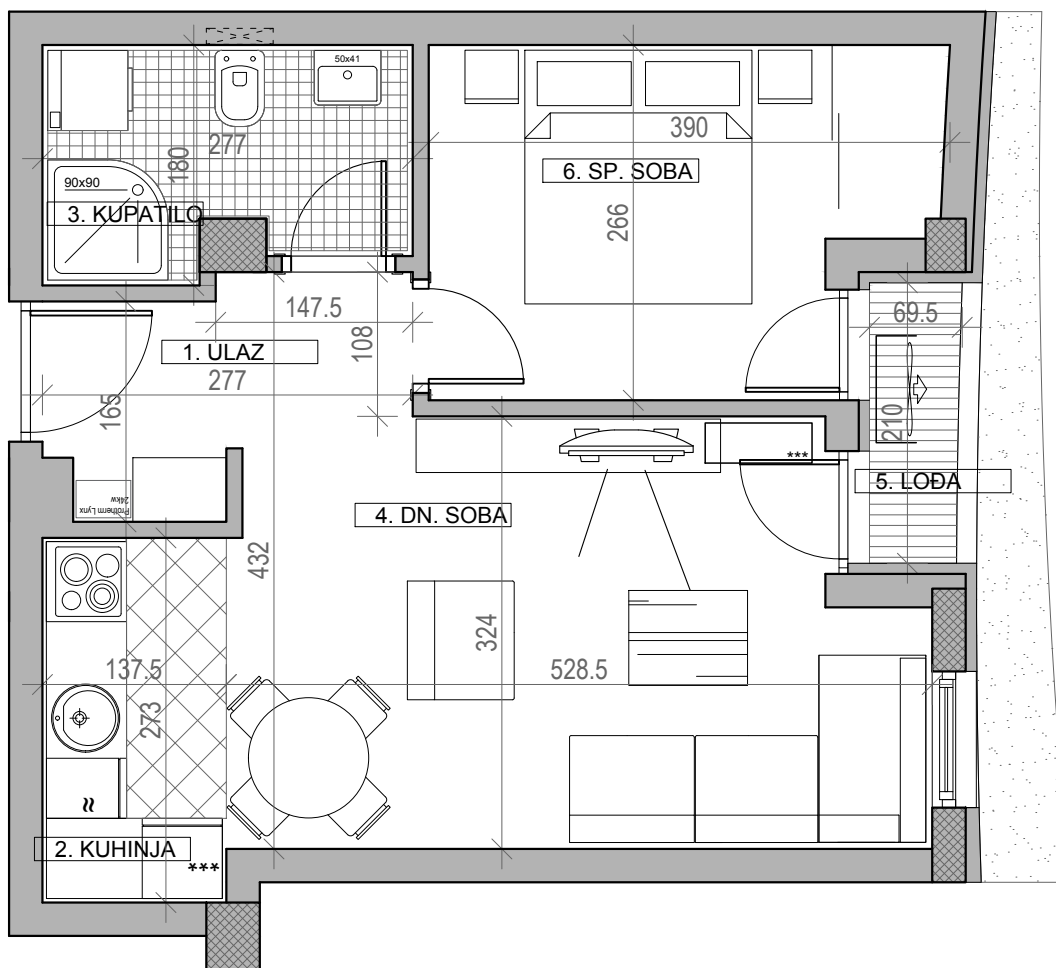
osnova stana br. 05, ulaz broj 1

I SPRAT / **P=38.24 m²**

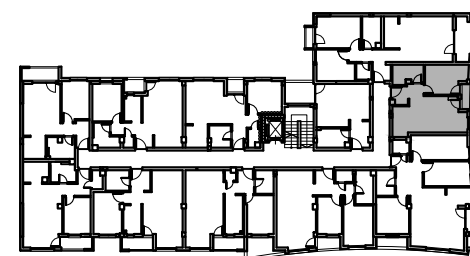
STAMBENA ZGRADA Su+P+4+Pk

Novi Banovci, ul. Svetosavska 2

kp 2390 / 141



| I SPRAT | | |
|---------------|------------|----------------------------|
| STAN BR. 05 | | |
| br. | prostorija | površina/m ² |
| 1 | ULAZ | 3.81 |
| 2 | KUHINJA | 3.76 |
| 3 | KUPATILO | 4.50 |
| 4 | DN. SOBA | 15.58 |
| 5 | LOĐA | 1.41 |
| 6 | SP. SOBA | 9.18 |
| UKUPNO | | 38.24 m² |
| | | -3% |
| | | 37.09 m² |

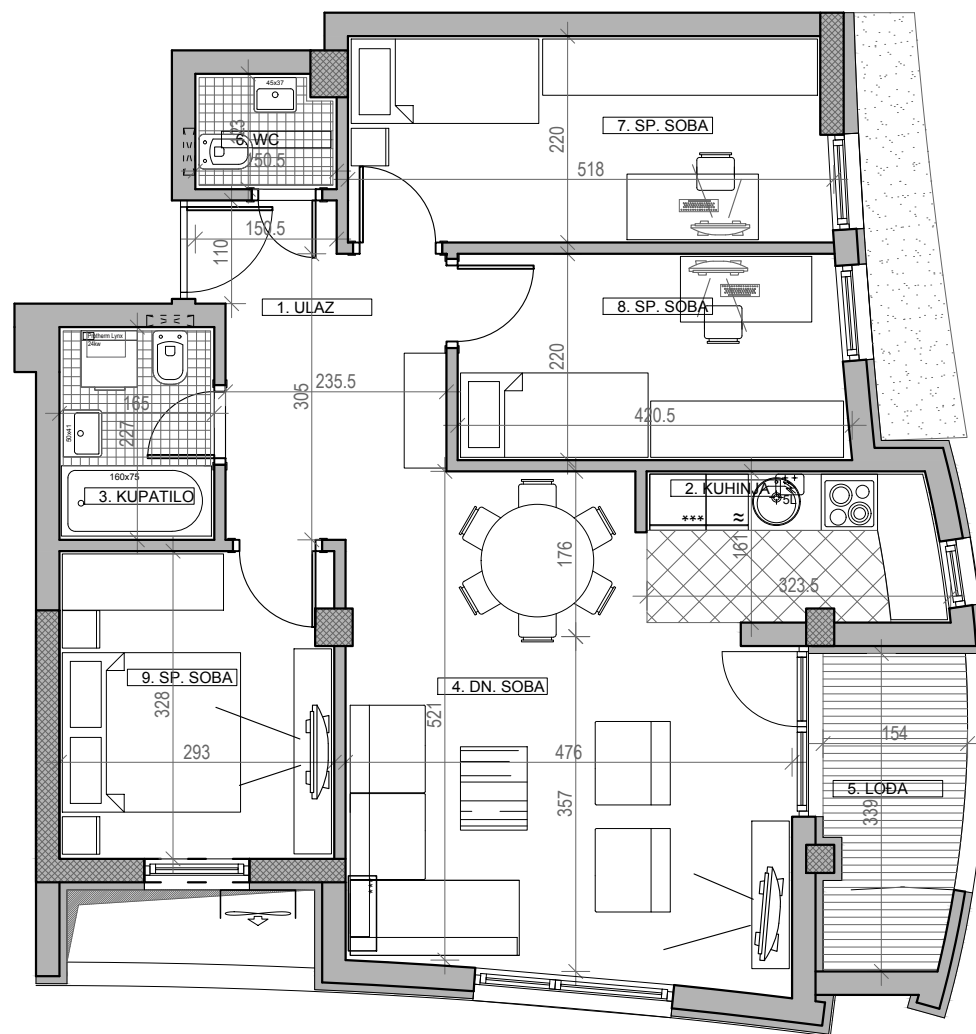


ULICA SVETOSAVSKA



osnova stana br. 06, ulaz broj 1

I SPRAT / **P=75.29 m²**



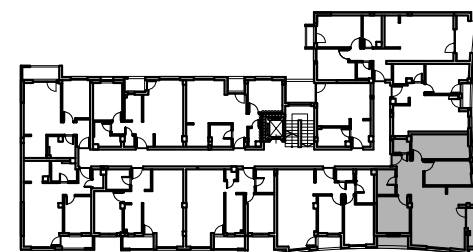
STAMBENA ZGRADA Su+P+4+Pk

Novi Banovci, ul. Svetosavska 2

kp 2390 / 141



| I SPRAT | | |
|---------------|------------|----------------------------|
| STAN BR. 06 | | |
| br. | prostorija | površina/m ² |
| 1 | ULAZ | 7.41 |
| 2 | KUHINJA | 4.94 |
| 3 | KUPATILO | 3.74 |
| 4 | DN. SOBA | 22.92 |
| 5 | LOĐA | 4.73 |
| 6 | WC | 1.78 |
| 7 | SP. SOBA | 11.20 |
| 8 | SP. SOBA | 9.04 |
| 9 | SP. SOBA | 9.53 |
| UKUPNO | | 75.29 m² |
| -3% | | 73.03 m² |



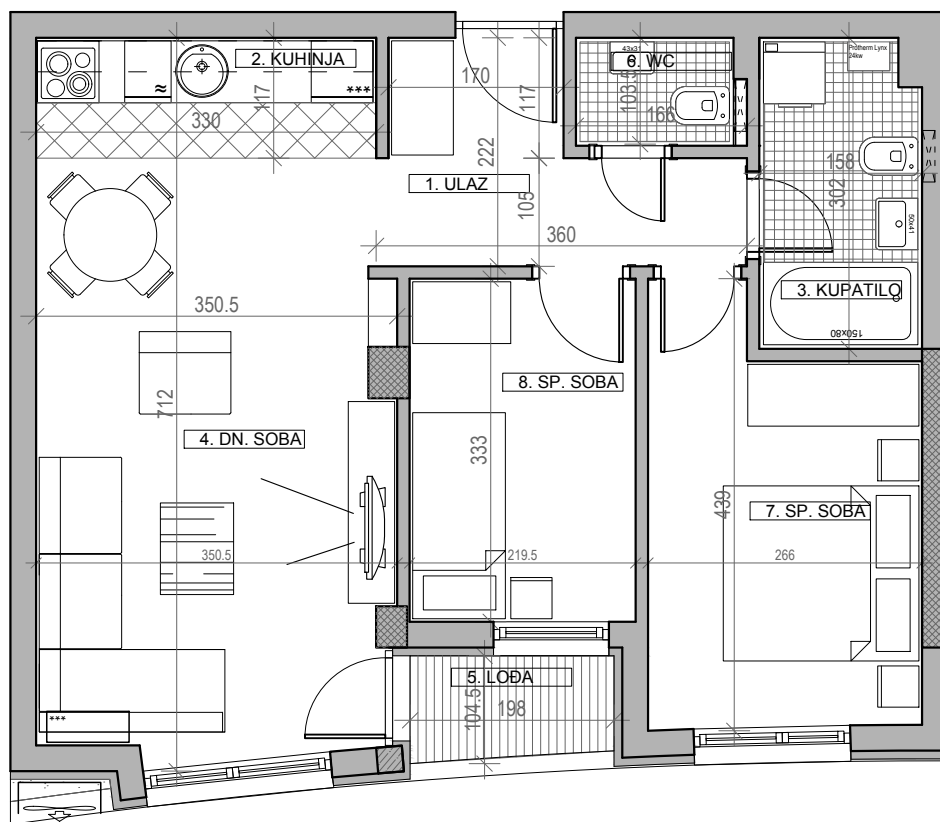
ULICA SVETOSAVSKA



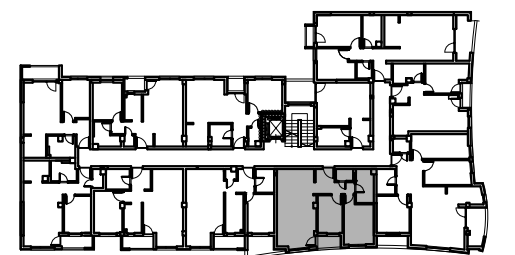
osnova stana br. 07, ulaz broj 1
I SPRAT / **P=55.00 m²**

STAMBENA ZGRADA Su+P+4+Pk

Novi Banovci, ul. Svetosavska 2
kp 2390 / 141



| I SPRAT | | |
|---------------|------------|----------------------------|
| STAN BR. 07 | | |
| br. | prostorija | površina/m ² |
| 1 | ULAZ | 5.64 |
| 2 | KUHINJA | 3.86 |
| 3 | KUPATILO | 4.66 |
| 4 | DN. SOBA | 19.74 |
| 5 | LOĐA | 1.95 |
| 6 | WC | 1.60 |
| 7 | SP. SOBA | 10.24 |
| 8 | SP. SOBA | 7.31 |
| UKUPNO | | 55.00 m² |
| -3% | | 53.35 m² |



ULICA SVETOSAVSKA



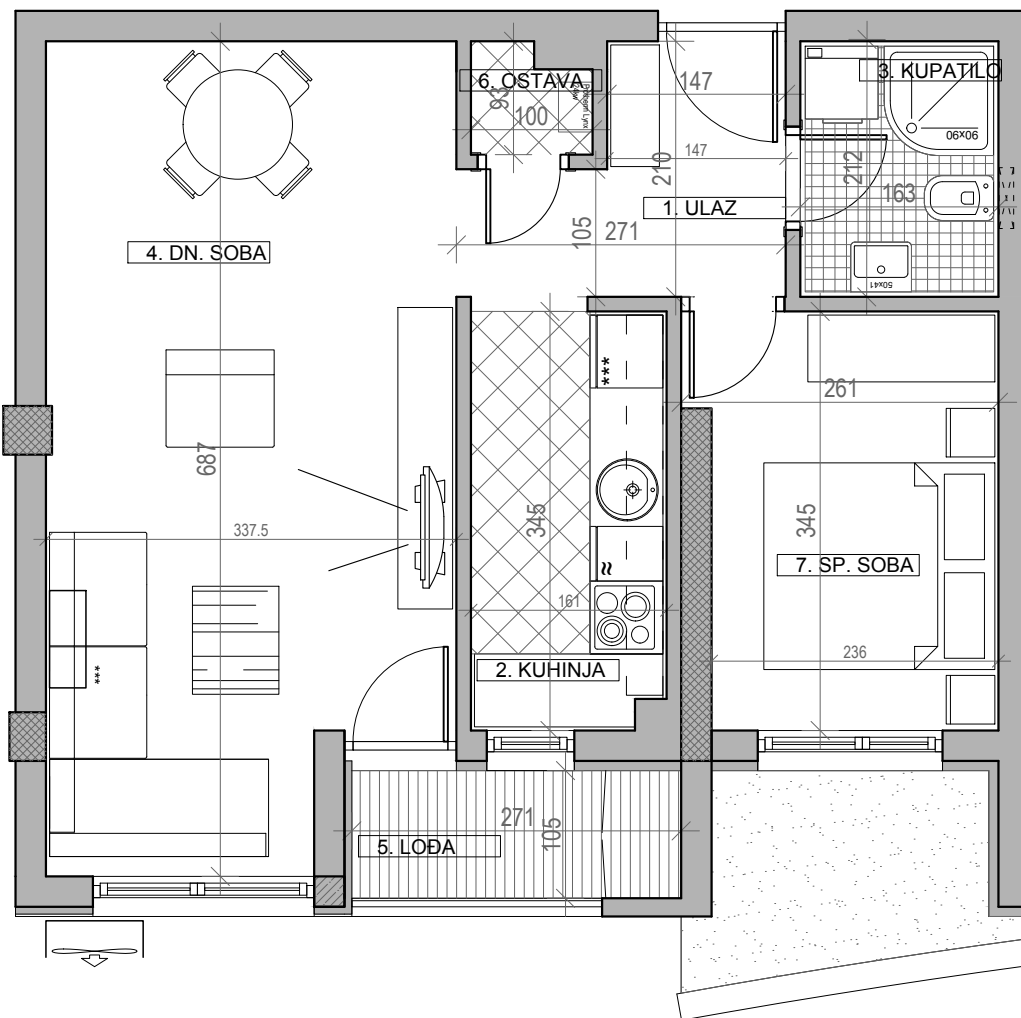
osnova stana br. 08, ulaz broj 1

I SPRAT / **P=47.15 m²**

STAMBENA ZGRADA Su+P+4+Pk

Novi Banovci, ul. Svetosavska 2

kp 2390 / 141



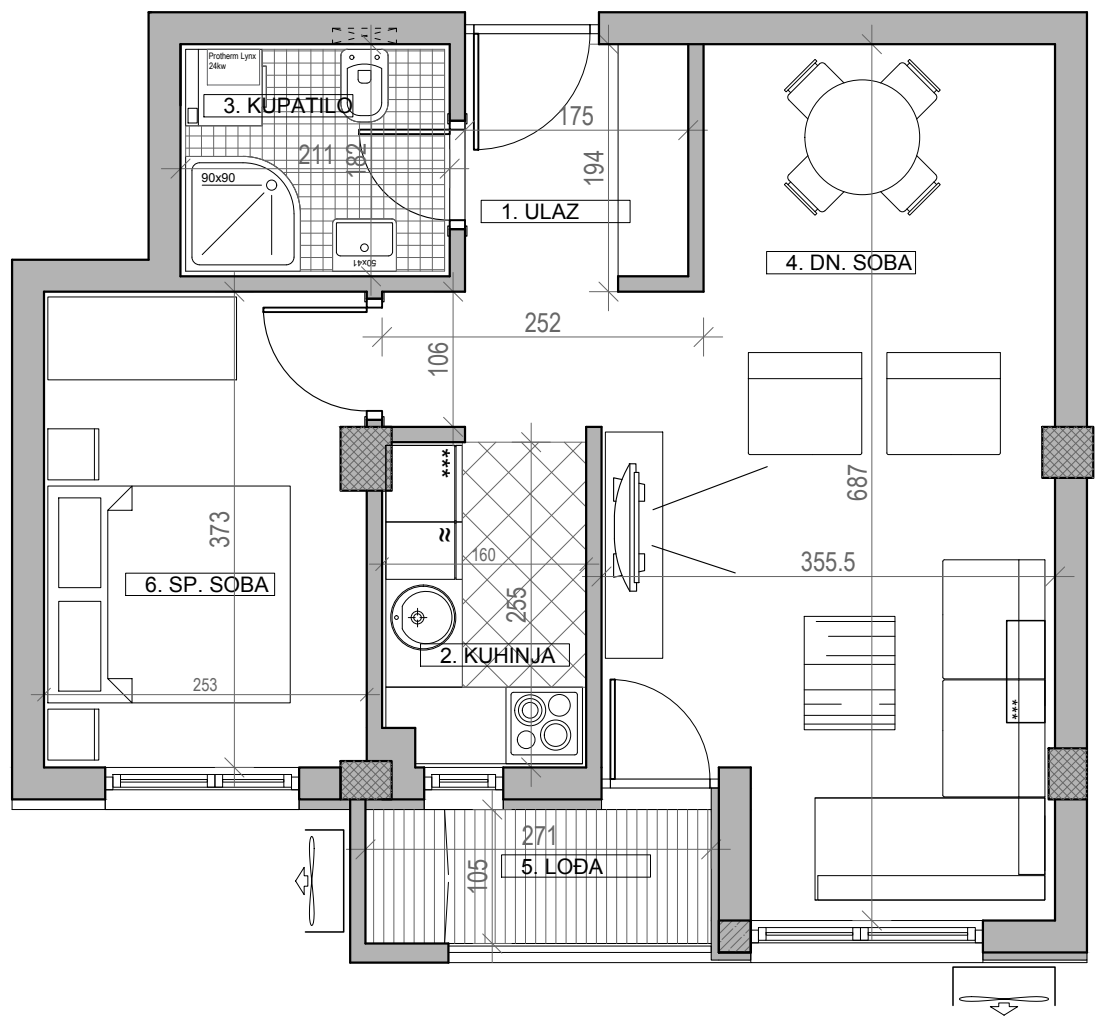
| I SPRAT | | |
|---------------|------------|----------------------------|
| STAN BR. 08 | | |
| br. | prostorija | površina/m ² |
| 1 | ULAZ | 3.09 |
| 2 | KUHINJA | 5.48 |
| 3 | KUPATILO | 3.43 |
| 4 | DN. SOBA | 23.08 |
| 5 | LOĐA | 2.91 |
| 6 | OSTAVA | 0.82 |
| 7 | SP. SOBA | 8.34 |
| UKUPNO | | 47.15 m² |
| | | -3% |
| | | 45.74 m² |



ULICA SVETOSAVSKA



osnova stana br. 09, ulaz broj 1
I SPRAT / **P=46.68 m²**



STAMBENA ZGRADA Su+P+4+Pk

Novi Banovci, ul. Svetosavska 2
kp 2390 / 141

| I SPRAT STAN BR. 09 | | |
|------------------------|------------|----------------------------|
| br. | prostorija | površina/m ² |
| 1 | ULAZ | 5.11 |
| 2 | KUHINJA | 4.00 |
| 3 | KUPATILO | 3.84 |
| 4 | DN. SOBA | 21.47 |
| 5 | LOĐA | 2.91 |
| 6 | SP. SOBA | 9.35 |
| UKUPNO | | 46.68 m² |
| | | -3% |
| | | 45.28 m² |

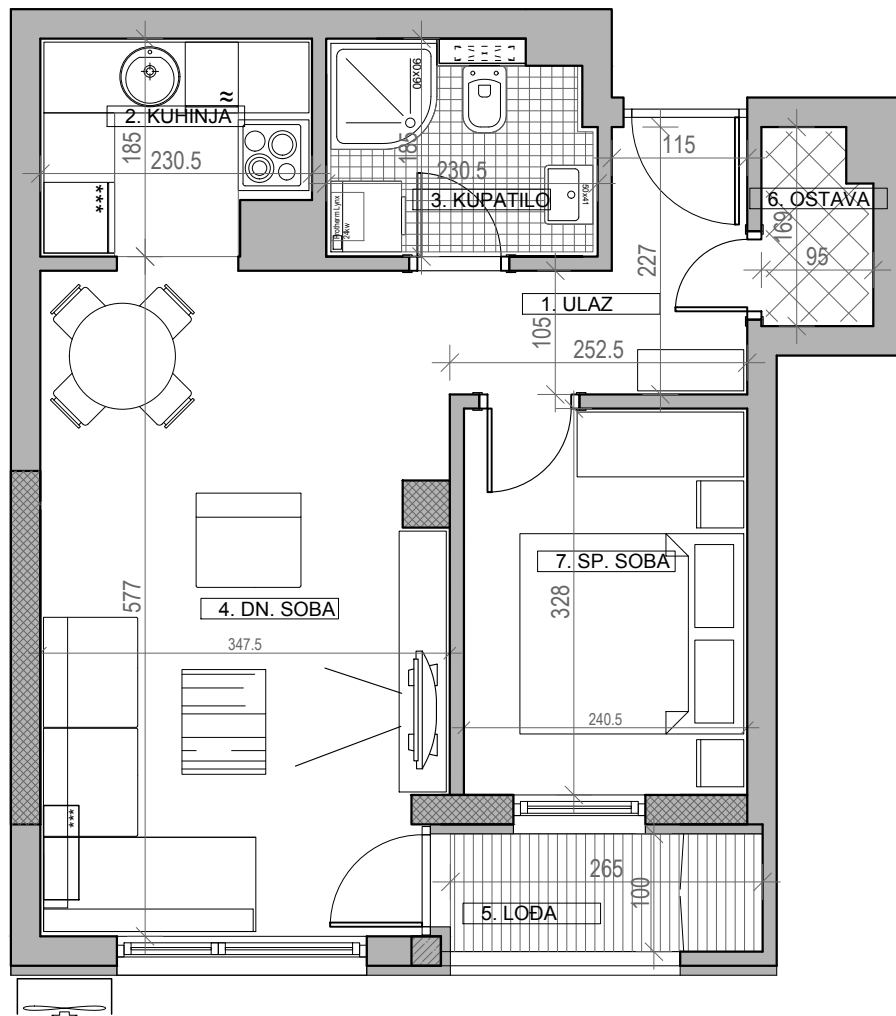


ULICA SVETOSAVSKA



osnova stana br. 10, ulaz broj 1

I SPRAT / **P=43.31 m²**

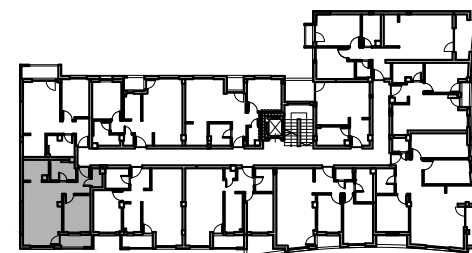


STAMBENA ZGRADA Su+P+4+Pk

Novi Banovci, ul. Svetosavska 2

kp 2390 / 141

| I SPRAT | | |
|---------------|------------|----------------------------|
| STAN BR. 10 | | |
| br. | prostorija | površina/m ² |
| 1 | ULAZ | 4.05 |
| 2 | KUHINJA | 4.09 |
| 3 | KUPATILO | 4.05 |
| 4 | DN. SOBA | 19.08 |
| 5 | LOĐA | 2.65 |
| 6 | OSTAVA | 1.50 |
| 7 | SP. SOBA | 7.89 |
| UKUPNO | | 43.31 m² |
| -3% | | 42.01 m² |

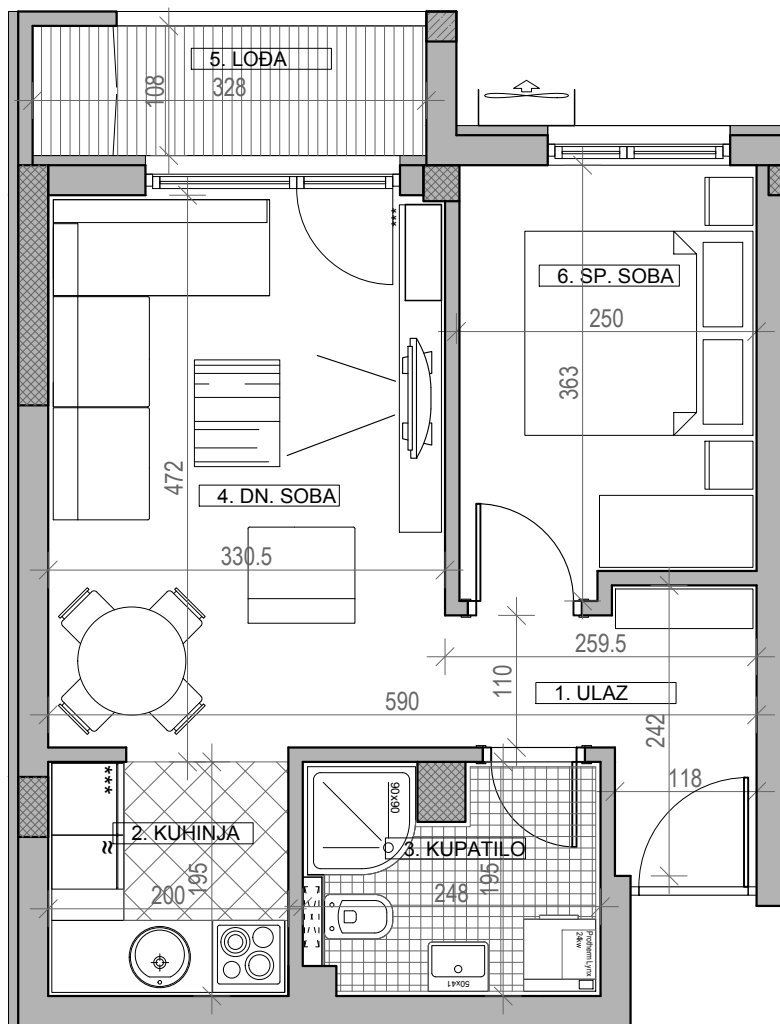


ULICA SVETOSAVSKA



osnova stana br. 11, ulaz broj 1

I SPRAT / **P=40.13 m²**

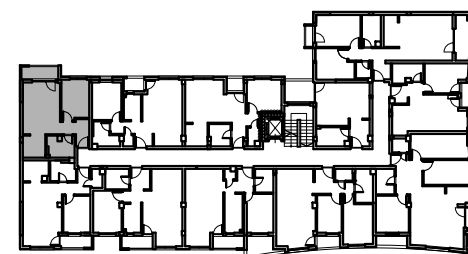


STAMBENA ZGRADA Su+P+4+Pk

Novi Banovci, ul. Svetosavska 2

kp 2390 / 141

| I SPRAT | | |
|---------------|------------|----------------------------|
| STAN BR. 11 | | |
| br. | prostorija | površina/m ² |
| 1 | ULAZ | 4.41 |
| 2 | KUHINJA | 3.91 |
| 3 | KUPATILO | 4.43 |
| 4 | DN. SOBA | 15.19 |
| 5 | LOĐA | 3.54 |
| 6 | SP. SOBA | 8.65 |
| UKUPNO | | 40.13 m² |
| -3% | | 38.93 m² |



ULICA SVETOSAVSKA



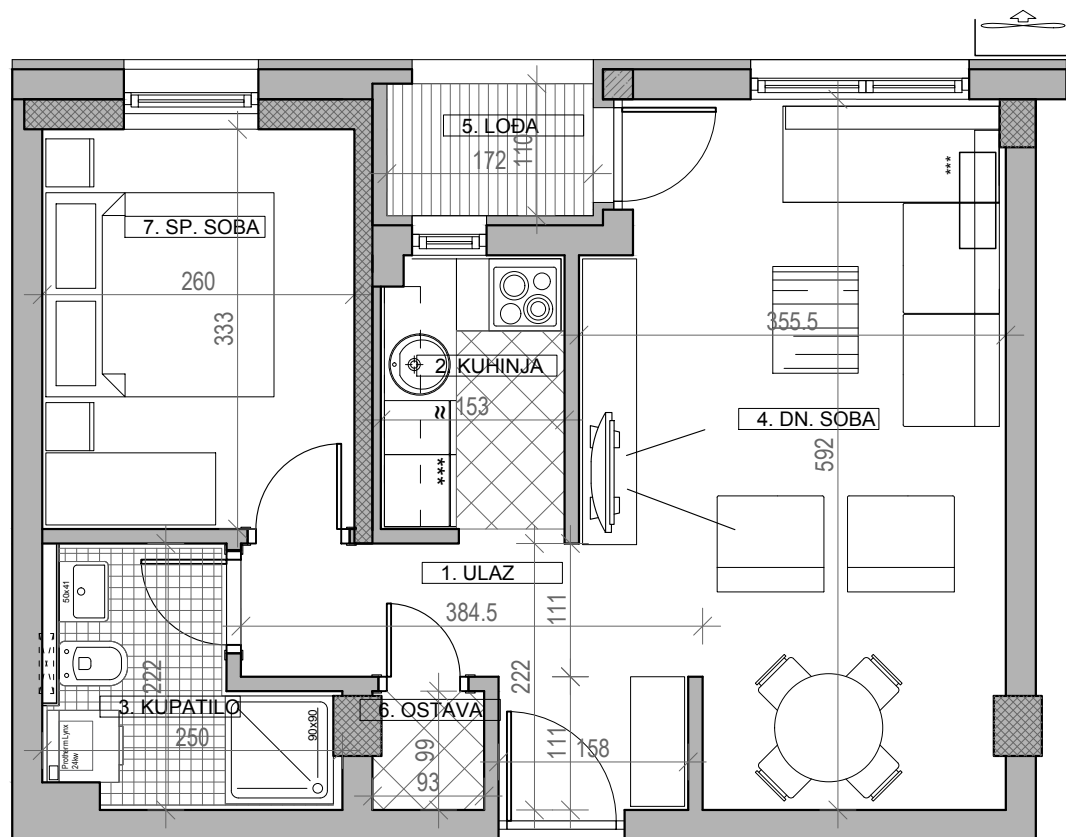
osnova stana br. 12, ulaz broj 1

I SPRAT / **P=43.10 m²**

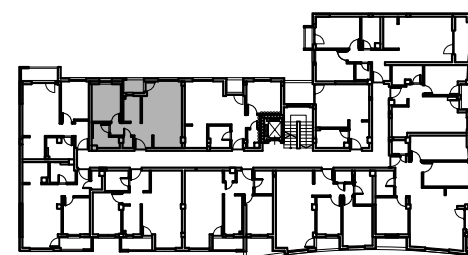
STAMBENA ZGRADA Su+P+4+Pk

Novi Banovci, ul. Svetosavska 2

kp 2390 / 141



| I SPRAT | | |
|---------------|------------|----------------------------|
| STAN BR. 12 | | |
| br. | prostorija | površina/m ² |
| 1 | ULAZ | 4.87 |
| 2 | KUHINJA | 3.44 |
| 3 | KUPATILO | 4.18 |
| 4 | DN. SOBA | 19.21 |
| 5 | LOĐA | 1.89 |
| 6 | OSTAVA | 0.85 |
| 7 | SP. SOBA | 8.66 |
| UKUPNO | | 43.10 m² |
| -3% | | 41.81 m² |



ULICA SVETOSAVSKA



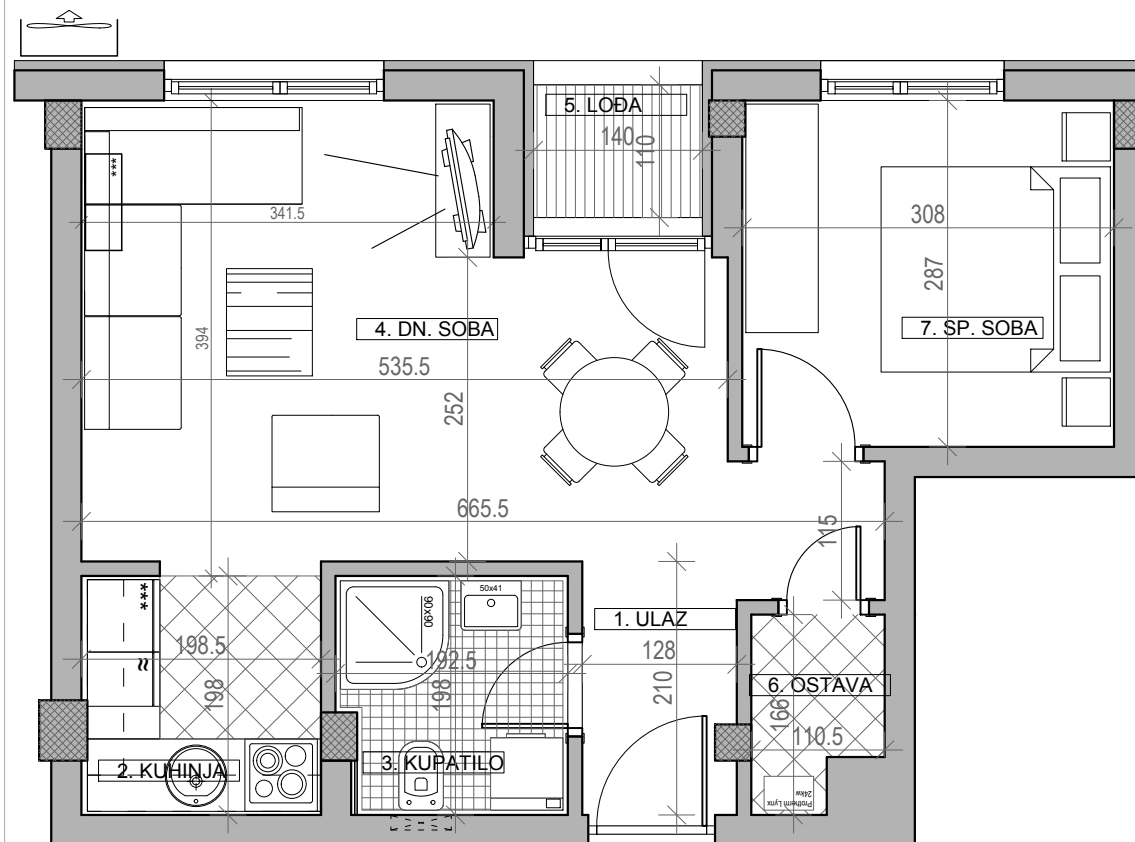
osnova stana br. 13, ulaz broj 1

I SPRAT / **P=41.76 m²**

STAMBENA ZGRADA Su+P+4+Pk

Novi Banovci, ul. Svetosavska 2

kp 2390 / 141



| I SPRAT | | |
|---------------|------------|----------------------------|
| STAN BR. 13 | | |
| br. | prostorija | površina/m ² |
| 1 | ULAZ | 4.61 |
| 2 | KUHINJA | 4.08 |
| 3 | KUPATILO | 3.66 |
| 4 | DN. SOBA | 17.43 |
| 5 | LOĐA | 1.54 |
| 6 | OSTAVA | 1.60 |
| 7 | SP. SOBA | 8.84 |
| UKUPNO | | 41.76 m² |
| | | -3% |
| | | 40.51 m² |

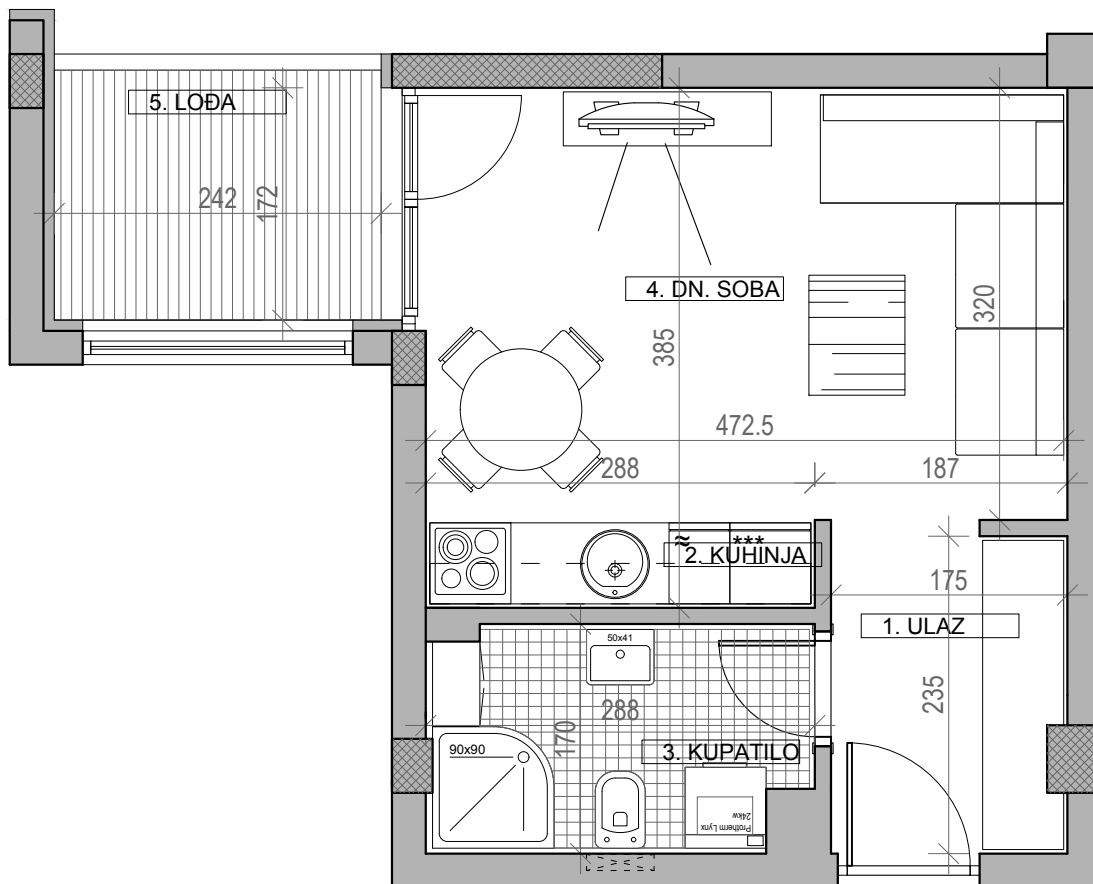


ULICA SVETOSAVSKA



osnova stana br. 14, ulaz broj 1

II SPRAT / **P=30.35 m²**

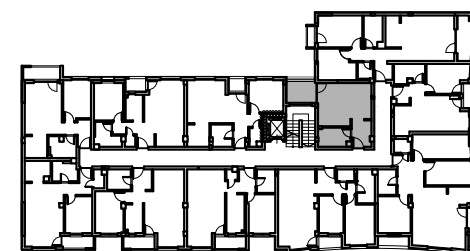


STAMBENA ZGRADA Su+P+4+Pk

Novi Banovci, ul. Svetosavska 2

kp 2390 / 141

| II SPRAT | | |
|---------------|------------|----------------------------|
| STAN BR. 14 | | |
| br. | prostorija | površina/m ² |
| 1 | ULAZ | 4.04 |
| 2 | KUHINJA | 1.84 |
| 3 | KUPATILO | 4.67 |
| 4 | DN. SOBA | 15.32 |
| 5 | LOĐA | 4.48 |
| UKUPNO | | 30.35 m² |
| | | -3% |
| | | 29.44 m² |



ULICA SVETOSAVSKA

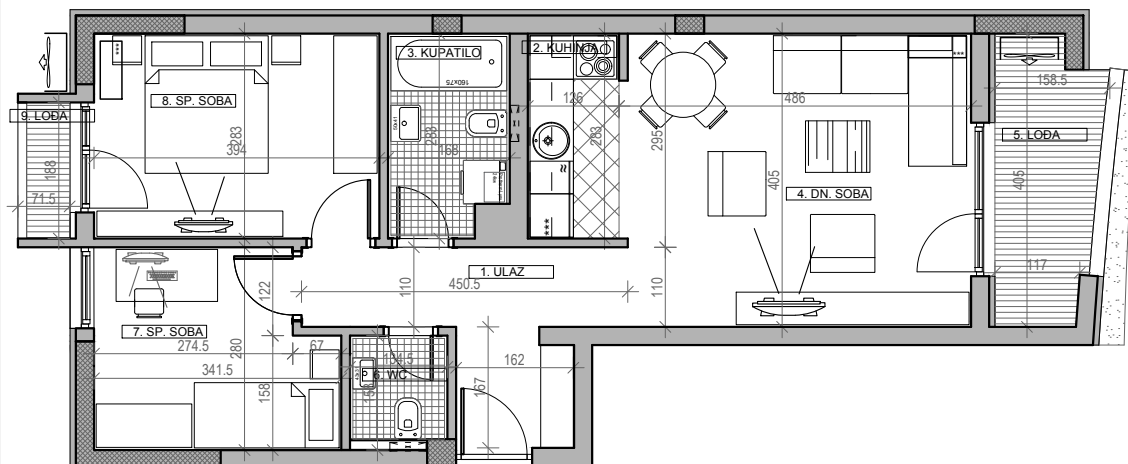


osnova stana br. 15, ulaz broj 1
II SPRAT / **P=63.16 m²**

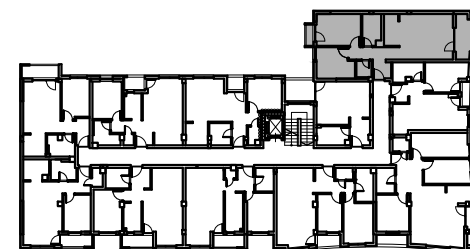
STAMBENA ZGRADA Su+P+4+Pk

Novi Banovci, ul. Svetosavska 2

kp 2390 / 141



| II SPRAT | | |
|---------------|------------|----------------------------|
| STAN BR. 15 | | |
| br. | prostorija | površina/m ² |
| 1 | ULAZ | 7.54 |
| 2 | KUHINJA | 3.57 |
| 3 | KUPATILO | 4.52 |
| 4 | DN. SOBA | 19.20 |
| 5 | LOĐA | 5.39 |
| 6 | WC | 1.92 |
| 7 | SP. SOBA | 8.74 |
| 8 | SP. SOBA | 11.15 |
| 9 | LOĐA | 1.13 |
| UKUPNO | | 63.16 m² |
| | | -3% |
| | | 61.27 m² |



ULICA SVETOSAVSKA



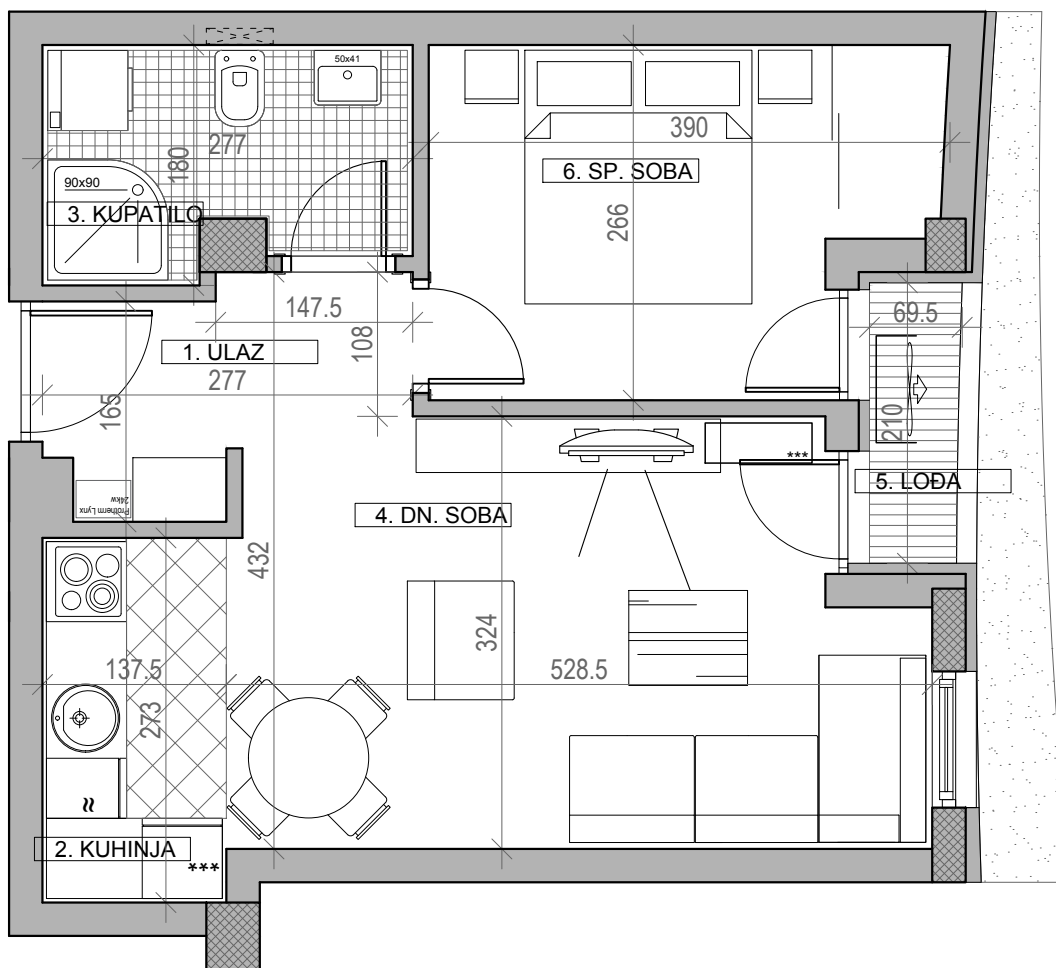
osnova stana br. 16, ulaz broj 1

II SPRAT / **P=38.24 m²**

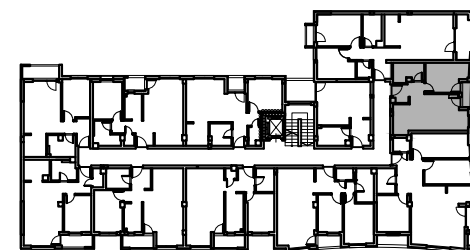
STAMBENA ZGRADA Su+P+4+Pk

Novi Banovci, ul. Svetosavska 2

kp 2390 / 141



| II SPRAT | | |
|---------------|------------|----------------------------|
| STAN BR. 16 | | |
| br. | prostorija | površina/m ² |
| 1 | ULAZ | 3.81 |
| 2 | KUHINJA | 3.76 |
| 3 | KUPATILO | 4.50 |
| 4 | DN. SOBA | 15.58 |
| 5 | LOĐA | 1.41 |
| 6 | SP. SOBA | 9.18 |
| UKUPNO | | 38.24 m² |
| -3% | | 37.09 m² |

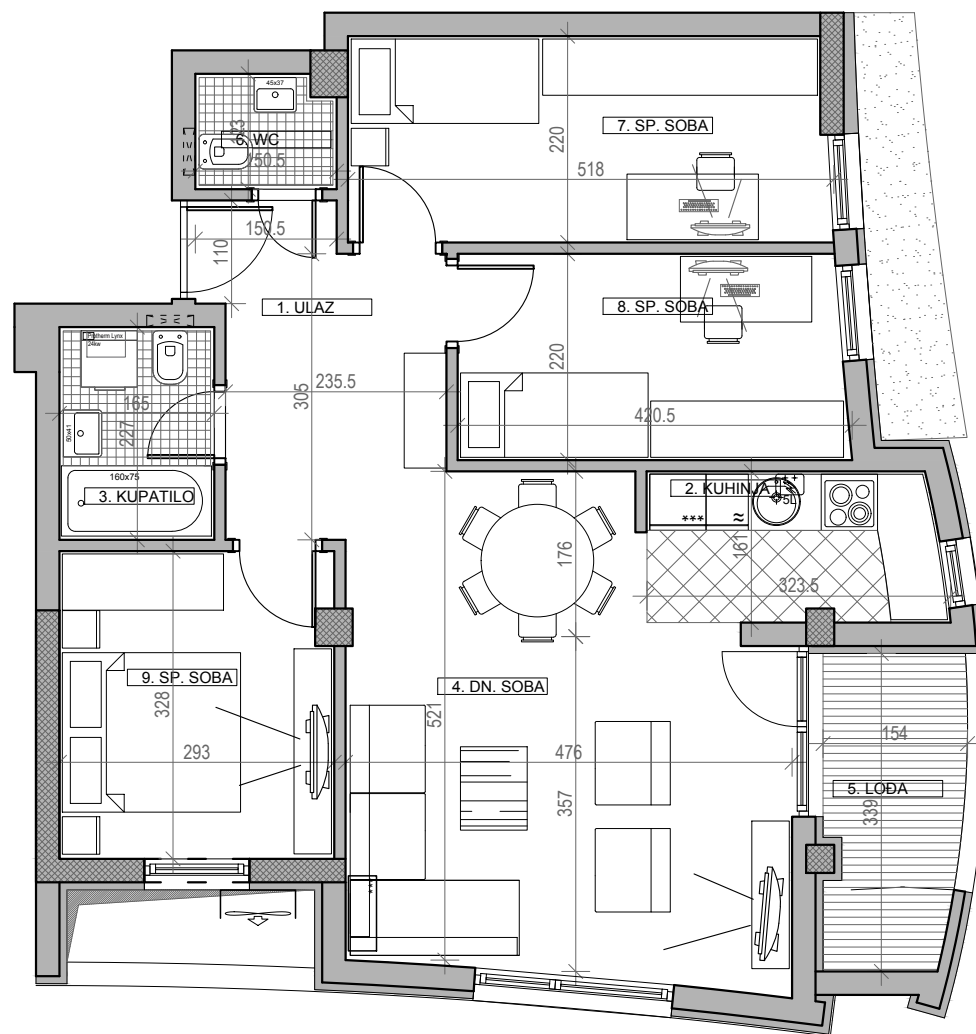


ULICA SVETOSAVSKA



osnova stana br. 17, ulaz broj 1

II SPRAT / **P=75.29 m²**

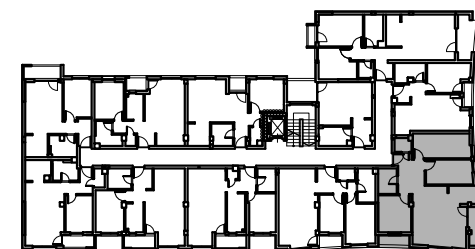


STAMBENA ZGRADA Su+P+4+Pk

Novi Banovci, ul. Svetosavska 2

kp 2390 / 141

| II SPRAT STAN BR. 17 | | |
|-------------------------|------------|----------------------------|
| br. | prostorija | površina/m ² |
| 1 | ULAZ | 7.41 |
| 2 | KUHINJA | 4.94 |
| 3 | KUPATILO | 3.74 |
| 4 | DN. SOBA | 22.92 |
| 5 | LOĐA | 4.73 |
| 6 | WC | 1.78 |
| 7 | SP. SOBA | 11.20 |
| 8 | SP. SOBA | 9.04 |
| 9 | SP. SOBA | 9.53 |
| UKUPNO | | 75.29 m² |
| | | -3% |
| | | 73.03 m² |



ULICA SVETOSAVSKA



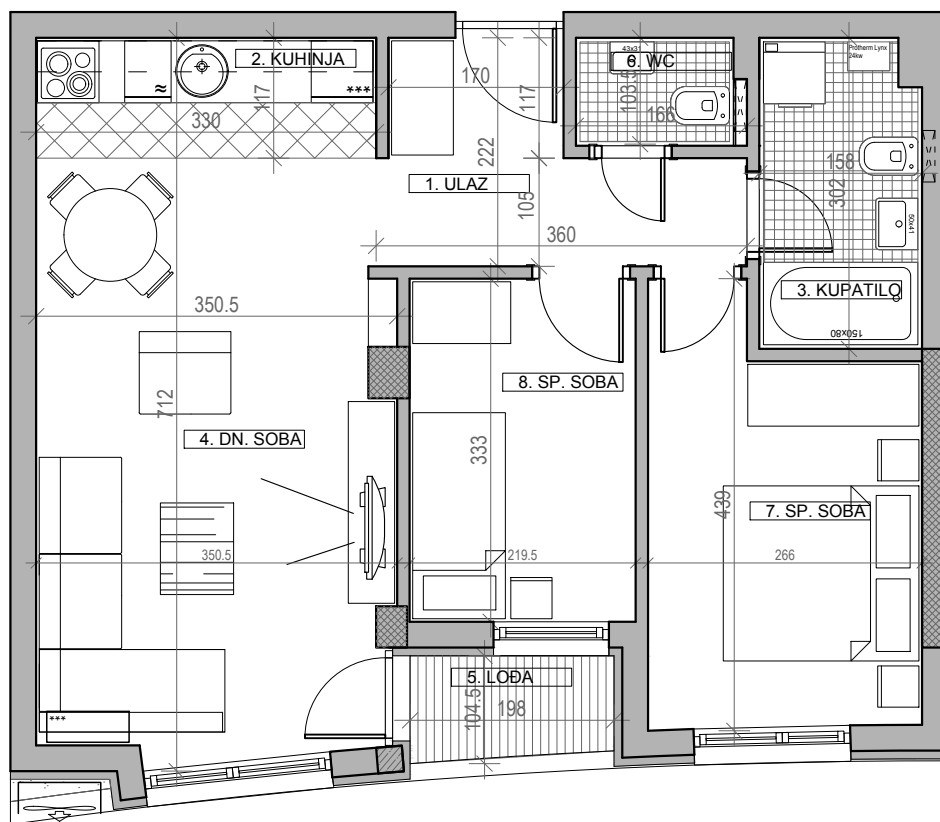
osnova stana br. 18, ulaz broj 1

II SPRAT / **P=55.00 m²**

STAMBENA ZGRADA Su+P+4+Pk

Novi Banovci, ul. Svetosavska 2

kp 2390 / 141



| II SPRAT | | |
|---------------|------------|---------------------------------------|
| STAN BR. 18 | | |
| br. | prostorija | površina/m ² |
| 1 | ULAZ | 5.64 |
| 2 | KUHINJA | 3.86 |
| 3 | KUPATILO | 4.66 |
| 4 | DN. SOBA | 19.74 |
| 5 | LOBA | 1.95 |
| 6 | WC | 1.60 |
| 7 | SP. SOBA | 10.24 |
| 8 | SP. SOBA | 7.31 |
| UKUPNO | | 55.00 m² |
| | | -3% 53.35 m² |



ULICA SVETOSAVSKA

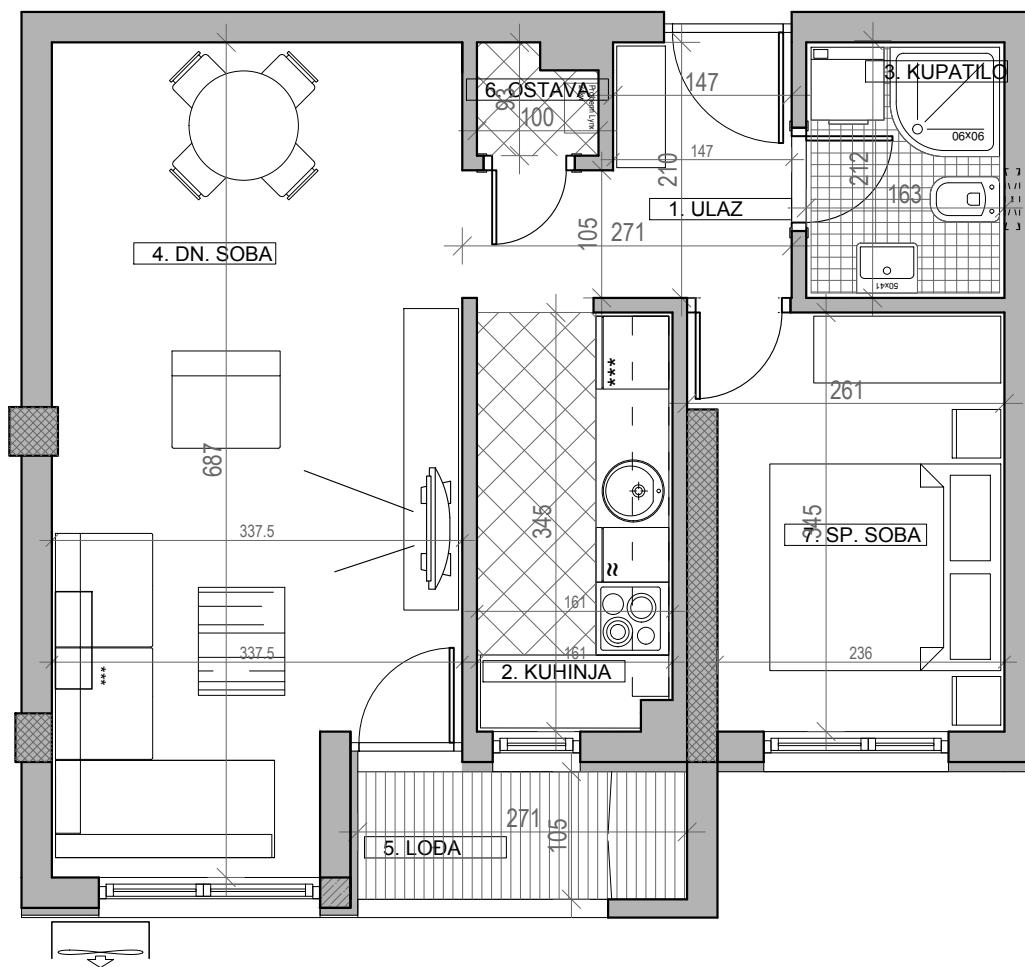


osnova stana br. 19, ulaz broj 1
II SPRAT / **P=47.15 m²**

STAMBENA ZGRADA Su+P+4+Pk

Novi Banovci, ul. Svetosavska 2

kp 2390 / 141



| II SPRAT | | |
|---------------|------------|----------------------------|
| STAN BR. 19 | | |
| br. | prostorija | površina/m ² |
| 1 | ULAZ | 3.09 |
| 2 | KUHINJA | 5.48 |
| 3 | KUPATILO | 3.43 |
| 4 | DN. SOBA | 23.08 |
| 5 | LOBA | 2.91 |
| 6 | OSTAVA | 0.82 |
| 7 | SP. SOBA | 8.34 |
| UKUPNO | | 47.15 m² |
| -3% | | 45.74 m² |

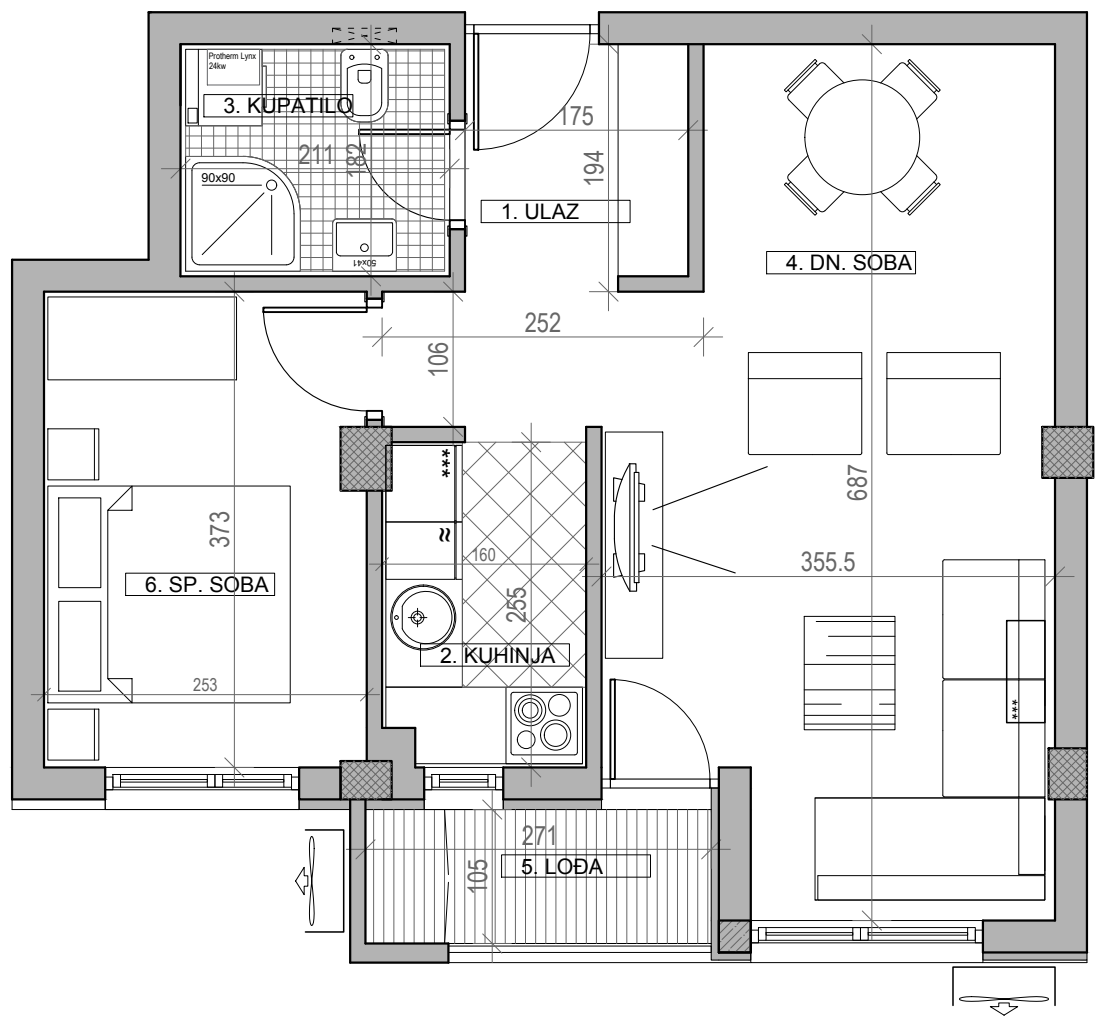


ULICA SVETOSAVSKA



osnova stana br. 20, ulaz broj 1

II SPRAT / **P=46.68 m²**



STAMBENA ZGRADA Su+P+4+Pk

Novi Banovci, ul. Svetosavska 2

kp 2390 / 141

| II SPRAT STAN BR. 20 | | |
|-------------------------|------------|----------------------------|
| br. | prostorija | površina/m ² |
| 1 | ULAZ | 5.11 |
| 2 | KUHINJA | 4.00 |
| 3 | KUPATILO | 3.84 |
| 4 | DN. SOBA | 21.47 |
| 5 | LOĐA | 2.91 |
| 6 | SP. SOBA | 9.35 |
| UKUPNO | | 46.68 m² |
| | | -3% |
| | | 45.28 m² |

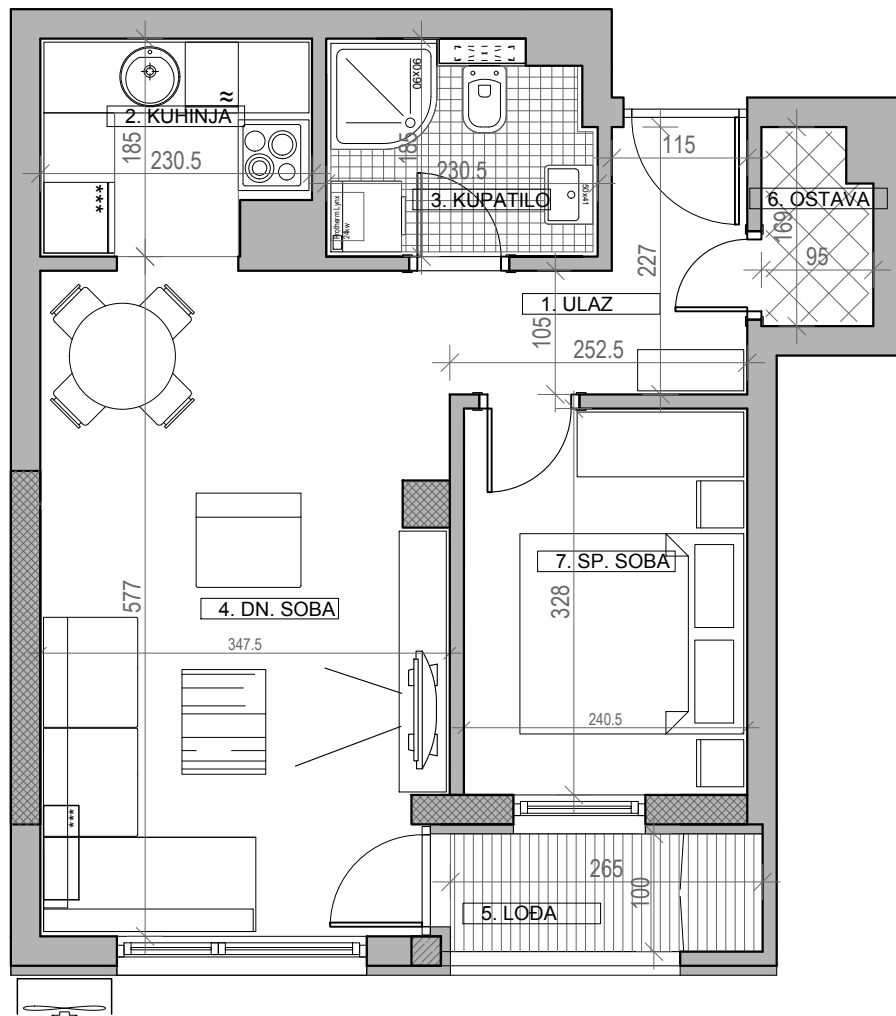


ULICA SVETOSAVSKA



osnova stana br. 21, ulaz broj 1

II SPRAT / **P=43.31 m²**

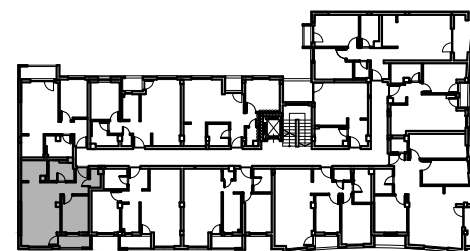


STAMBENA ZGRADA Su+P+4+Pk

Novi Banovci, ul. Svetosavska 2

kp 2390 / 141

| II SPRAT STAN BR. 21 | | |
|-------------------------|------------|---------------------------------------|
| br. | prostorija | površina/m ² |
| 1 | ULAZ | 4.05 |
| 2 | KUHINJA | 4.09 |
| 3 | KUPATILO | 4.05 |
| 4 | DN. SOBA | 19.08 |
| 5 | LOĐA | 2.65 |
| 6 | OSTAVA | 1.50 |
| 7 | SP. SOBA | 7.89 |
| UKUPNO | | 43.31 m² |
| | | -3% 42.01 m² |

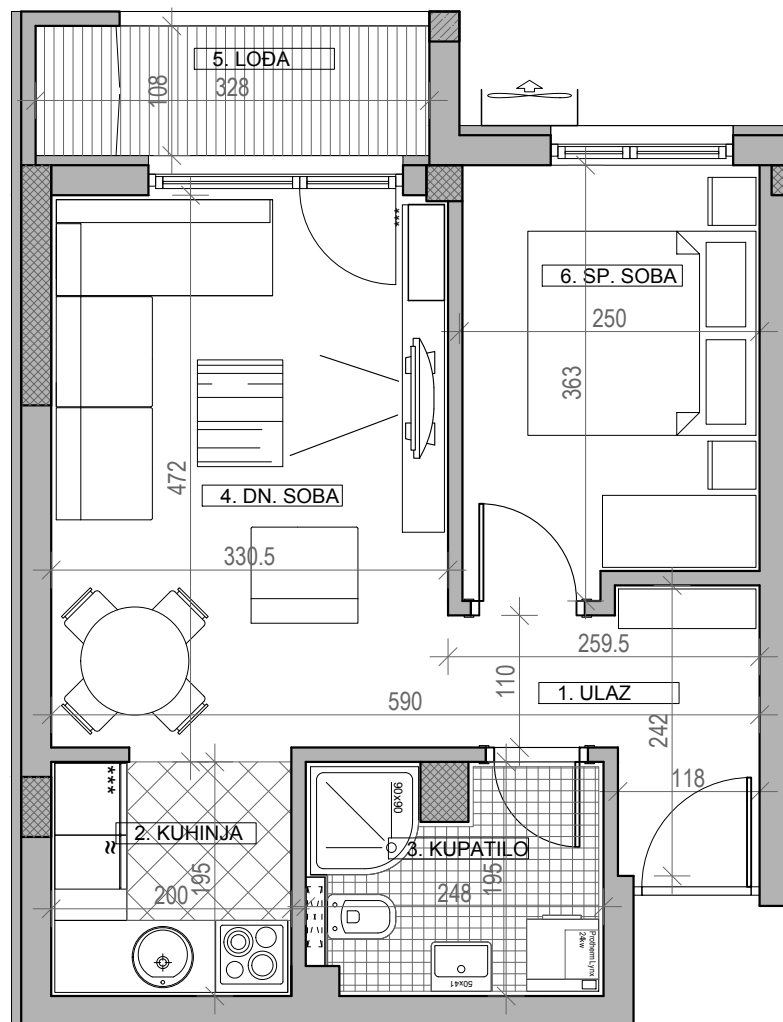


ULICA SVETOSAVSKA



osnova stana br. 22, ulaz broj 1

II SPRAT / **P=40.13 m²**

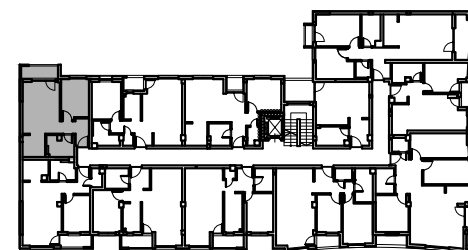


STAMBENA ZGRADA Su+P+4+Pk

Novi Banovci, ul. Svetosavska 2

kp 2390 / 141

| II SPRAT | | |
|---------------|------------|----------------------------|
| STAN BR. 22 | | |
| br. | prostorija | površina/m ² |
| 1 | ULAZ | 4.41 |
| 2 | KUHINJA | 3.91 |
| 3 | KUPATILO | 4.43 |
| 4 | DN. SOBA | 15.19 |
| 5 | LOĐA | 3.54 |
| 6 | SP. SOBA | 8.65 |
| UKUPNO | | 40.13 m² |
| -3% | | 38.93 m² |



ULICA SVETOSAVSKA



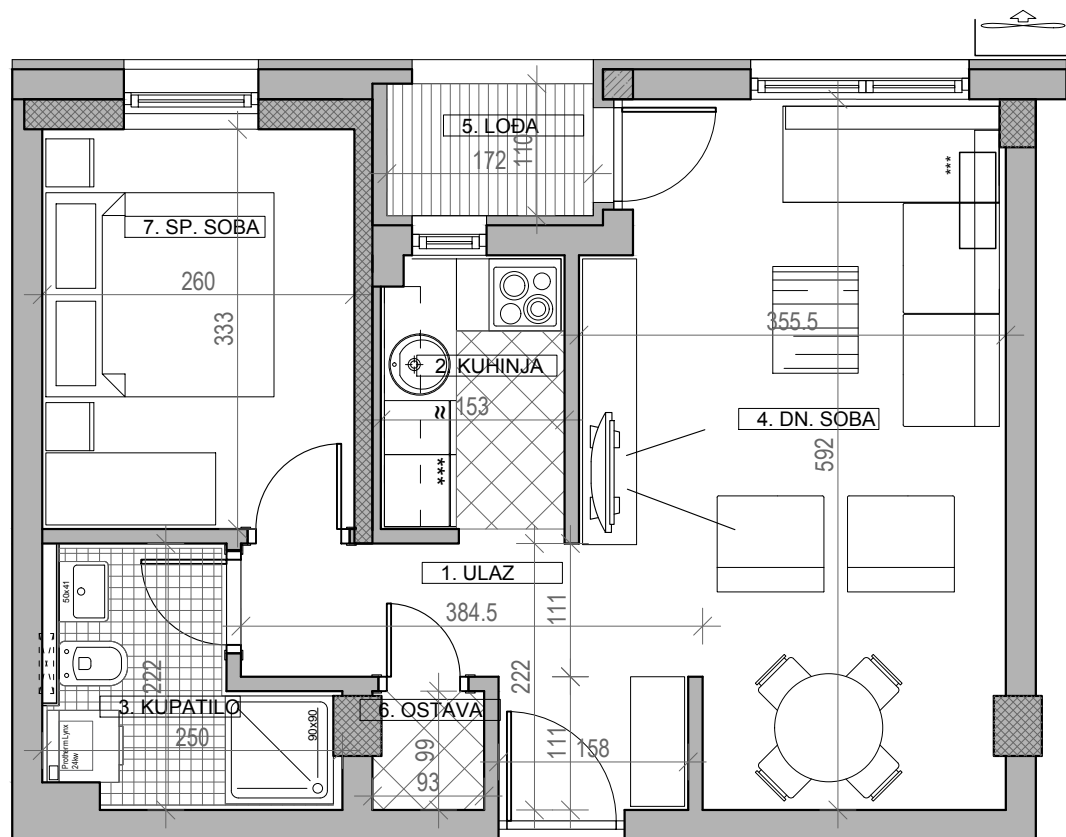
osnova stana br. 23, ulaz broj 1

II SPRAT / **P=43.10 m²**

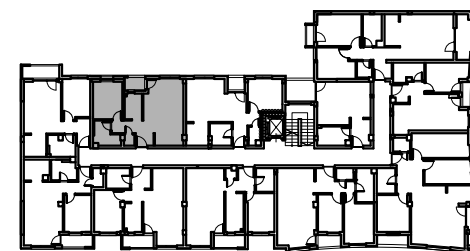
STAMBENA ZGRADA Su+P+4+Pk

Novi Banovci, ul. Svetosavska 2

kp 2390 / 141



| II SPRAT | | |
|---------------|------------|----------------------------|
| STAN BR. 23 | | |
| br. | prostorija | površina/m ² |
| 1 | ULAZ | 4.87 |
| 2 | KUHINJA | 3.44 |
| 3 | KUPATILO | 4.18 |
| 4 | DN. SOBA | 19.21 |
| 5 | LOĐA | 1.89 |
| 6 | OSTAVA | 0.85 |
| 7 | SP. SOBA | 8.66 |
| UKUPNO | | 43.10 m² |
| -3% | | 41.81 m² |



ULICA SVETOSAVSKA

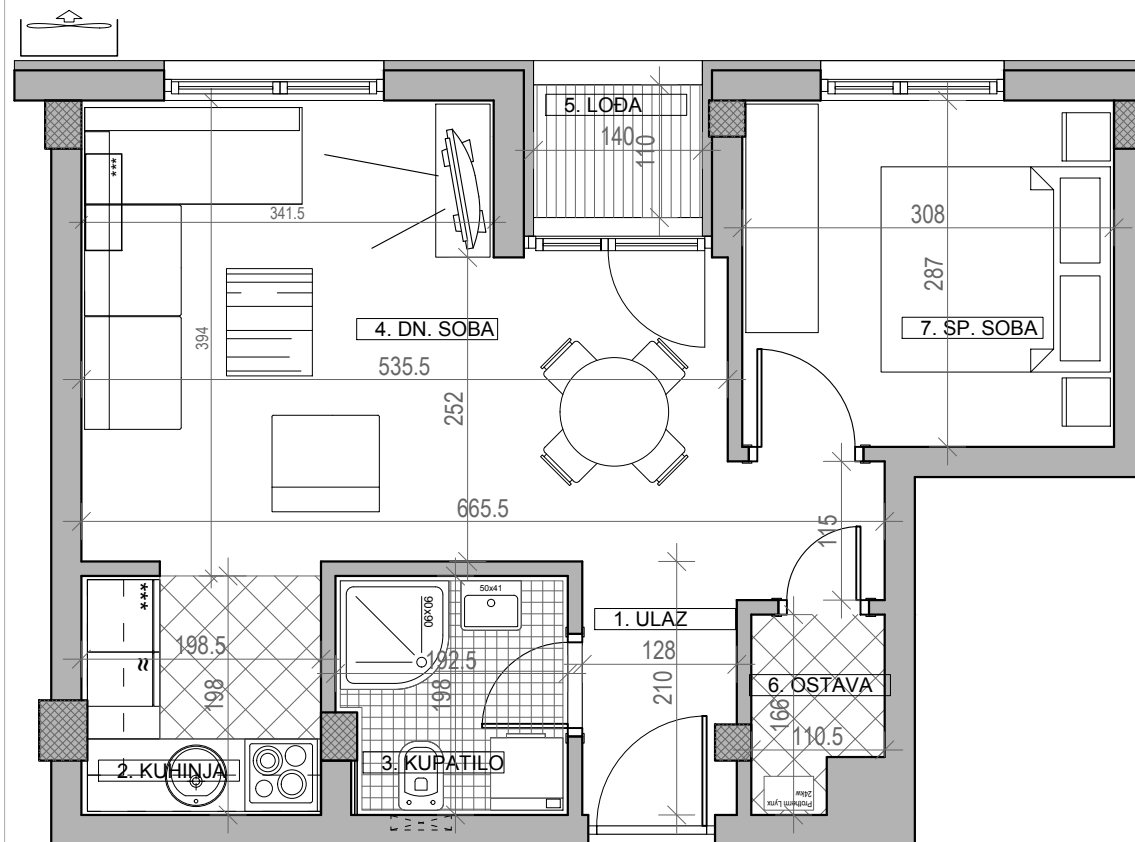
osnova stana br. 24, ulaz broj 1

II SPRAT / **P=41.76 m²**

STAMBENA ZGRADA Su+P+4+Pk

Novi Banovci, ul. Svetosavska 2

kp 2390 / 141



| II SPRAT | | |
|---------------|------------|----------------------------|
| STAN BR. 24 | | |
| br. | prostoriya | površina/m ² |
| 1 | ULAZ | 4.61 |
| 2 | KUHINJA | 4.08 |
| 3 | KUPATILO | 3.66 |
| 4 | DN. SOBA | 17.43 |
| 5 | LOBA | 1.54 |
| 6 | OSTAVA | 1.60 |
| 7 | SP. SOBA | 8.84 |
| UKUPNO | | 41.76 m² |
| | | -3% |
| | | 40.51 m² |

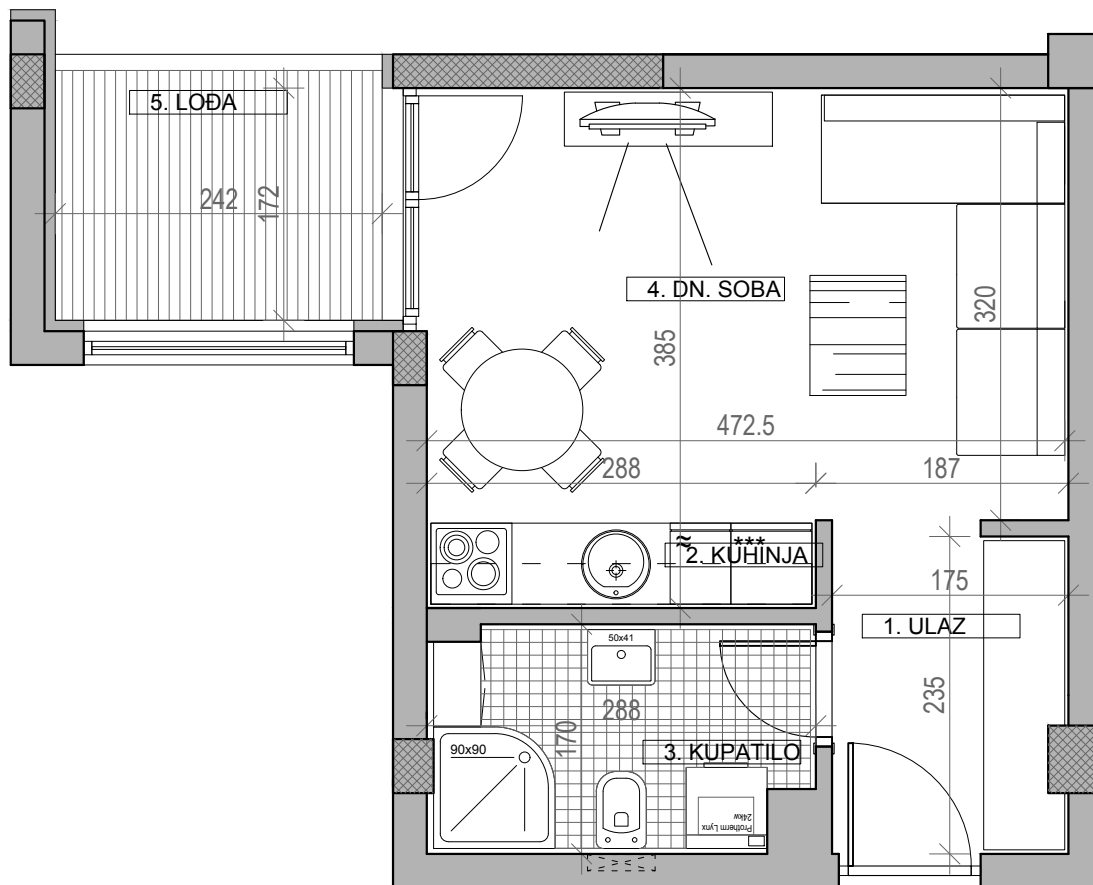


ULICA SVETOSAVSKA



osnova stana br. 25, ulaz broj 1

III SPRAT / **P=30.23 m²**

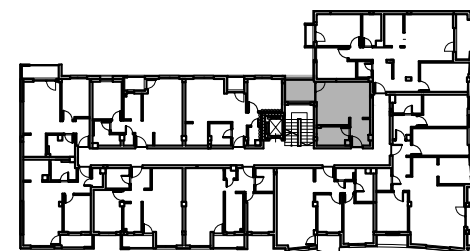


STAMBENA ZGRADA Su+P+4+Pk

Novi Banovci, ul. Svetosavska 2

kp 2390 / 141

| III SPRAT STAN BR. 25 | | |
|--------------------------|------------|----------------------------|
| br. | prostorija | površina/m ² |
| 1 | ULAZ | 4.04 |
| 2 | KUHINJA | 1.84 |
| 3 | KUPATILO | 4.67 |
| 4 | DN. SOBA | 15.20 |
| 5 | LOĐA | 4.48 |
| UKUPNO | | 30.23 m² |
| | | -3% |
| | | 29.32 m² |



ULICA SVETOSAVSKA



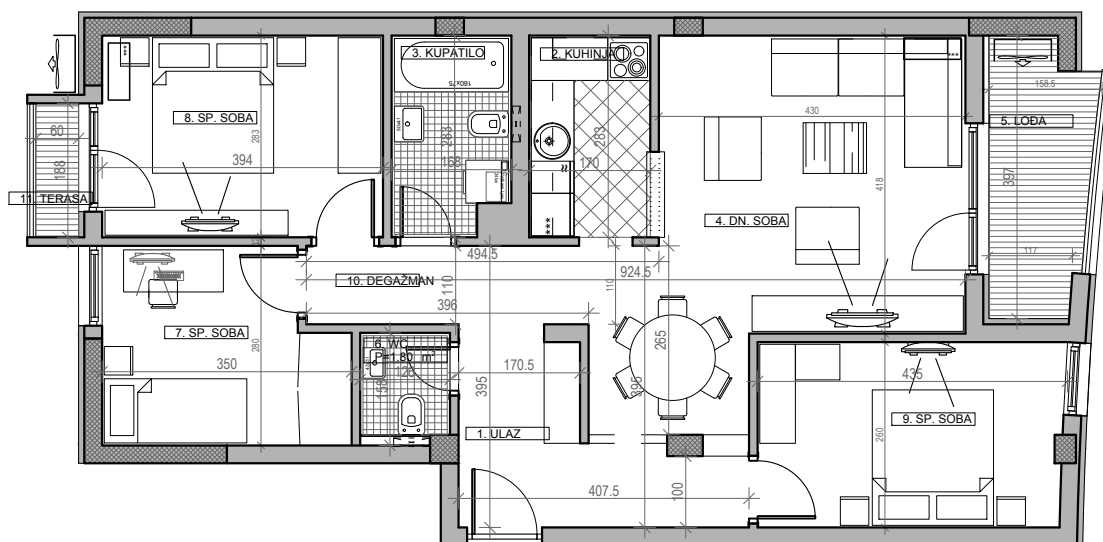
osnova stana br. 26, ulaz broj 1

III SPRAT / **P=83.13 m²**

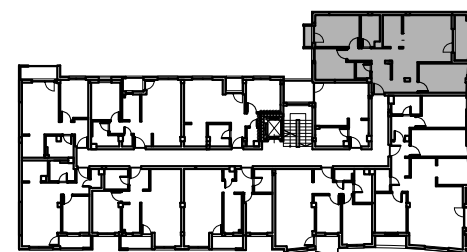
STAMBENA ZGRADA Su+P+4+Pk

Novi Banovci, ul. Svetosavska 2

kp 2390 / 141



| III SPRAT | | |
|---------------|------------|----------------------------|
| STAN BR. 26 | | |
| br. | prostorija | površina/m ² |
| 1 | ULAZ | 7.43 |
| 2 | KUHINJA | 4.81 |
| 3 | KUPATILO | 4.52 |
| 4 | DN. SOBA | 24.38 |
| 5 | LOĐA | 5.72 |
| 6 | WC | 1.80 |
| 7 | SP. SOBA | 8.88 |
| 8 | SP. SOBA | 11.15 |
| 9 | SP. SOBA | 10.96 |
| 10 | DEGAŽMAN | 2.35 |
| 11 | TERASA | 1.13 |
| UKUPNO | | 83.13 m² |
| | | -3% |
| | | 80.64 m² |

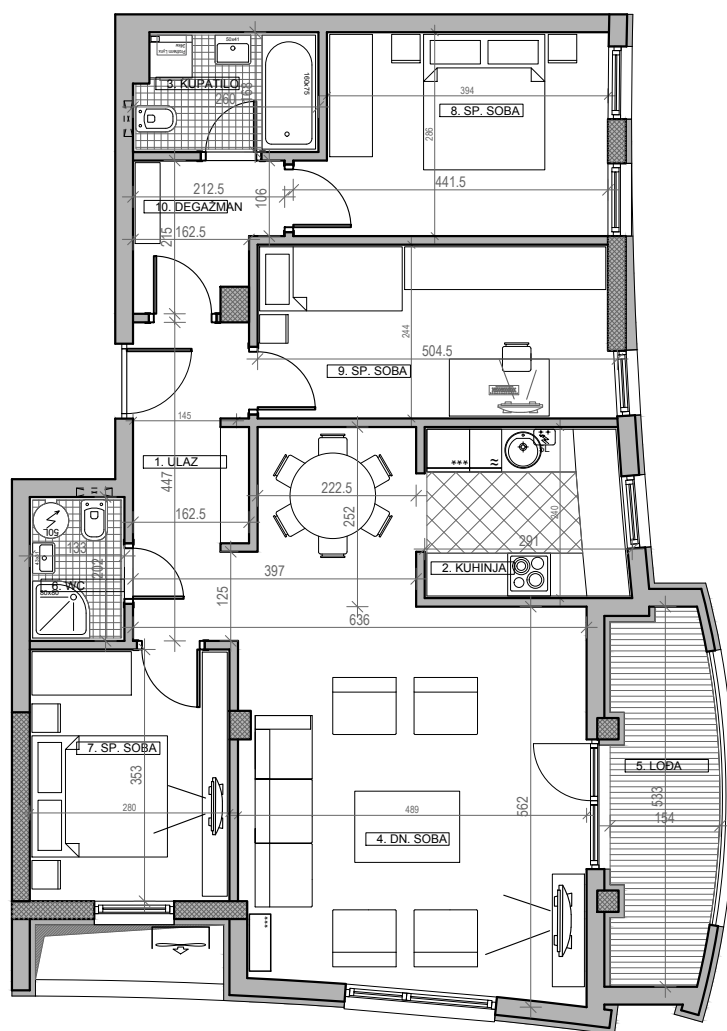


ULICA SVETOSAVSKA



osnova stana br. 27, ulaz broj 1

III SPRAT / **P=97.48 m²**

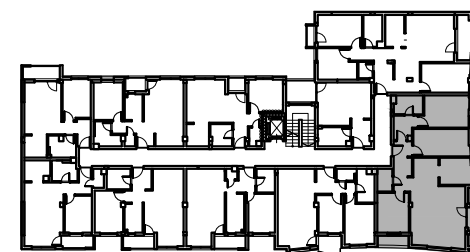


STAMBENA ZGRADA Su+P+4+Pk

Novi Banovci, ul. Svetosavska 2

kp 2390 / 141

| III SPRAT STAN BR. 27 | | |
|--------------------------|------------|----------------------------|
| br. | prostorija | površina/m ² |
| 1 | ULAZ | 5.02 |
| 2 | KUHINJA | 6.74 |
| 3 | KUPATILO | 4.20 |
| 4 | DN. SOBA | 33.95 |
| 5 | LOBA | 7.30 |
| 6 | WC | 2.68 |
| 7 | SP. SOBA | 9.89 |
| 8 | SP. SOBA | 11.77 |
| 9 | SP. SOBA | 12.05 |
| 10 | DEGAŽMAN | 3.88 |
| UKUPNO | | 97.48 m² |
| | | -3% |
| | | 95.56 m² |



ULICA SVETOSAVSKA



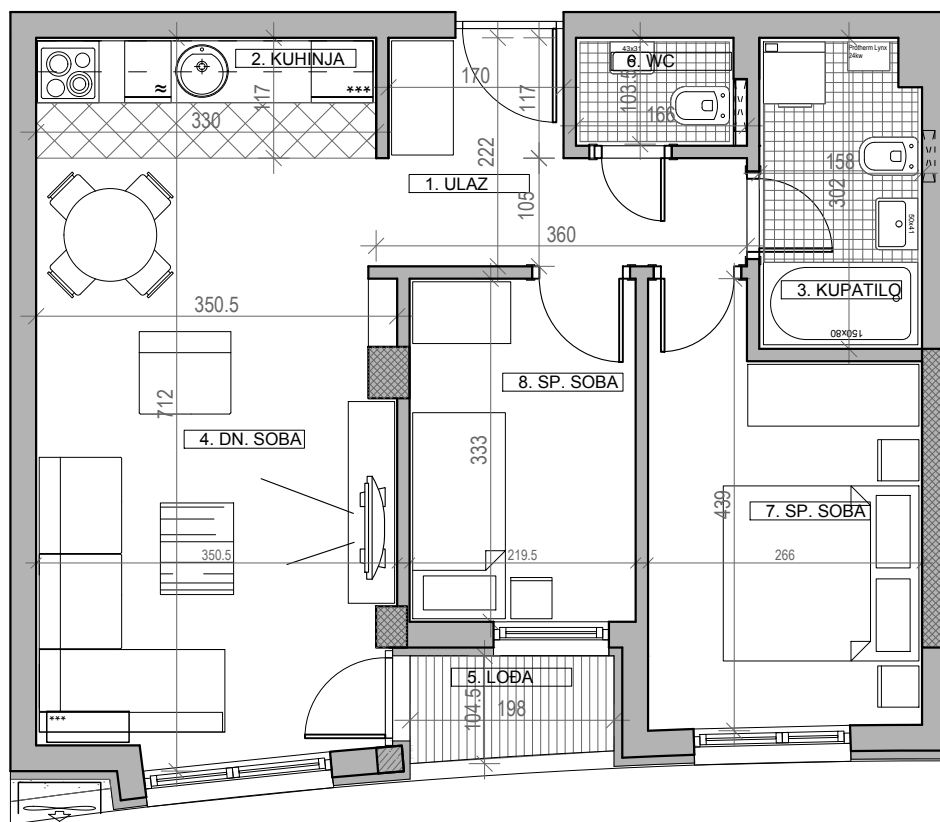
osnova stana br. 28, ulaz broj 1

III SPRAT / **P=55.82 m²**

STAMBENA ZGRADA Su+P+4+Pk

Novi Banovci, ul. Svetosavska 2

kp 2390 / 141



| III SPRAT | | |
|---------------|------------|----------------------------|
| STAN BR. 28 | | |
| br. | prostorija | površina/m ² |
| 1 | ULAZ | 5.64 |
| 2 | KUHINJA | 3.86 |
| 3 | KUPATILO | 4.40 |
| 4 | DN. SOBA | 19.60 |
| 5 | LOĐA | 3.00 |
| 6 | WC | 1.60 |
| 7 | SP. SOBA | 10.27 |
| 8 | SP. SOBA | 7.45 |
| UKUPNO | | 55.82 m² |
| | | -3% |
| | | 54.15 m² |



ULICA SVETOSAVSKA



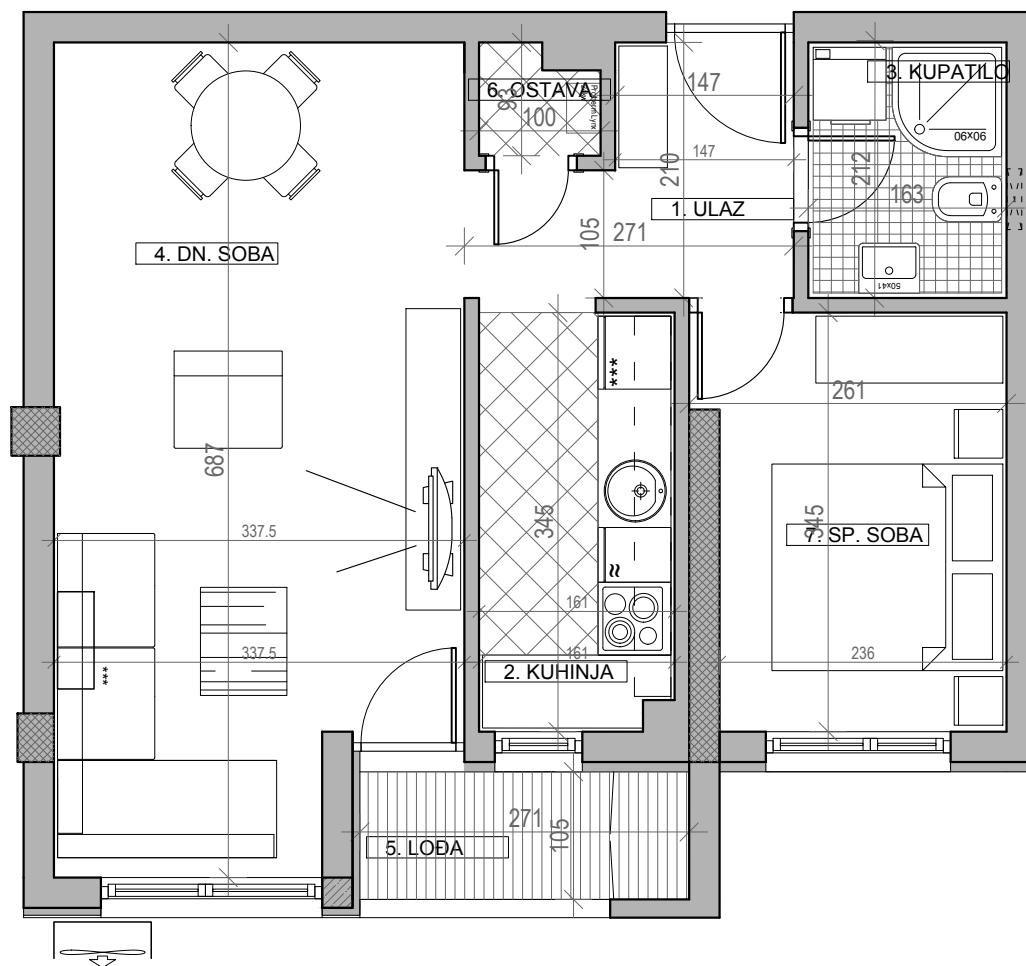
osnova stana br. 29, ulaz broj 1

III SPRAT / **P=47.32 m²**

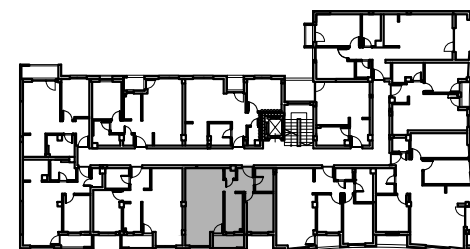
STAMBENA ZGRADA Su+P+4+Pk

Novi Banovci, ul. Svetosavska 2

kp 2390 / 141

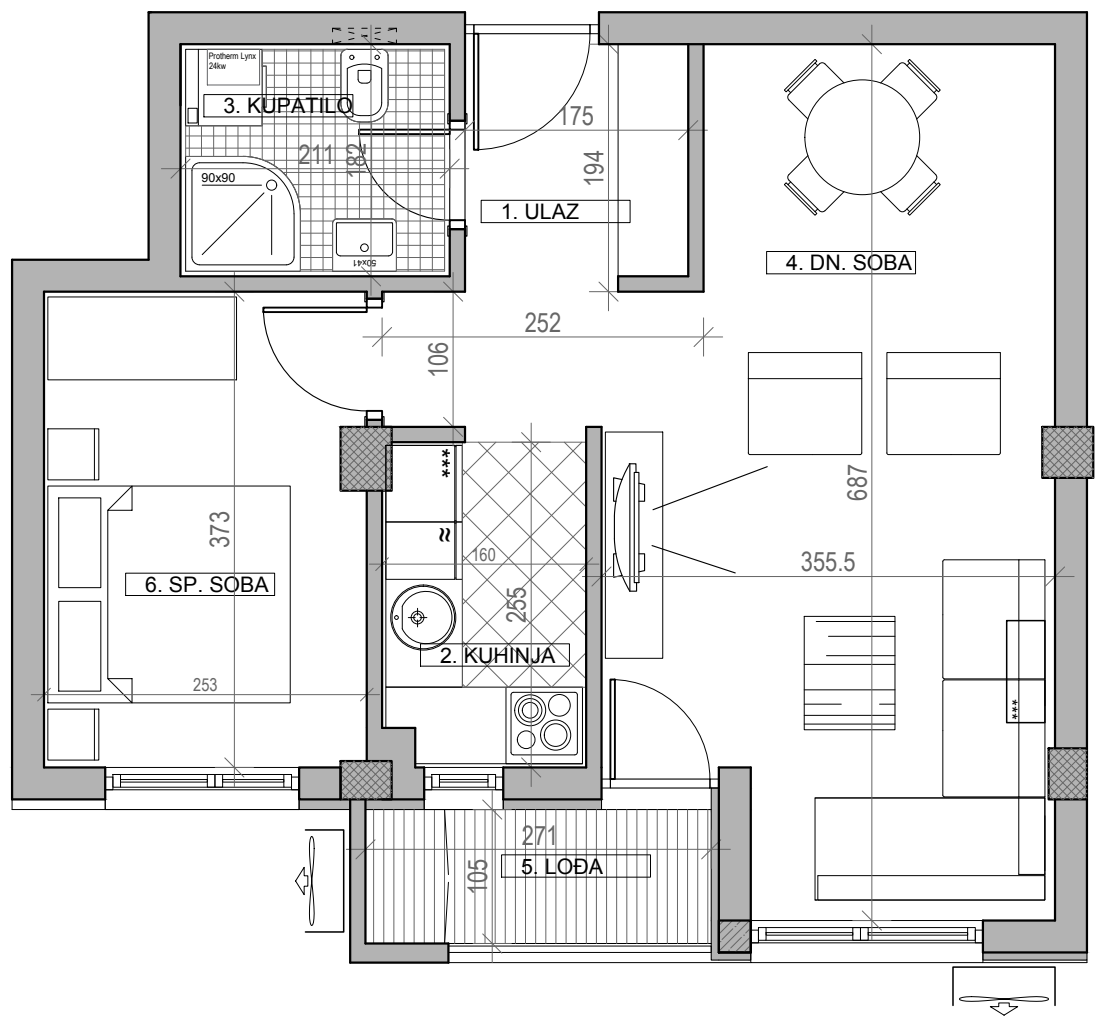


| III SPRAT | | |
|---------------|------------|----------------------------|
| STAN BR. 29 | | |
| br. | prostorija | površina/m ² |
| 1 | ULAZ | 3.09 |
| 2 | KUHINJA | 5.48 |
| 3 | KUPATILO | 3.43 |
| 4 | DN. SOBA | 23.25 |
| 5 | LOĐA | 2.91 |
| 6 | OSTAVA | 0.82 |
| 7 | SP. SOBA | 8.34 |
| UKUPNO | | 47.32 m² |
| -3% | | 45.90 m² |



ULICA SVETOSAVSKA

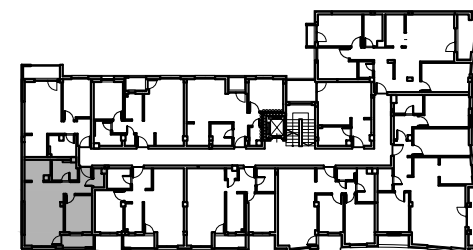
osnova stana br. 30, ulaz broj 1
III SPRAT / **P=46.52 m²**



STAMBENA ZGRADA Su+P+4+Pk

Novi Banovci, ul. Svetosavska 2
kp 2390 / 141

| III SPRAT STAN BR. 30 | | |
|--------------------------|------------|----------------------------|
| br. | prostorija | površina/m ² |
| 1 | ULAZ | 5.11 |
| 2 | KUHINJA | 4.01 |
| 3 | KUPATILO | 3.84 |
| 4 | DN. SOBA | 21.30 |
| 5 | LOĐA | 2.91 |
| 6 | SP. SOBA | 9.35 |
| UKUPNO | | 46.52 m² |
| | | -3% |
| | | 45.12 m² |

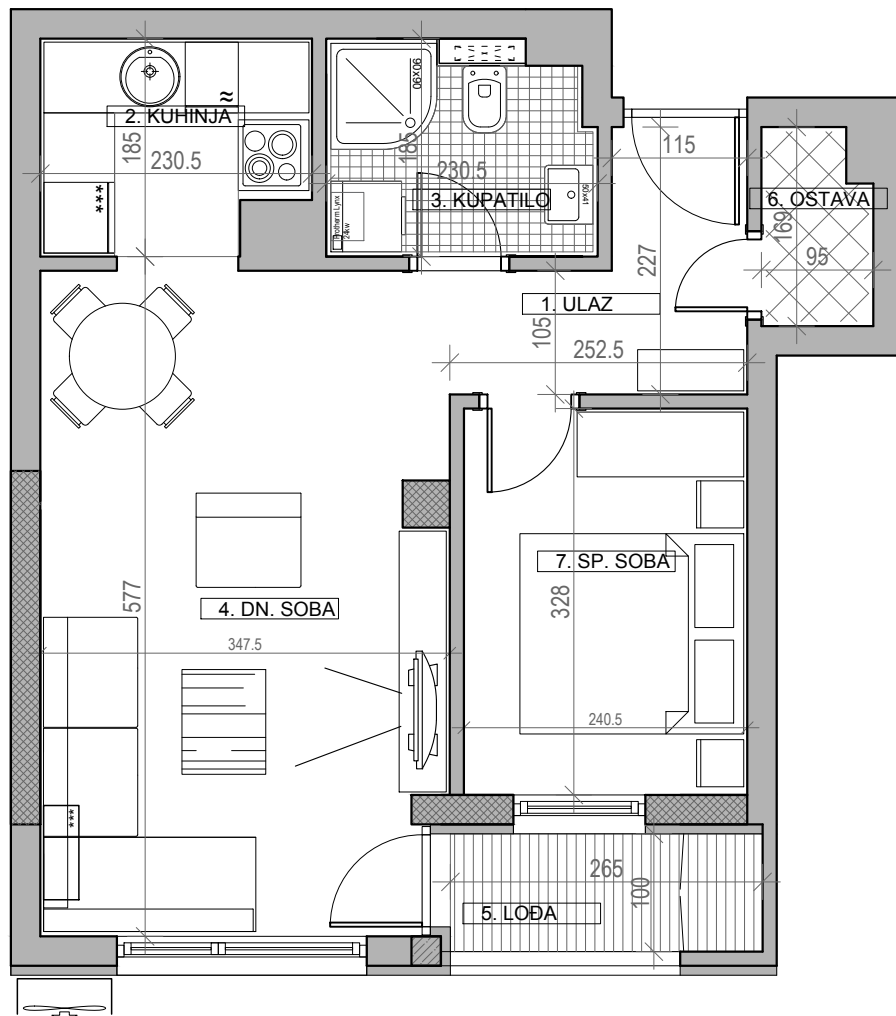


ULICA SVETOSAVSKA



osnova stana br. 31, ulaz broj 1

III SPRAT / **P=43.34 m²**

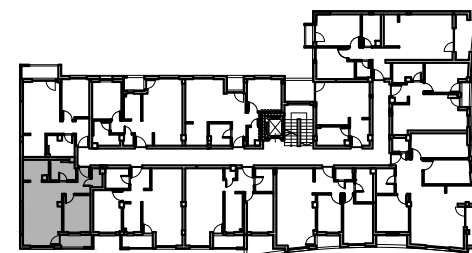


STAMBENA ZGRADA Su+P+4+Pk

Novi Banovci, ul. Svetosavska 2

kp 2390 / 141

| III SPRAT STAN BR. 31 | | |
|--------------------------|------------|----------------------------|
| br. | prostorija | površina/m ² |
| 1 | ULAZ | 4.05 |
| 2 | KUHINJA | 4.09 |
| 3 | KUPATILO | 4.05 |
| 4 | DN. SOBA | 19.12 |
| 5 | LOĐA | 2.65 |
| 6 | OSTAVA | 1.50 |
| 7 | SP. SOBA | 7.89 |
| UKUPNO | | 43.34 m² |
| | | -3% |
| | | 42.04 m² |

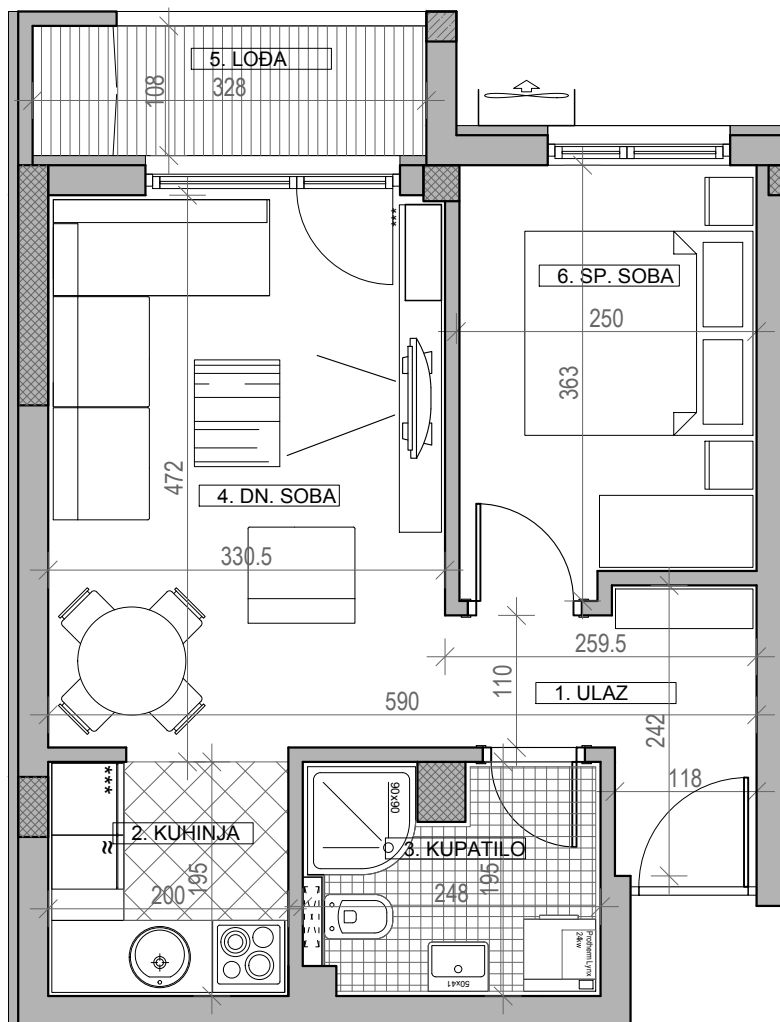


ULICA SVETOSAVSKA



osnova stana br. 32, ulaz broj 1

III SPRAT / **P=40.15 m²**



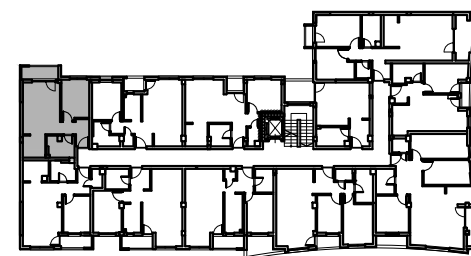
STAMBENA ZGRADA Su+P+4+Pk

Novi Banovci, ul. Svetosavska 2

kp 2390 / 141



| III SPRAT | | |
|---------------|------------|----------------------------|
| STAN BR. 32 | | |
| br. | prostorija | površina/m ² |
| 1 | ULAZ | 4.44 |
| 2 | KUHINJA | 3.90 |
| 3 | KUPATILO | 4.44 |
| 4 | DN. SOBA | 15.09 |
| 5 | LOĐA | 3.54 |
| 6 | SP. SOBA | 8.74 |
| UKUPNO | | 40.15 m² |
| -3% | | 38.95 m² |



ULICA SVETOSAVSKA



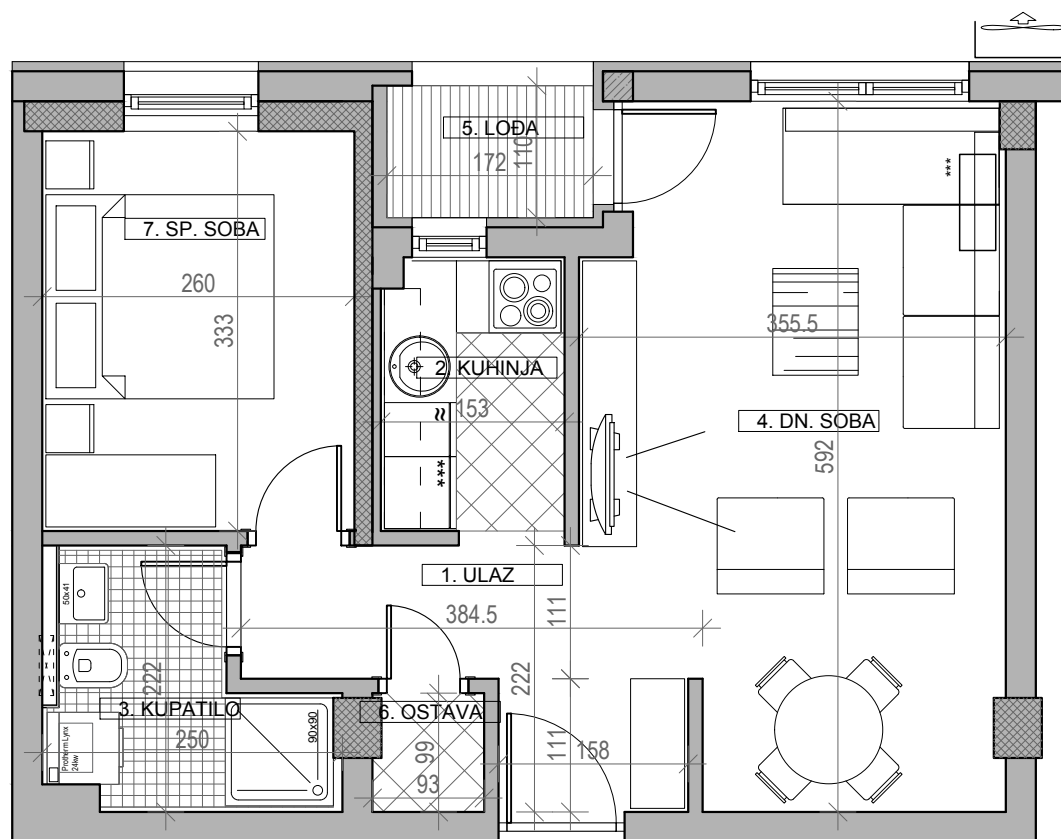
osnova stana br. 33, ulaz broj 1

III SPRAT / **P=43.17 m²**

STAMBENA ZGRADA Su+P+4+Pk

Novi Banovci, ul. Svetosavska 2

kp 2390 / 141



| III SPRAT | | |
|---------------|------------|----------------------------|
| STAN BR. 33 | | |
| br. | prostorija | površina/m ² |
| 1 | ULAZ | 4.87 |
| 2 | KUHINJA | 3.58 |
| 3 | KUPATILO | 4.17 |
| 4 | DN. SOBA | 19.21 |
| 5 | LOĐA | 1.89 |
| 6 | OSTAVA | 0.85 |
| 7 | SP. SOBA | 8.66 |
| UKUPNO | | 43.17 m² |
| | | -3% |
| | | 41.87 m² |



ULICA SVETOSAVSKA



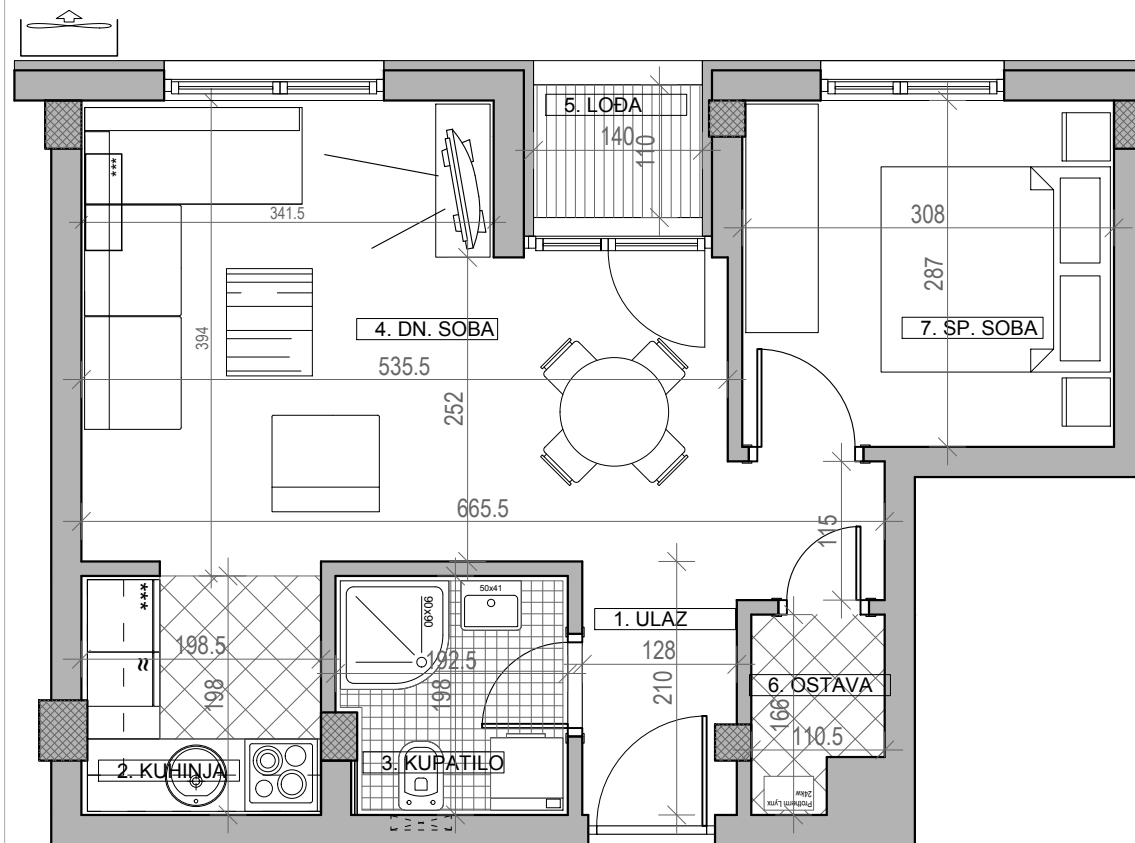
osnova stana br. 34, ulaz broj 1

III SPRAT / **P=41.81 m²**

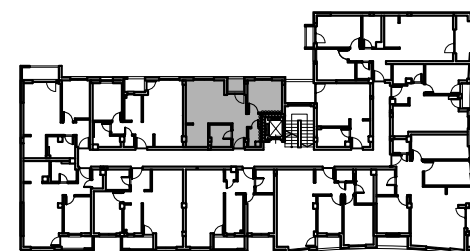
STAMBENA ZGRADA Su+P+4+Pk

Novi Banovci, ul. Svetosavska 2

kp 2390 / 141



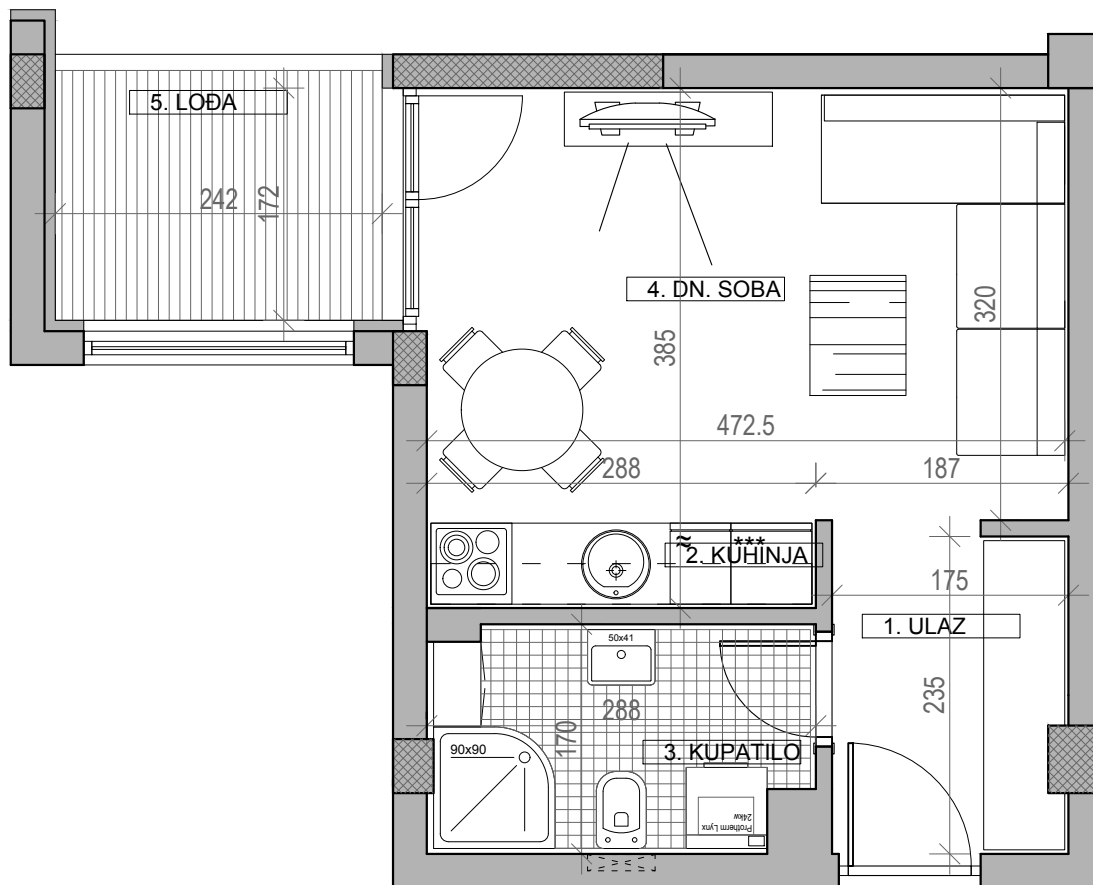
| III SPRAT | | |
|---------------|------------|----------------------------|
| STAN BR. 34 | | |
| br. | prostorija | površina/m ² |
| 1 | ULAZ | 4.52 |
| 2 | KUHINJA | 4.13 |
| 3 | KUPATILO | 3.66 |
| 4 | DN. SOBA | 17.52 |
| 5 | LOBA | 1.54 |
| 6 | OSTAVA | 1.60 |
| 7 | SP. SOBA | 8.84 |
| UKUPNO | | 41.81 m² |
| -3% | | 40.56 m² |



ULICA SVETOSAVSKA

osnova stana br. 35, ulaz broj 1

IV SPRAT / **P=30.23 m²**

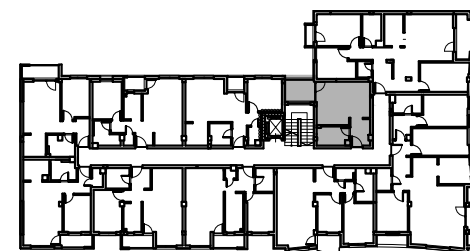


STAMBENA ZGRADA Su+P+4+Pk

Novi Banovci, ul. Svetosavska 2

kp 2390 / 141

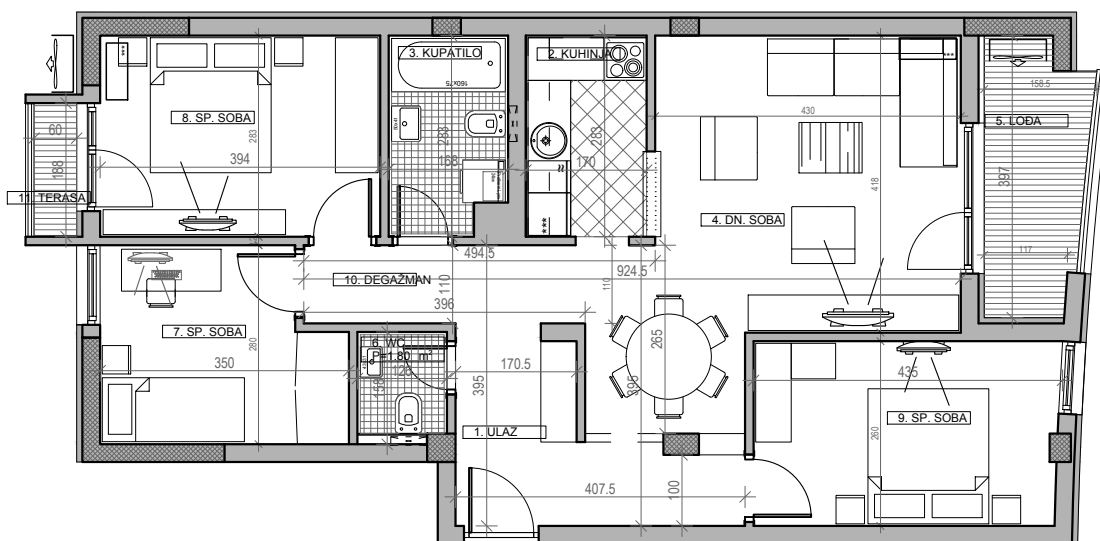
| IV SPRAT | | |
|---------------|------------|----------------------------|
| STAN BR. 35 | | |
| br. | prostorija | površina/m ² |
| 1 | ULAZ | 4.04 |
| 2 | KUHINJA | 1.84 |
| 3 | KUPATILO | 4.67 |
| 4 | DN. SOBA | 15.20 |
| 5 | LOĐA | 4.48 |
| UKUPNO | | 30.23 m² |
| | | -3% |
| | | 29.32 m² |



ULICA SVETOSAVSKA



osnova stana br. 36, ulaz broj 1

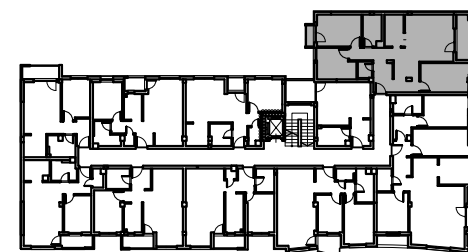
IV SPRAT / P=83.13 m²

STAMBENA ZGRADA Su+P+4+Pk

Novi Banovci, ul. Svetosavska 2

kp 2390 / 141

| IV SPRAT | | |
|---------------|------------|--------------------------------|
| STAN BR. 36 | | |
| br. | prostorija | površina/m ² |
| 1 | ULAZ | 7.43 |
| 2 | KUHINJA | 4.81 |
| 3 | KUPATILO | 4.52 |
| 4 | DN. SOBA | 24.38 |
| 5 | LODA | 5.72 |
| 6 | WC | 1.80 |
| 7 | SP. SOBA | 8.88 |
| 8 | SP. SOBA | 11.15 |
| 9 | SP. SOBA | 10.96 |
| 10 | DEGAŽMAN | 2.35 |
| 11 | TERASA | 1.13 |
| UKUPNO | | 83.13 m² |
| | | -3% 80.64 m² |

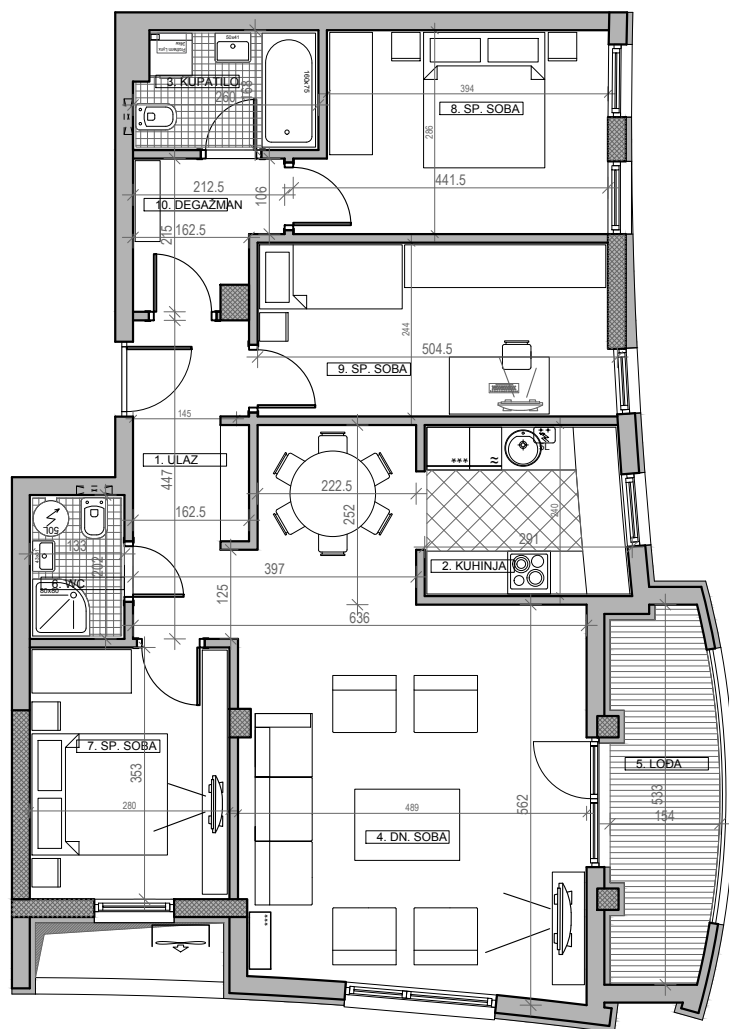


ULICA SVETOSAVSKA



osnova stana br. 37, ulaz broj 1

IV SPRAT / **P=97.48 m²**

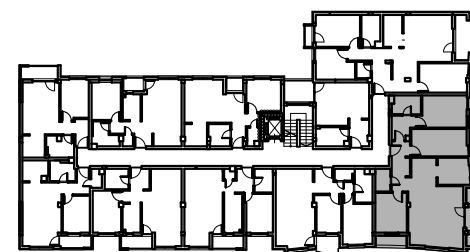


STAMBENA ZGRADA Su+P+4+Pk

Novi Banovci, ul. Svetosavska 2

kp 2390 / 141

| IV SPRAT STAN BR. 37 | | |
|-------------------------|------------|--------------------------------|
| br. | prostorija | površina/m ² |
| 1 | ULAZ | 5.02 |
| 2 | KUHINJA | 6.74 |
| 3 | KUPATILO | 4.20 |
| 4 | DN. SOBA | 33.95 |
| 5 | LOBA | 7.30 |
| 6 | WC | 2.68 |
| 7 | SP. SOBA | 9.89 |
| 8 | SP. SOBA | 11.77 |
| 9 | SP. SOBA | 12.05 |
| 10 | DEGAŽMAN | 3.88 |
| UKUPNO | | 97.48 m² |
| | | -3% 95.56 m² |



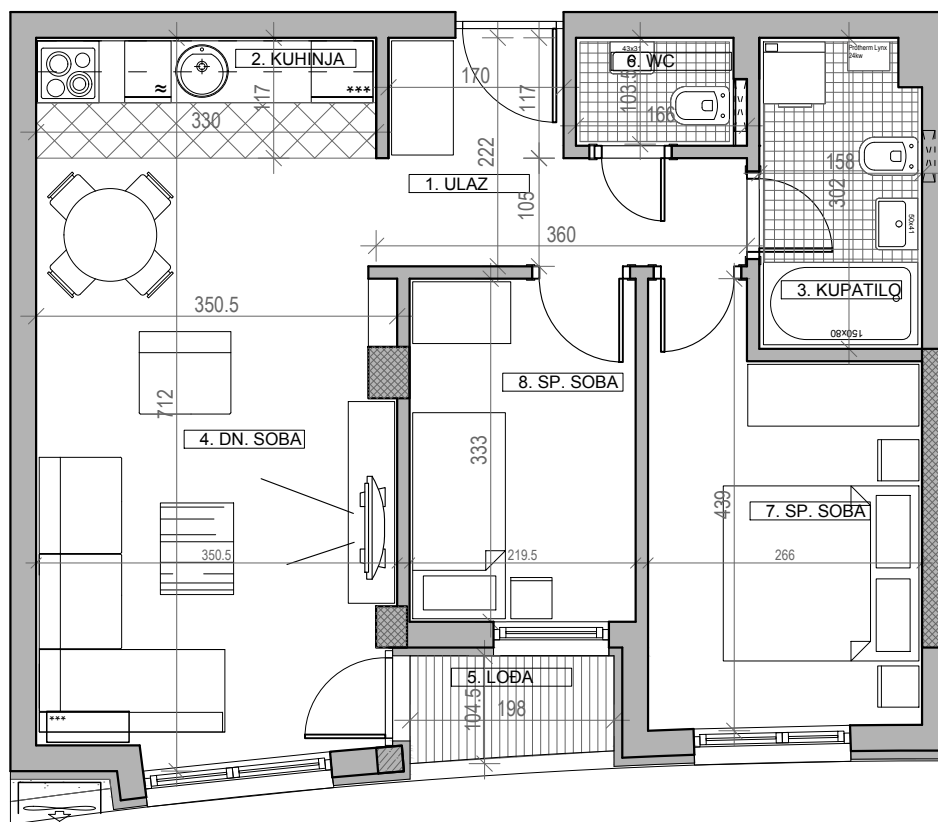
ULICA SVETOSAVSKA



osnova stana br. 38, ulaz broj 1
IV SPRAT / **P=55.82 m²**

STAMBENA ZGRADA Su+P+4+Pk

Novi Banovci, ul. Svetosavska 2
kp 2390 / 141



| IV SPRAT | | |
|---------------|------------|----------------------------|
| STAN BR. 38 | | |
| br. | prostorija | površina/m ² |
| 1 | ULAZ | 5.64 |
| 2 | KUHINJA | 3.86 |
| 3 | KUPATILO | 4.40 |
| 4 | DN. SOBA | 19.60 |
| 5 | LOĐA | 3.00 |
| 6 | WC | 1.60 |
| 7 | SP. SOBA | 10.27 |
| 8 | SP. SOBA | 7.45 |
| UKUPNO | | 55.82 m² |
| | | -3% |
| | | 54.15 m² |



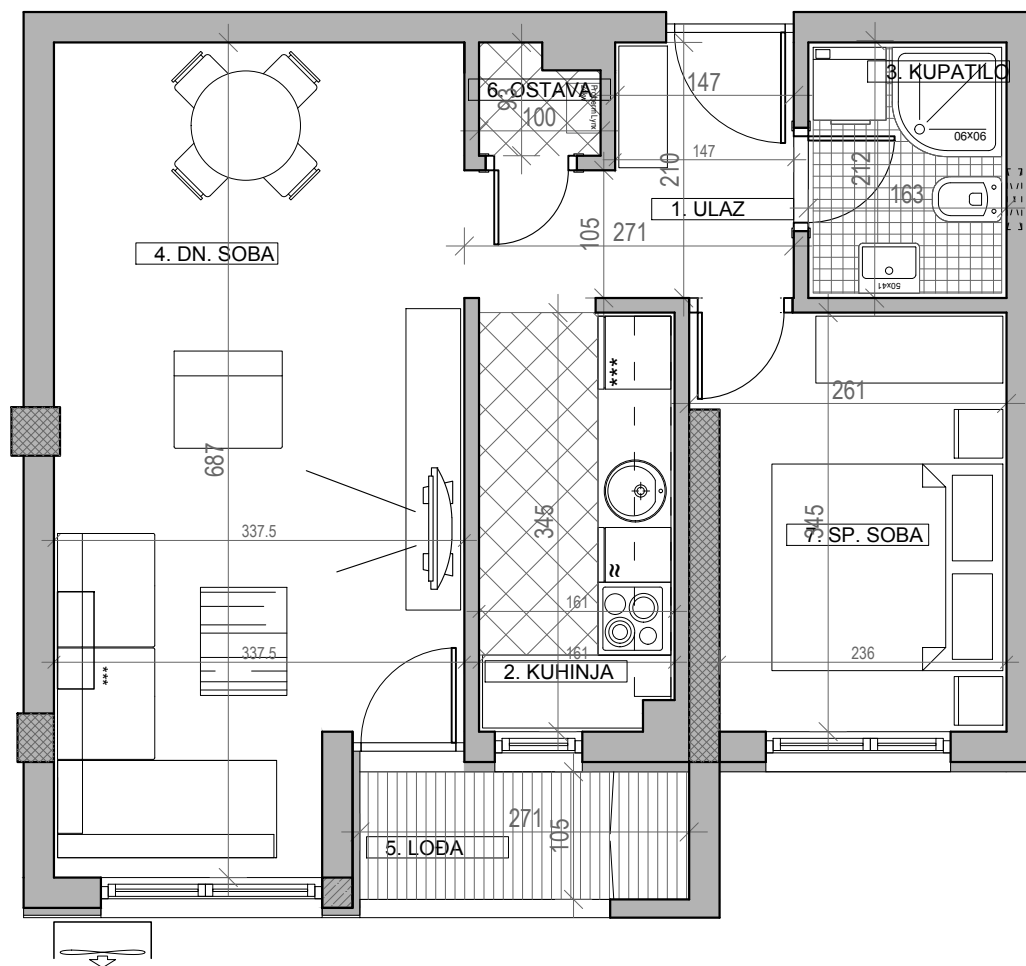
ULICA SVETOSAVSKA



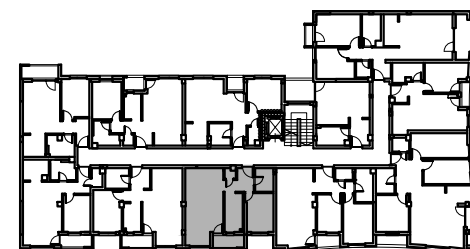
osnova stana br. 39, ulaz broj 1
IV SPRAT / **P=47.32 m²**

STAMBENA ZGRADA Su+P+4+Pk

Novi Banovci, ul. Svetosavska 2
kp 2390 / 141



| IV SPRAT STAN BR. 39 | | |
|-------------------------|------------|----------------------------|
| br. | prostorija | površina/m ² |
| 1 | ULAZ | 3.09 |
| 2 | KUHINJA | 5.48 |
| 3 | KUPATILO | 3.43 |
| 4 | DN. SOBA | 23.25 |
| 5 | LOĐA | 2.91 |
| 6 | OSTAVA | 0.82 |
| 7 | SP. SOBA | 8.34 |
| UKUPNO | | 47.32 m² |
| -3% | | 45.90 m² |



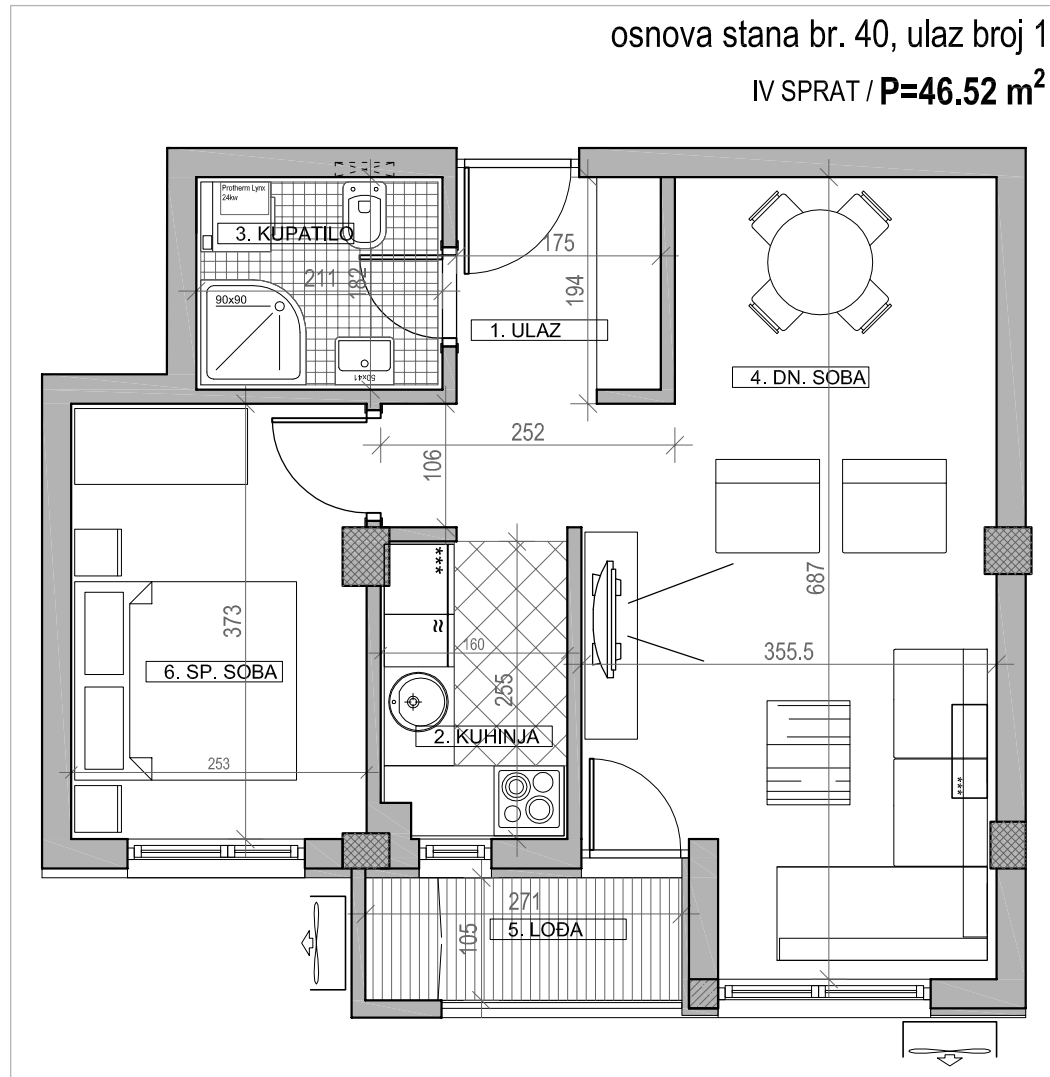
ULICA SVETOSAVSKA



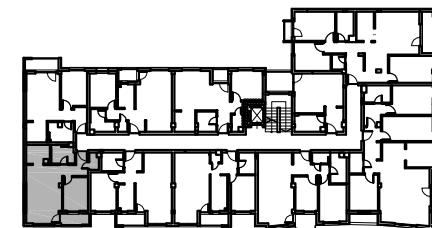
osnova stana br. 40, ulaz broj 1
IV SPRAT / **P=46.52 m²**

STAMBENA ZGRADA Su+P+4+Pk

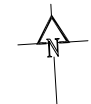
Novi Banovci, ul. Svetosavska 2
kp 2390 / 141



| IV SPRAT STAN BR. 40 | | |
|-------------------------|------------|----------------------------|
| br. | prostorija | površina/m ² |
| 1 | ULAZ | 5.11 |
| 2 | KUHNJA | 4.01 |
| 3 | KUPATILO | 3.84 |
| 4 | DN. SOBA | 21.30 |
| 5 | LOĐA | 2.91 |
| 6 | SP. SOBA | 9.35 |
| UKUPNO | | 46.52 m² |
| | | -3% |
| | | 45.12 m² |

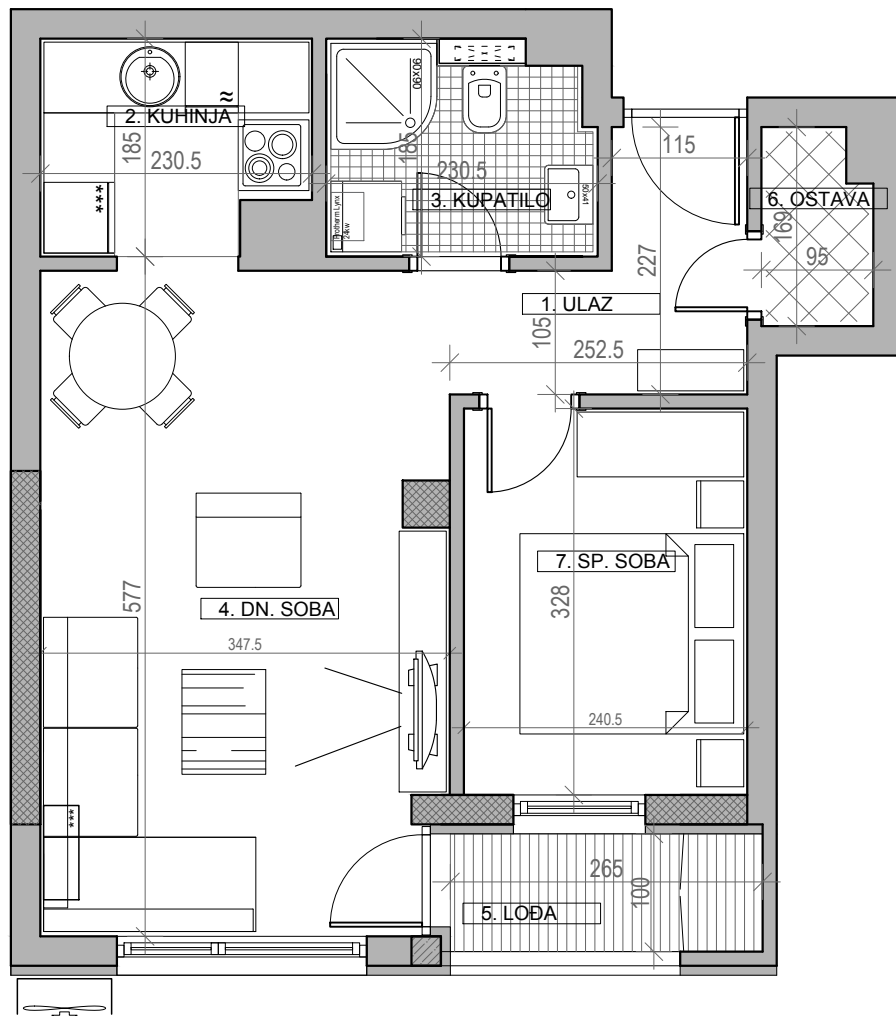


ULICA SVETOSAVSKA



osnova stana br. 41, ulaz broj 1

IV SPRAT / **P=43.34 m²**

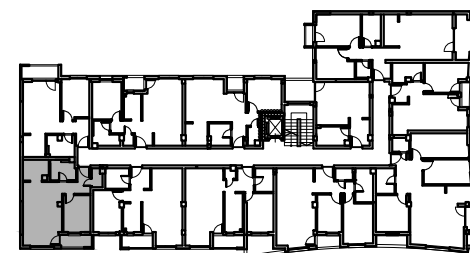


STAMBENA ZGRADA Su+P+4+Pk

Novi Banovci, ul. Svetosavska 2

kp 2390 / 141

| IV SPRAT | | |
|---------------|------------|----------------------------|
| STAN BR. 41 | | |
| br. | prostorija | površina/m ² |
| 1 | ULAZ | 4.04 |
| 2 | KUHINJA | 4.09 |
| 3 | KUPATILO | 4.05 |
| 4 | DN. SOBA | 19.12 |
| 5 | LOBA | 2.65 |
| 6 | OSTAVA | 1.50 |
| 7 | SP. SOBA | 7.89 |
| UKUPNO | | 43.34 m² |
| -3% | | 42.04 m² |



ULICA SVETOSAVSKA

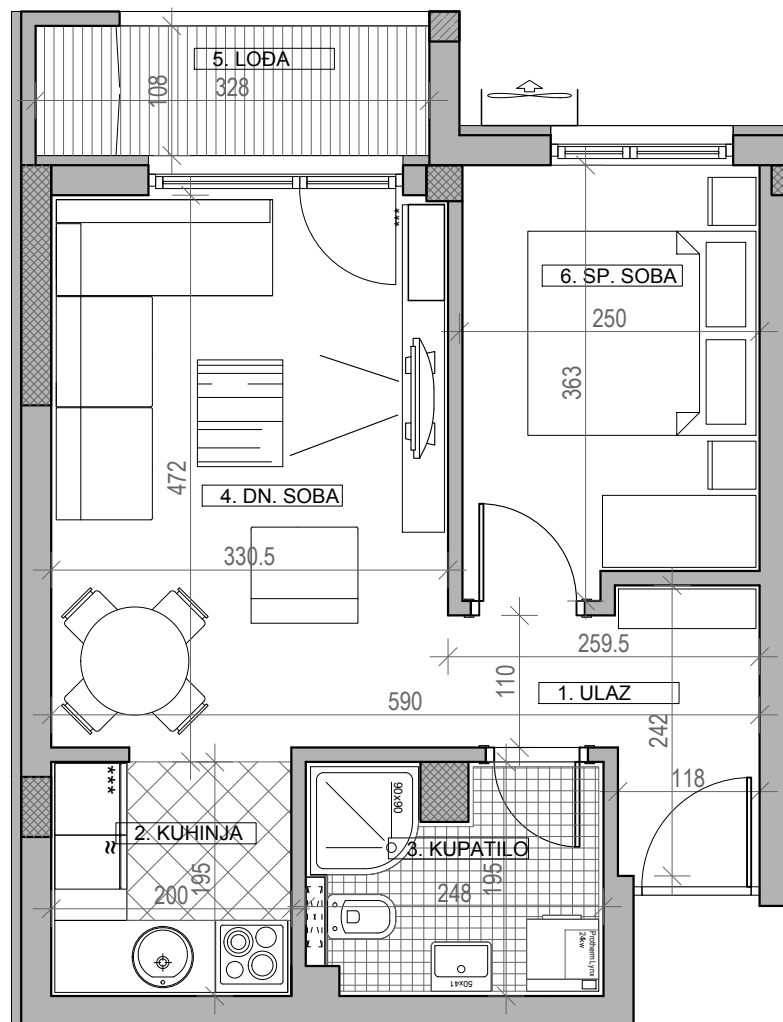


osnova stana br. 42, ulaz broj 1
IV SPRAT / **P=40.15 m²**

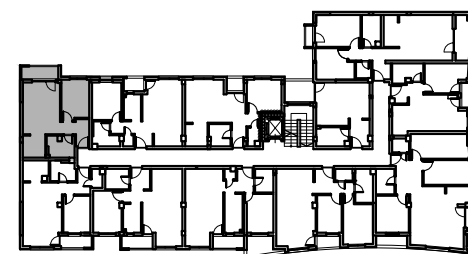
STAMBENA ZGRADA Su+P+4+Pk

Novi Banovci, ul. Svetosavska 2

kp 2390 / 141



| IV SPRAT | | |
|---------------|------------|----------------------------|
| STAN BR. 42 | | |
| br. | prostorija | površina/m ² |
| 1 | ULAZ | 4.44 |
| 2 | KUHINJA | 3.90 |
| 3 | KUPATILO | 4.44 |
| 4 | DN. SOBA | 15.09 |
| 5 | LOĐA | 3.54 |
| 6 | SP. SOBA | 8.74 |
| UKUPNO | | 40.15 m² |
| | | -3% |
| | | 38.95 m² |



ULICA SVETOSAVSKA



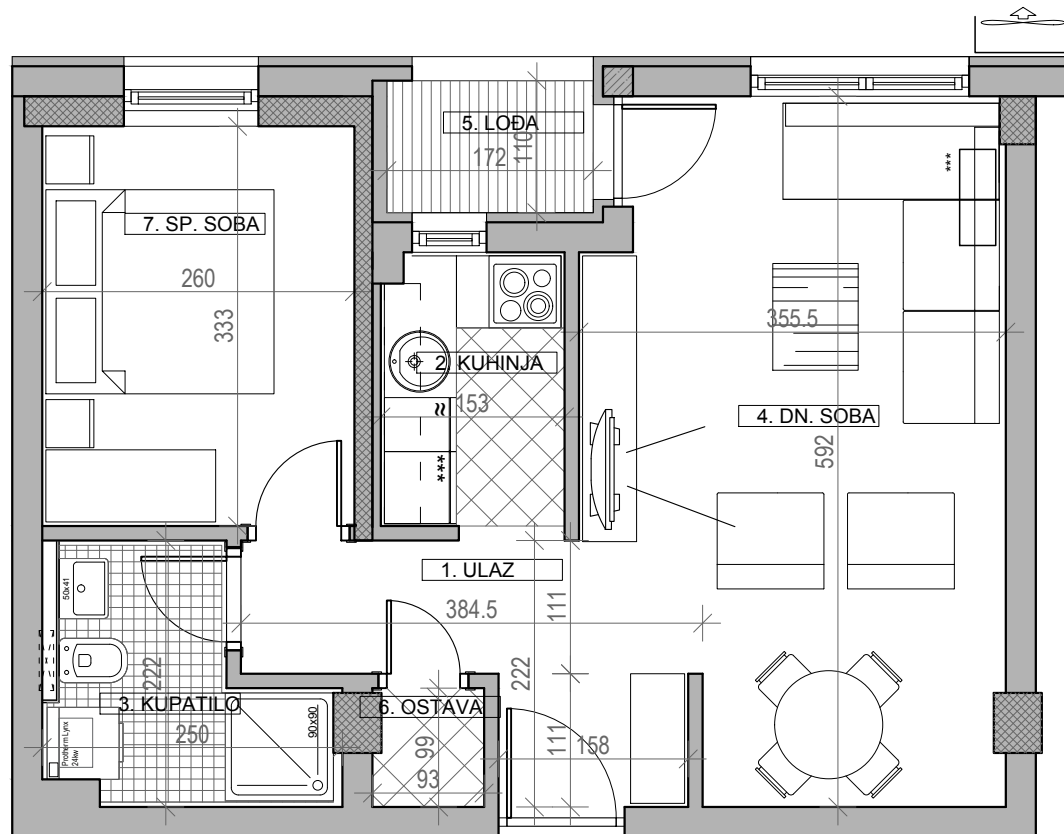
osnova stana br. 43, ulaz broj 1

IV SPRAT / **P=43.17 m²**

STAMBENA ZGRADA Su+P+4+Pk

Novi Banovci, ul. Svetosavska 2

kp 2390 / 141



| IV SPRAT STAN BR. 43 | | |
|-------------------------|------------|----------------------------|
| br. | prostorija | površina/m ² |
| 1 | ULAZ | 4.87 |
| 2 | KUHINJA | 3.58 |
| 3 | KUPATILO | 4.17 |
| 4 | DN. SOBA | 19.15 |
| 5 | LOĐA | 1.89 |
| 6 | OSTAVA | 0.85 |
| 7 | SP. SOBA | 8.66 |
| UKUPNO | | 43.17 m² |
| | | -3% |
| | | 41.87 m² |



ULICA SVETOSAVSKA



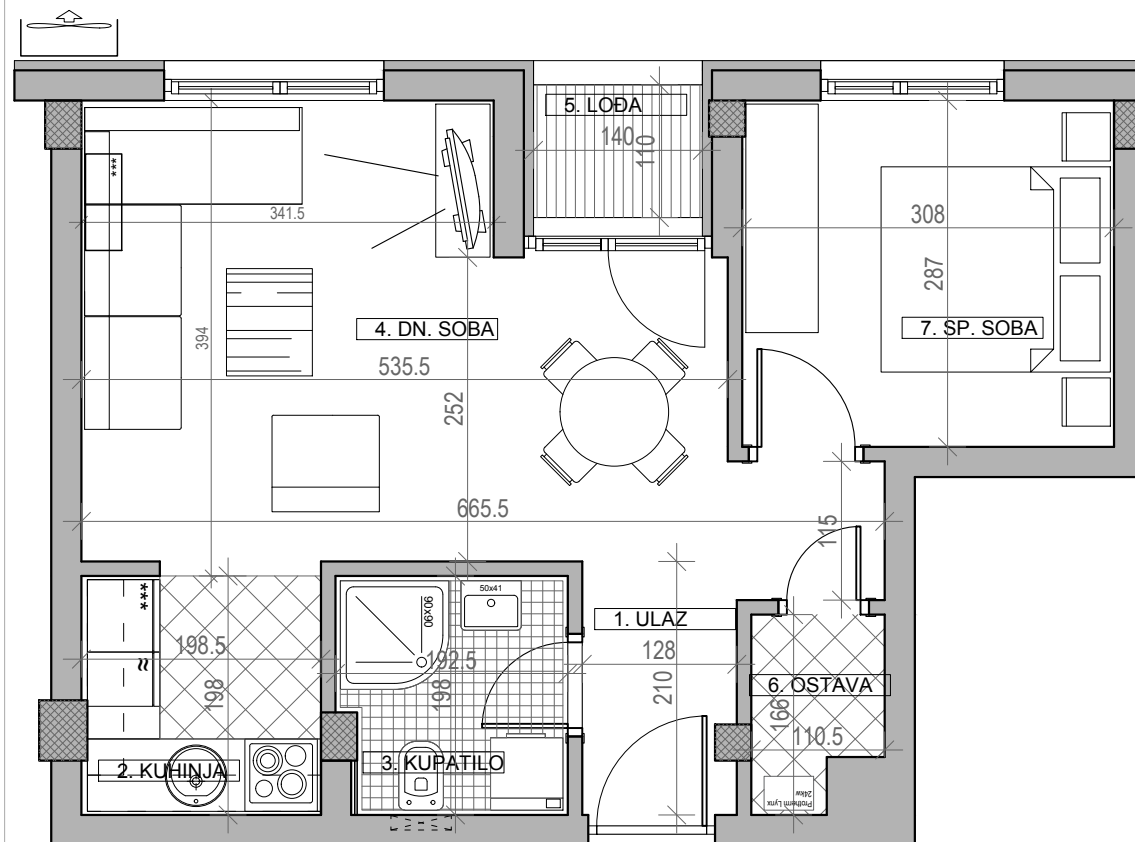
osnova stana br. 44, ulaz broj 1

IV SPRAT / **P=41.81 m²**

STAMBENA ZGRADA Su+P+4+Pk

Novi Banovci, ul. Svetosavska 2

kp 2390 / 141



| IV SPRAT | | |
|---------------|------------|----------------------------|
| STAN BR. 44 | | |
| br. | prostorija | površina/m ² |
| 1 | ULAZ | 4.52 |
| 2 | KUHINJA | 4.13 |
| 3 | KUPATILO | 3.66 |
| 4 | DN. SOBA | 17.52 |
| 5 | LOĐA | 1.54 |
| 6 | OSTAVA | 1.60 |
| 7 | SP. SOBA | 8.84 |
| UKUPNO | | 41.81 m² |
| | | -3% |
| | | 40.56 m² |



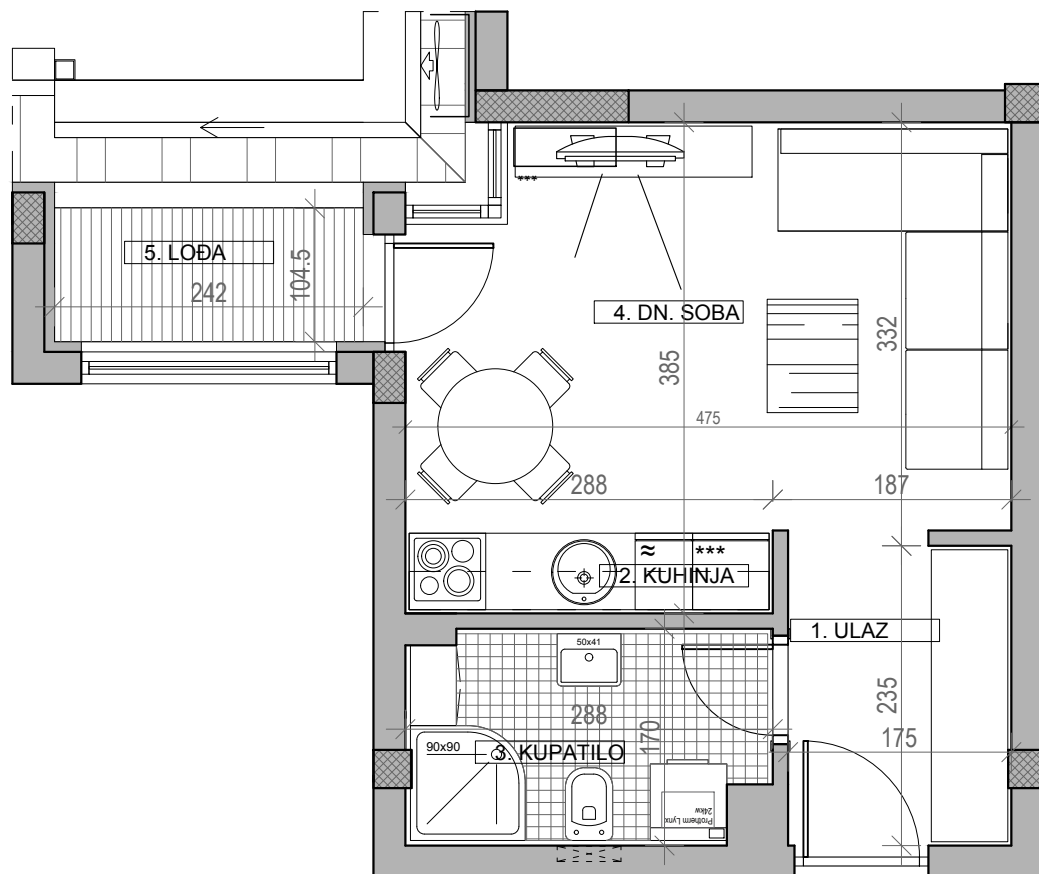
ULICA SVETOSAVSKA



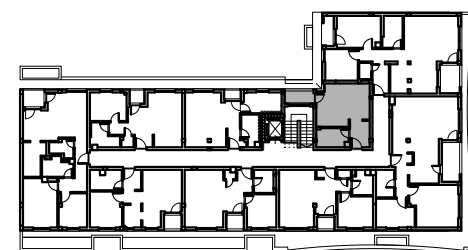
osnova stana br. 45, ulaz broj 1
 POTKROVLJE / **P=27.72 m²**

STAMBENA ZGRADA Su+P+4+Pk

Novi Banovci, ul. Svetosavska 2
 kp 2390 / 141



| POTKROVLJE | | |
|---------------|------------|----------------------------|
| STAN BR. 45 | | |
| br. | prostorija | površina/m ² |
| 1 | ULAZ | 4.11 |
| 2 | KUHINJA | 1.84 |
| 3 | KUPATILO | 4.67 |
| 4 | DN. SOBA | 14.56 |
| 5 | LOĐA | 2.54 |
| UKUPNO | | 27.72 m² |
| -3% | | 26.89 m² |



ULICA SVETOSAVSKA

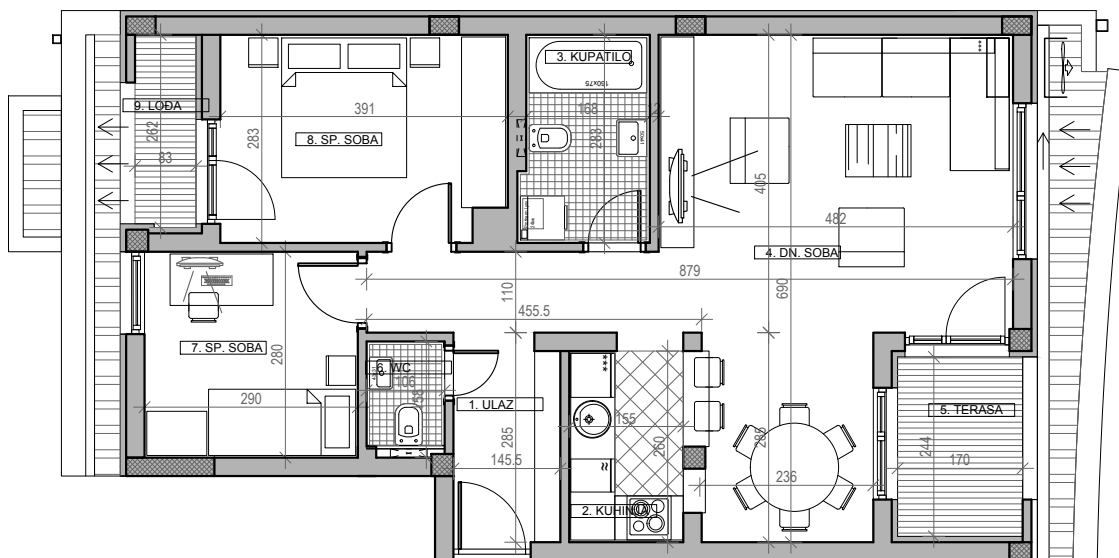


osnova stana br. 46, ulaz broj 1
POTKROVLJE / P=70.88 m²

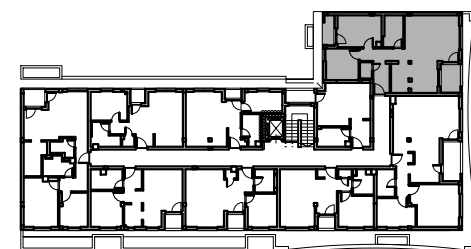
STAMBENA ZGRADA Su+P+4+Pk

Novi Banovci, ul. Svetosavska 2

kp 2390 / 141



| P O T K R O V L J E | | |
|---------------------|------------|----------------------------|
| S T A N B R . 4 6 | | |
| br. | prostorija | površina/m ² |
| 1 | ULAZ | 7.04 |
| 2 | KUHINJA | 4.03 |
| 3 | KUPATILO | 4.87 |
| 4 | DN. SOBA | 28.16 |
| 5 | TERASA | 4.15 |
| 6 | WC | 1.50 |
| 7 | SP. SOBA | 8.12 |
| 8 | SP. SOBA | 10.84 |
| 9 | LOĐA | 2.17 |
| UKUPNO | | 70.88 m² |
| -3% | | 68.75 m² |

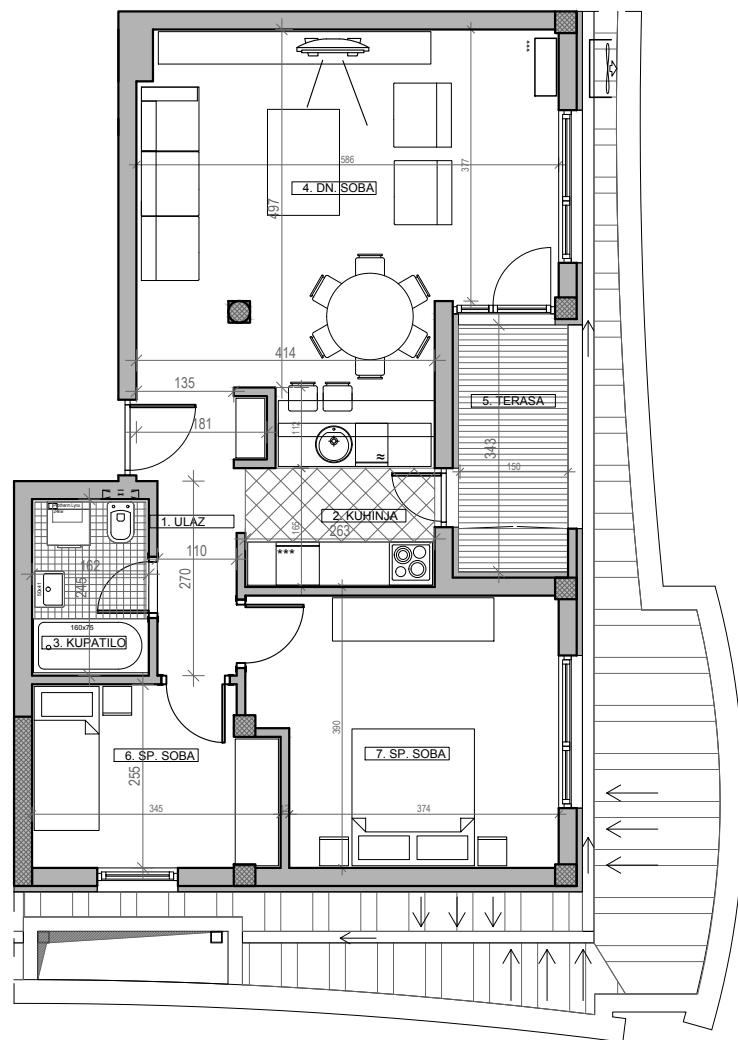


ULICA SVETOSAVSKA



osnova stana br. 47, ulaz broj 1

POTKROVLJE / **P=71.52 m²**



STAMBENA ZGRADA Su+P+4+Pk

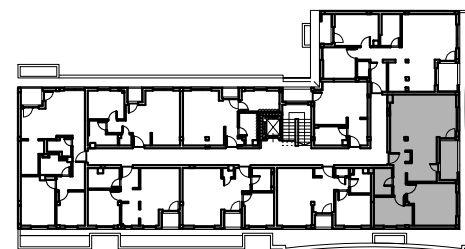
Novi Banovci, ul. Svetosavska 2

kp 2390 / 141



POTKROVLJE
STAN BR. 47

| br. | prostorija | površina/m ² |
|---------------|------------|----------------------------|
| 1 | ULAZ | 5.10 |
| 2 | KUHINJA | 6.79 |
| 3 | KUPATILO | 3.97 |
| 4 | DN. SOBA | 26.90 |
| 5 | TERASA | 5.21 |
| 6 | SP. SOBA | 8.32 |
| 7 | SP. SOBA | 15.23 |
| UKUPNO | | 71.52 m² |
| | | -3% |
| | | 69.37 m² |



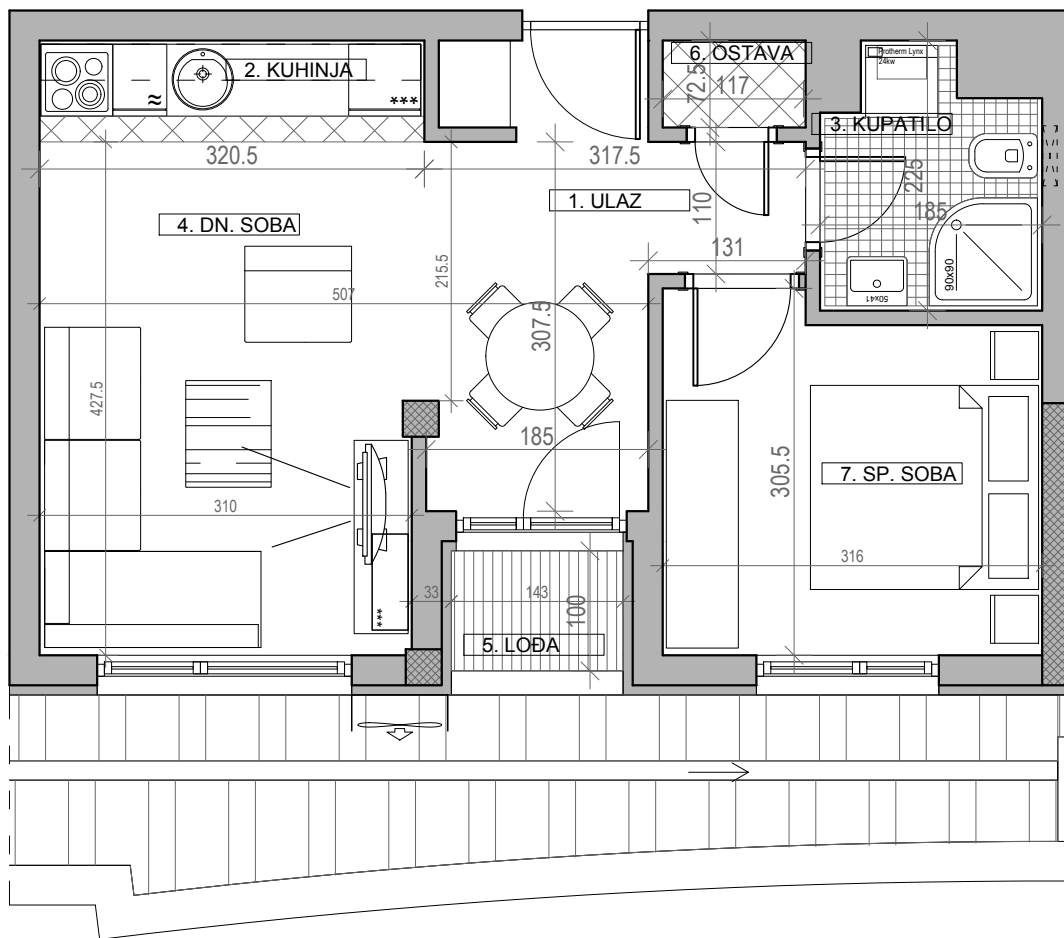
ULICA SVETOSAVSKA



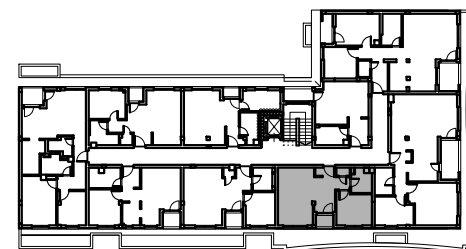
osnova stana br. 48, ulaz broj 1
POTKROVLJE / **P=39.60 m²**

STAMBENA ZGRADA Su+P+4+Pk

Novi Banovci, ul. Svetosavska 2
kp 2390 / 141



| POTKROVLJE | | |
|---------------|------------|----------------------------|
| STAN BR. 48 | | |
| br. | prostorija | površina/m ² |
| 1 | ULAZ | 3.44 |
| 2 | KUHINJA | 2.67 |
| 3 | KUPATILO | 3.62 |
| 4 | DN. SOBA | 18.53 |
| 5 | LOĀA | 1.43 |
| 6 | OSTAVA | 0.86 |
| 7 | SP. SOBA | 9.05 |
| UKUPNO | | 39.60 m² |
| | | -3% |
| | | 38.41 m² |



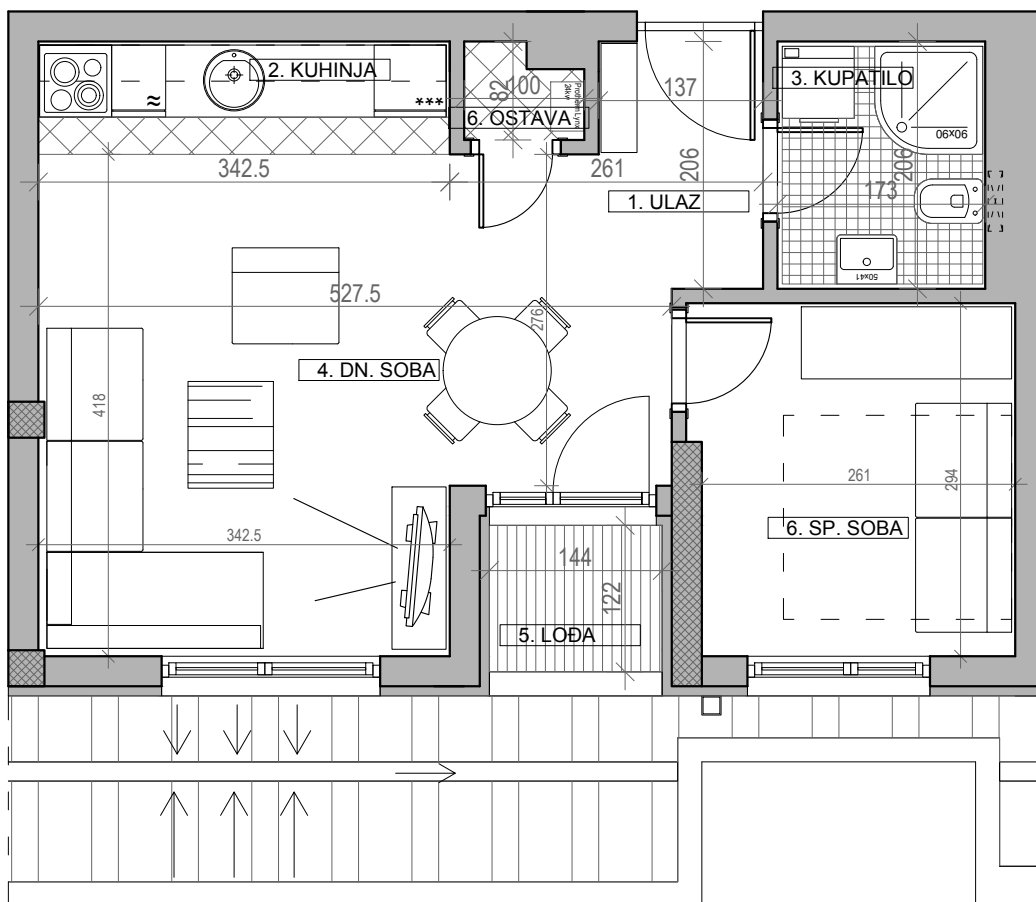
ULICA SVETOSAVSKA



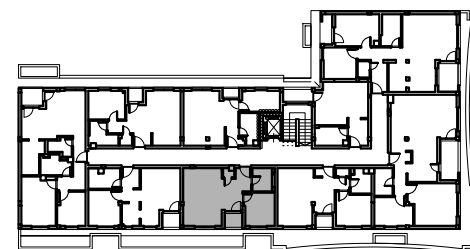
osnova stana br. 49, ulaz broj 1
 POTKROVLJE / **P=38.59 m²**

STAMBENA ZGRADA Su+P+4+Pk

Novi Banovci, ul. Svetosavska 2
 kp 2390 / 141



| POTKROVLJE STAN BR. 49 | | |
|---------------------------|------------|----------------------------|
| br. | prostorija | površina/m ² |
| 1 | ULAZ | 2.48 |
| 2 | KUHINJA | 3.19 |
| 3 | KUPATILO | 3.56 |
| 4 | DN. SOBA | 19.07 |
| 5 | LOĐA | 1.76 |
| 6 | OSTAVA | 0.71 |
| 7 | SP. SOBA | 7.82 |
| UKUPNO | | 38.59 m² |
| -3% | | 37.43 m² |



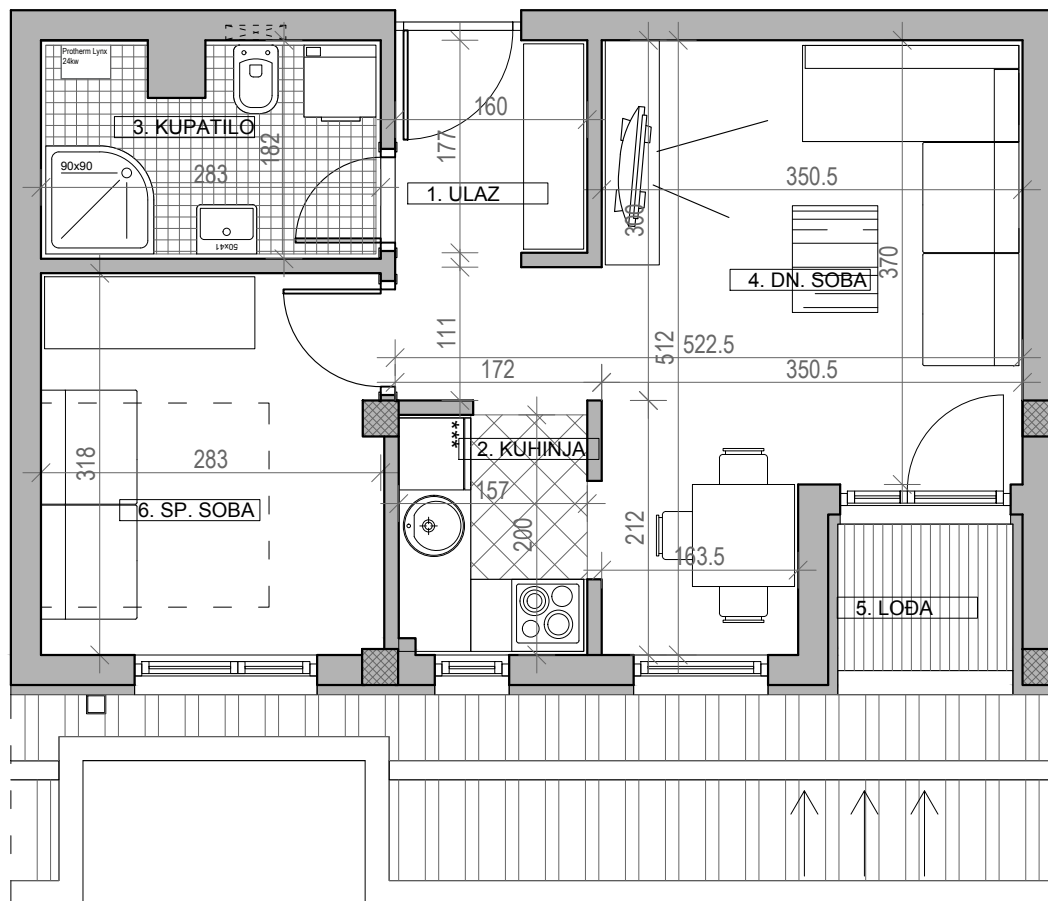
ULICA SVETOSAVSKA



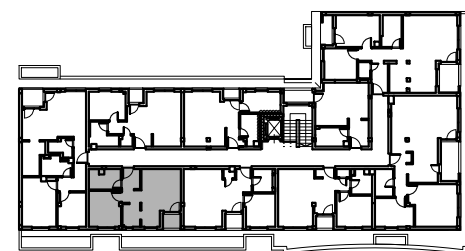
osnova stana br. 50, ulaz broj 1
 POTKROVLJE / **P=38.86 m²**

STAMBENA ZGRADA Su+P+4+Pk

Novi Banovci, ul. Svetosavska 2
 kp 2390 / 141



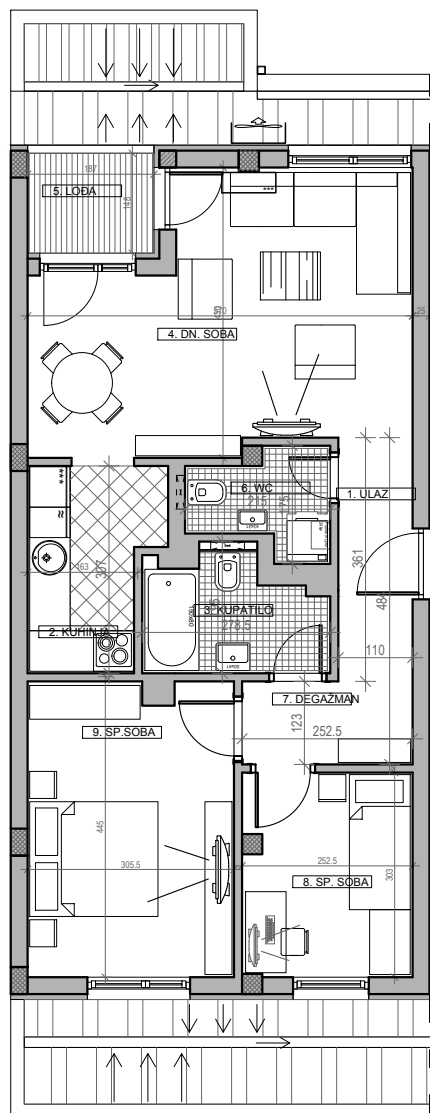
| POTKROVLJE STAN BR. 50 | | |
|---------------------------|------------|----------------------------|
| br. | prostorija | površina/m ² |
| 1 | ULAZ | 2.83 |
| 2 | KUHINJA | 3.12 |
| 3 | KUPATILO | 4.92 |
| 4 | DN. SOBA | 17.20 |
| 5 | LOĐA | 1.78 |
| 6 | SP. SOBA | 9.01 |
| UKUPNO | | 38.86 m² |
| | | -3% |
| | | 37.69 m² |



ULICA SVETOSAVSKA



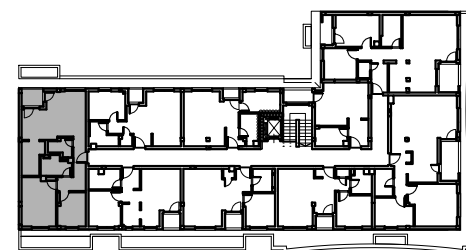
osnova stana br. 51, ulaz broj 1
 POTKROVLJE / **P=63.47 m²**



STAMBENA ZGRADA Su+P+4+Pk

Novi Banovci, ul. Svetosavska 2
 kp 2390 / 141

| POTKROVLJE STAN BR. 51 | | |
|---------------------------|------------|----------------------------|
| br. | prostorija | površina/m ² |
| 1 | ULAZ | 3.95 |
| 2 | KUHINJA | 5.44 |
| 3 | KUPATILO | 4.38 |
| 4 | DN. SOBA | 20.23 |
| 5 | LOBA | 2.77 |
| 6 | WC | 2.82 |
| 7 | DEGAŽMAN | 3.11 |
| 8 | SP. SOBA | 7.56 |
| 9 | SP. SOBA | 13.21 |
| UKUPNO | | 63.47 m² |
| | | -3% |
| | | 61.57 m² |



ULICA SVETOSAVSKA

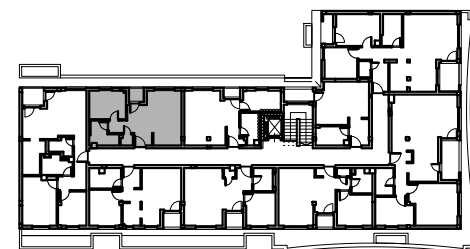
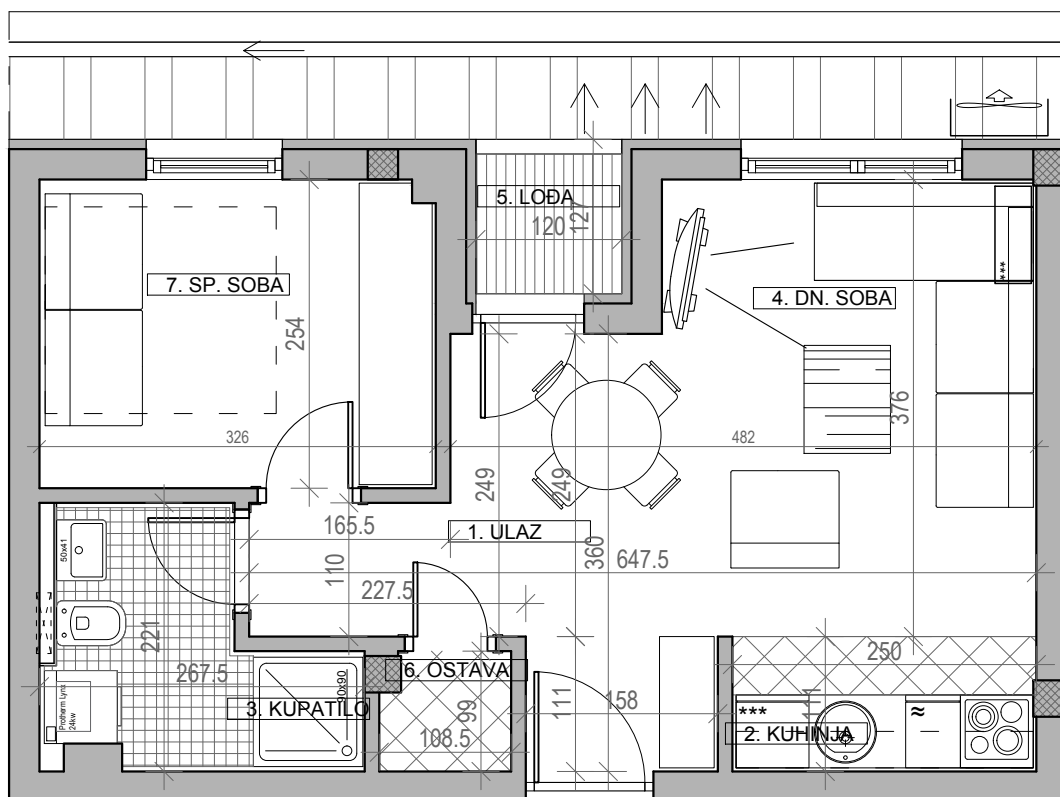


osnova stana br. 52, ulaz broj 1
 POTKROVLJE / **P=37.28 m²**

STAMBENA ZGRADA Su+P+4+Pk

Novi Banovci, ul. Svetosavska 2
 kp 2390 / 141

| POTKROVLJE STAN BR. 52 | | |
|---------------------------|------------|----------------------------|
| br. | prostorija | površina/m ² |
| 1 | ULAZ | 5.04 |
| 2 | KUHINJA | 2.93 |
| 3 | KUPATILO | 4.45 |
| 4 | DN. SOBA | 14.23 |
| 5 | LOBA | 1.38 |
| 6 | OSTAVA | 1.01 |
| 7 | SP. SOBA | 8.24 |
| UKUPNO | | 37.28 m² |
| -3% | | 36.16 m² |



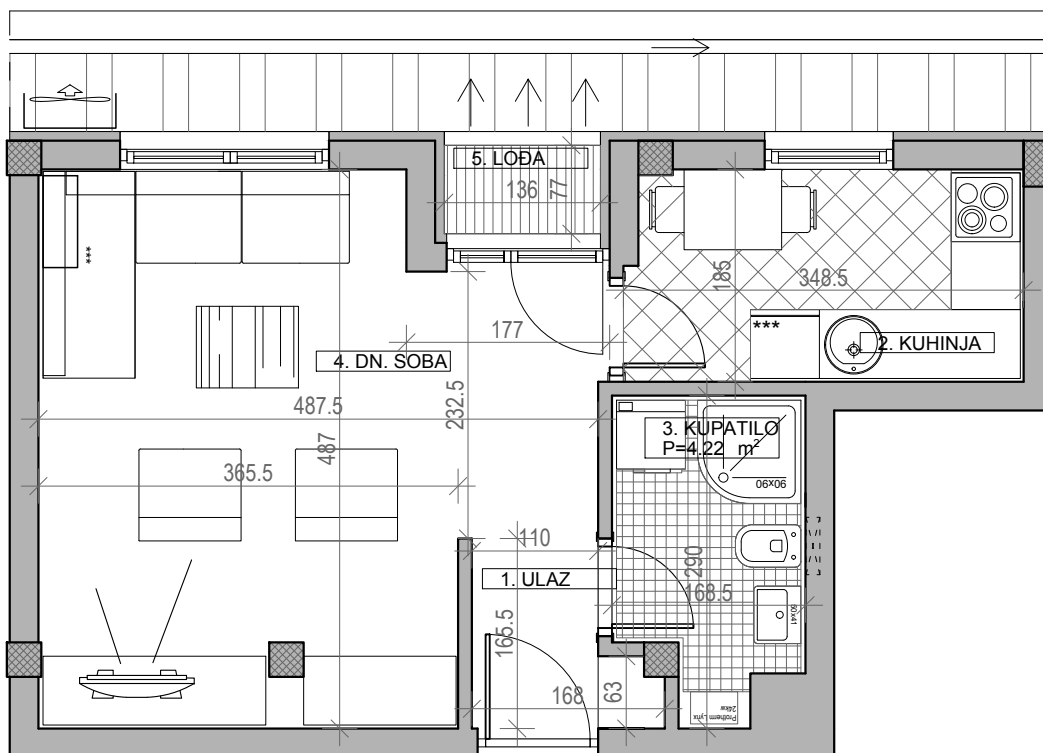
ULICA SVETOSAVSKA



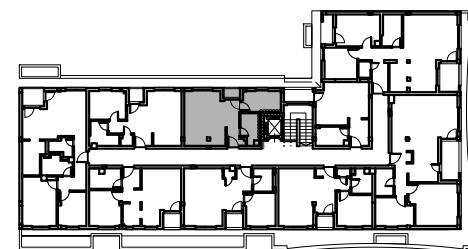
osnova stana br. 53, ulaz broj 1
 POTKROVLJE / **P=33.96 m²**

STAMBENA ZGRADA Su+P+4+Pk

Novi Banovci, ul. Svetosavska 2
 kp 2390 / 141



| P O T K R O V L J E | | |
|---------------------|------------|----------------------------|
| S T A N B R . 5 3 | | |
| br. | prostorija | površina/m ² |
| 1 | ULAZ | 2.15 |
| 2 | KUHINJA | 6.34 |
| 3 | KUPATILO | 4.22 |
| 4 | DN. SOBA | 20.09 |
| 5 | LOĐA | 1.16 |
| UKUPNO | | 33.96 m² |
| | | -3% |
| | | 32.94 m² |



ULICA SVETOSAVSKA

